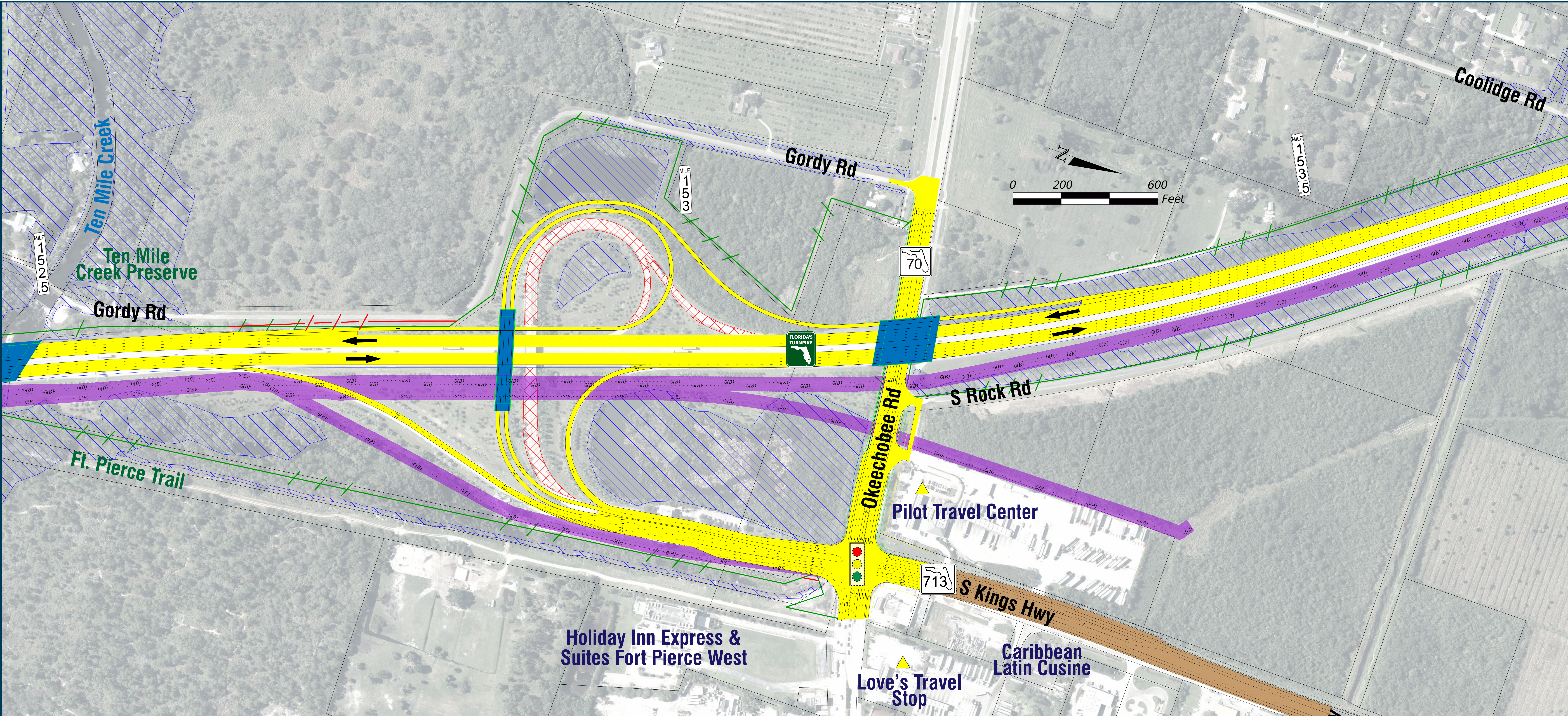
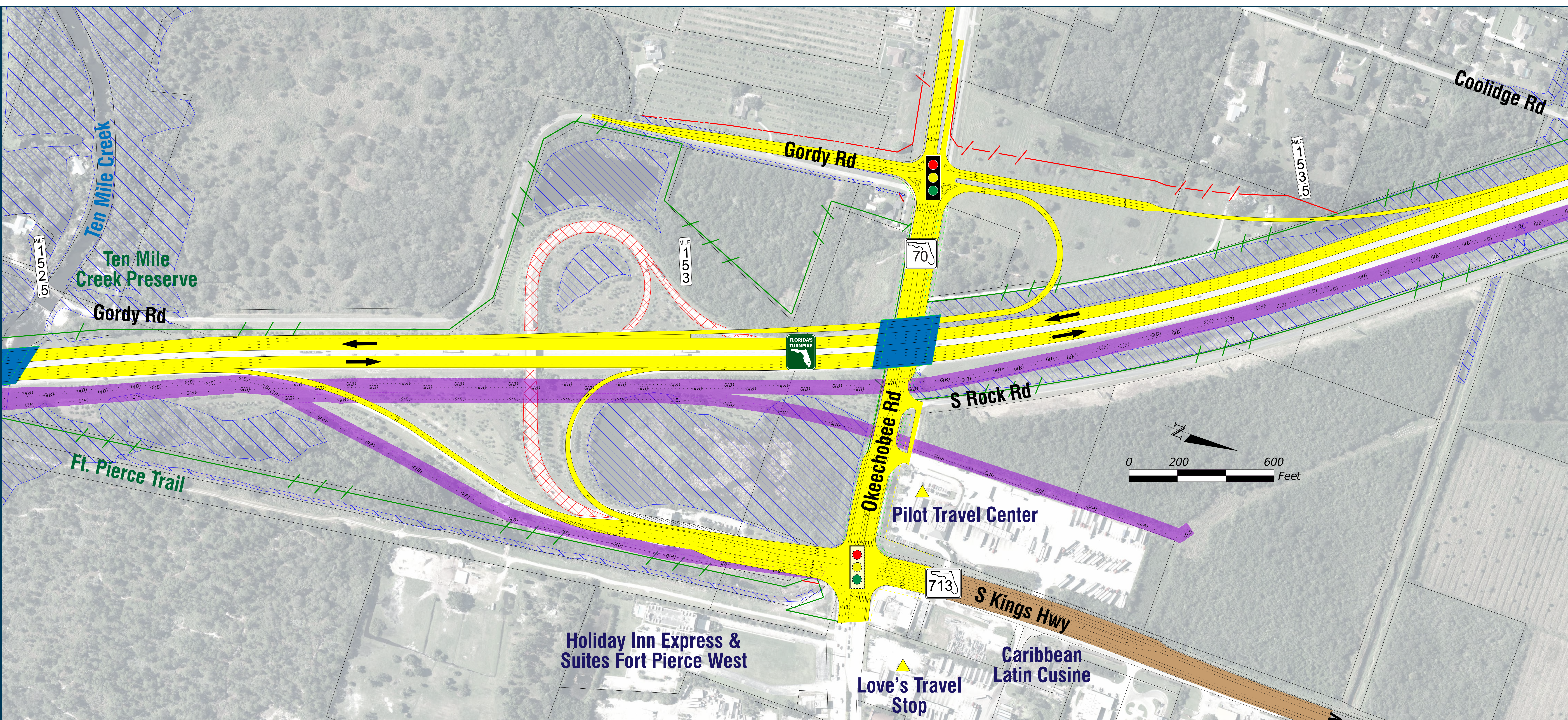


**Alternative A**



**Alternative B**



**MATRIX CHART**

OKEECHOBEE ROAD/SR 70 (EXIT 152)			
EVALUATION PARAMETERS	NO-BUILD	ALTERNATIVE A	ALTERNATIVE B
<b>ENGINEERING</b>	Traffic Operation Issues (Year 2045)	Major	Minor
	Construction Complexity	None/No Change	Minor
	Impacts to Local Road/Traffic Patterns	None/No Change	Minor
<b>ENVIRONMENTAL &amp; COMMUNITY</b>	Floodplain Impact (ac)	Minimal to None	Minimal to None
	Wetland Impact (ac)	1.0	1.2
	Estimated Residential & Business Relocations	None	± 1 (Residential)
	Other Issues	None/No Change	An Extra Bridge Over Turnpike FGT Involvement
<b>COST</b>	Estimated Cost (Excludes Utility Cost)	Construction = \$28,300,000 Right of Way = \$300,000 Total = \$28,600,000	Construction = \$28,200,000 Right of Way = \$6,700,000 Total = \$34,900,000

**Legend**

None/No Change	Moderate
Minor/Minimal to None	Major

**LEGEND**

NOTE: ROW = RIGHT OF WAY

- PROPERTY LINES
- EXISTING ROW LINE
- EXISTING LIMITED ACCESS ROW LINE
- POTENTIAL ROW LINE
- POTENTIAL LIMITED ACCESS ROW LINE
- RAILROAD
- PROPOSED ROADWAY
- PROPOSED BRIDGE
- EXISTING BRIDGE
- OTHER PROJECTS (BRIDGE)
- OTHER PROJECTS (ROADS)
- WETLANDS/OTHER SURFACE WATERS
- PAVEMENT REMOVAL
- POTENTIAL NEW TRAFFIC SIGNAL
- EXISTING TRAFFIC SIGNAL
- FLORIDA GAS TRANSMISSION (FGT) SPECIFIED WIDTH
- FUTURE TOLL GANTRY
- POTENTIAL MEDIUM/HIGH CONTAMINATION SITES

**Aerial Flight Date: December 2017 - March 2018**