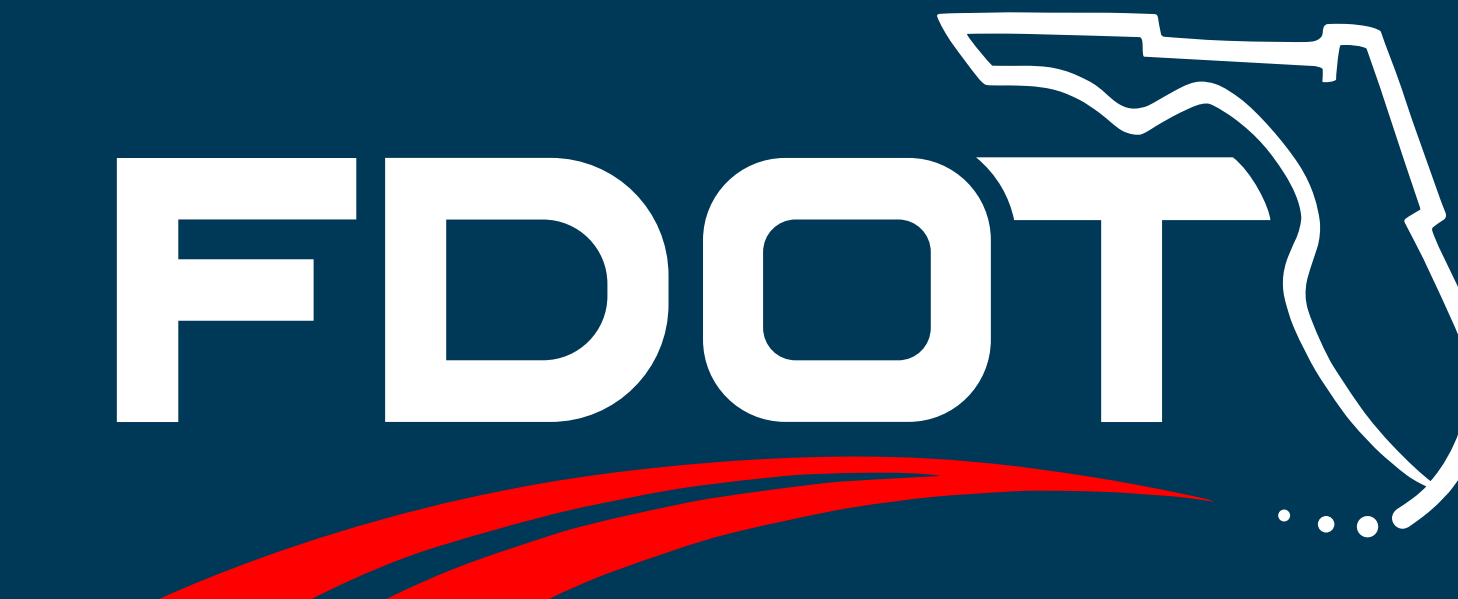




Port St. Lucie Boulevard Interchange Alternatives



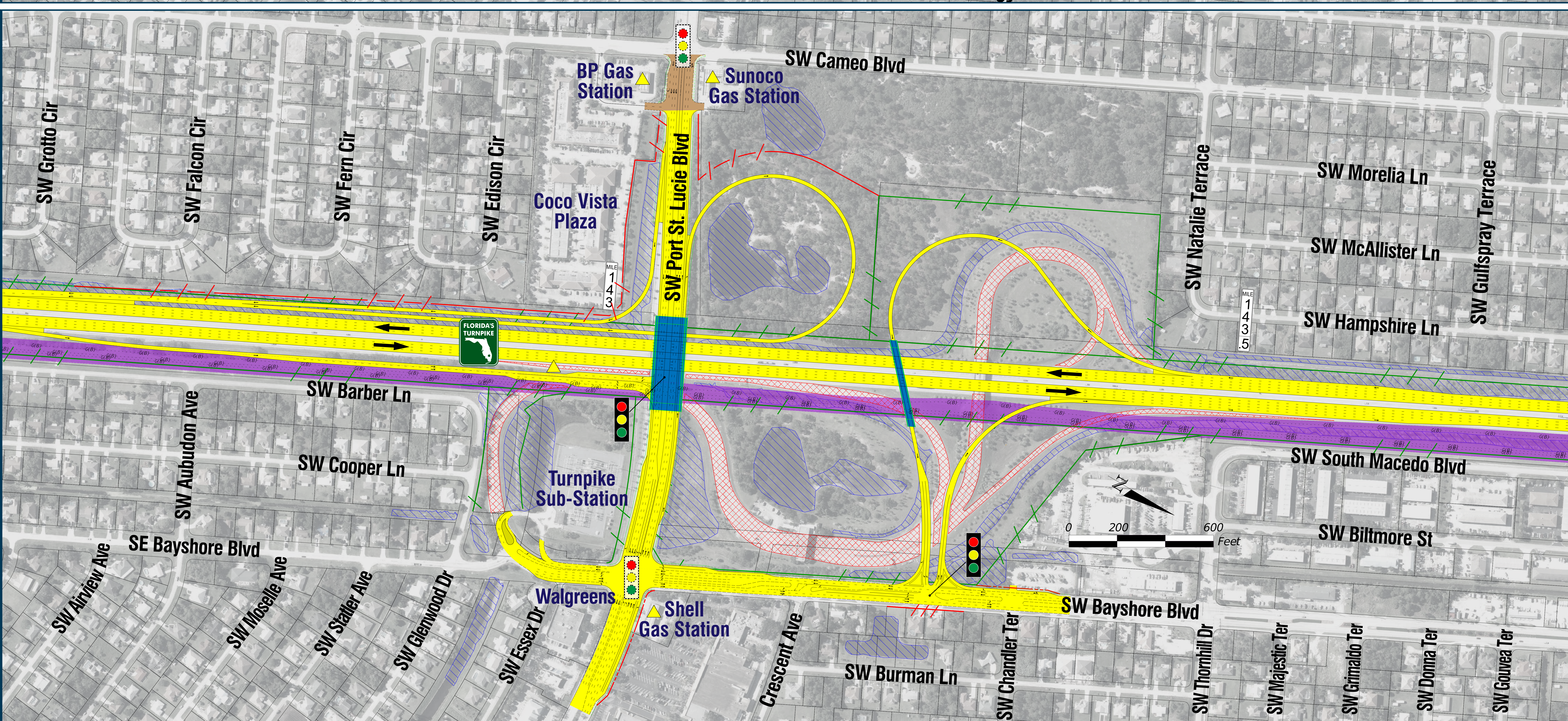
Financial Project Identification (FPID) Number: 423374-1

Efficient Transportation Decision Making (ETDM) Number: 14295

Alternative A



Alternative B



MATRIX CHART

PORT ST. LUCIE BOULEVARD (EXIT 142)			
EVALUATION PARAMETERS	NO-BUILD	ALTERNATIVE A	ALTERNATIVE B
ENGINEERING	Traffic Operation Issues (Year 2045)	Major	Minor
	Construction Complexity	None/No Change	Minor
	Impacts to Local Road/Traffic Patterns	None/No Change	Moderate
ENVIRONMENTAL & COMMUNITY	Floodplain Impact (ac)	None/No Change	Minimal to None
	Wetland Impact (ac)	None/No Change	4.2
	Estimated Residential & Business Relocations	None/No Change	± 2 (Residential)
	Other Issues	None/No Change	Impacts to FGT Facilities Minimized
COST	Estimated Cost (Excludes Utility Cost)	Construction = \$46,000,000 Right of Way = \$16,700,000 Total = \$62,700,000	Construction = \$45,900,000 Right of Way = \$16,500,000 Total = \$62,400,000

Legend

None/No Change	Moderate
Minor/Minimal to None	Major

LEGEND

- PROPERTY LINES
- EXISTING ROW LINE
- EXISTING LIMITED ACCESS ROW LINE
- POTENTIAL ROW LINE
- POTENTIAL LIMITED ACCESS ROW LINE
- RAILROAD
- PROPOSED ROADWAY
- PROPOSED BRIDGE
- EXISTING BRIDGE
- OTHER PROJECTS (BRIDGE)
- OTHER PROJECTS (ROADS)
- WETLANDS/OTHER SURFACE WATERS
- PAVEMENT REMOVAL
- POTENTIAL NEW TRAFFIC SIGNAL
- EXISTING TRAFFIC SIGNAL
- FLORIDA GAS TRANSMISSION (FGT) SPECIFIED WIDTH
- FUTURE TOLL GANTRY
- POTENTIAL MEDIUM/HIGH CONTAMINATION SITES

NOTE: ROW = RIGHT OF WAY

Aerial Flight Date: December 2017 - March 2018