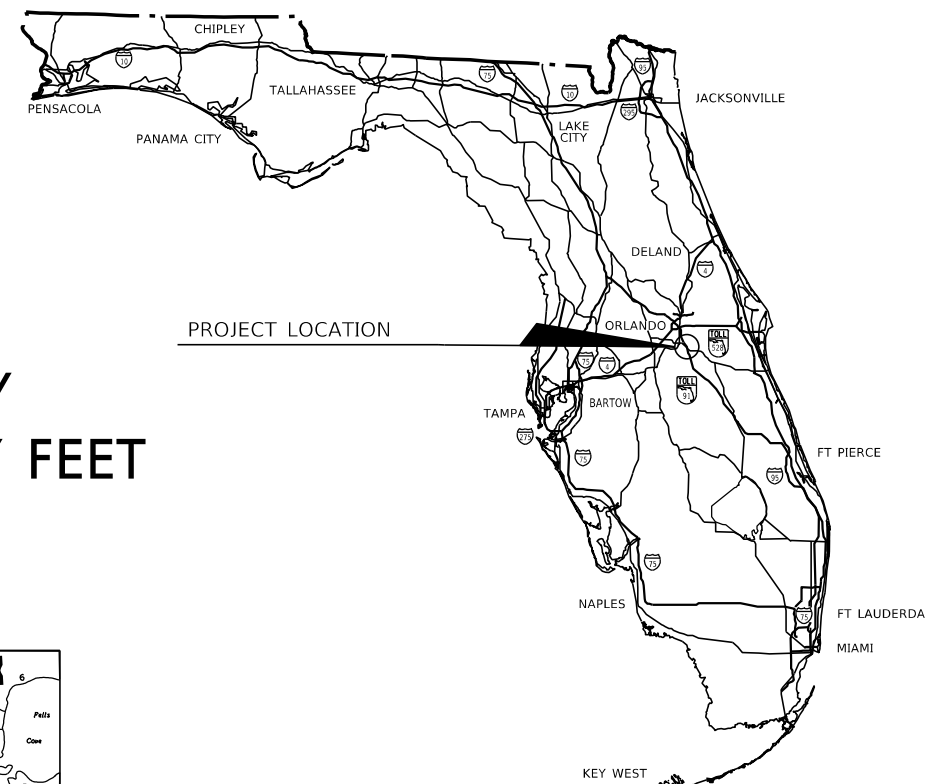


LEGEND:

- \overline{B} = BASELINE
- Δ = DELTA (CENTRAL ANGLE)
- D = DEGREE OF CURVE
- CMON = PRECAST CONCRETE MONUMENT
- E. = EASTING
- FDOT = FLORIDA DEPARTMENT OF TRANSPORTATION
- ID = IDENTIFICATION
- IP = IRON PIPE
- IR = IRON ROD
- I.R.C. = IRON ROD AND CAP
- L = LENGTH
- L.A. = LIMITED ACCESS
- LB = LICENSE BUSINESS
- LS = LICENSE SURVEYOR
- LT = LEFT
- MP = MILE POST
- MT = MOBILE LIDAR TARGET NUMBER
- N. = NOTHING
- NOID = NO IDENTIFICATION
- PB = PLAT BOOK
- PC = POINT OF CURVATURE
- PCP = PERMANENT CONTROL POINT
- PG = PAGE
- \triangle = MONUMENT AS LABELED ON SHEETS 11-15
- \square = MONUMENT AS LABELED ON SHEETS 11-15
- \circ = MONUMENT AS LABELED ON SHEETS 11-15
- PI = POINT OF INTERSECTION
- PK = PARKER-KALON
- PNC = PROJECT NETWORK CONTROL NUMBER
- PRM = PERMANENT REFERENCE MONUMENT
- PSM = PROFESSIONAL SURVEYOR & MAPPER
- POT = POINT ON TANGENT
- PT = POINT OF TANGENCY
- R = RADIUS
- RGE. = RANGE
- RLS = REGISTERED LICENSE SURVEYOR
- RT = RIGHT
- R/W = RIGHT OF WAY
- SEC. = SECTION
- S.R. = STATE ROAD
- STA. = STATION
- T = TANGENT
- TWP. = TOWNSHIP
- \pm = MORE OR LESS

STATE OF FLORIDA
DEPARTMENT OF TRANSPORTATION

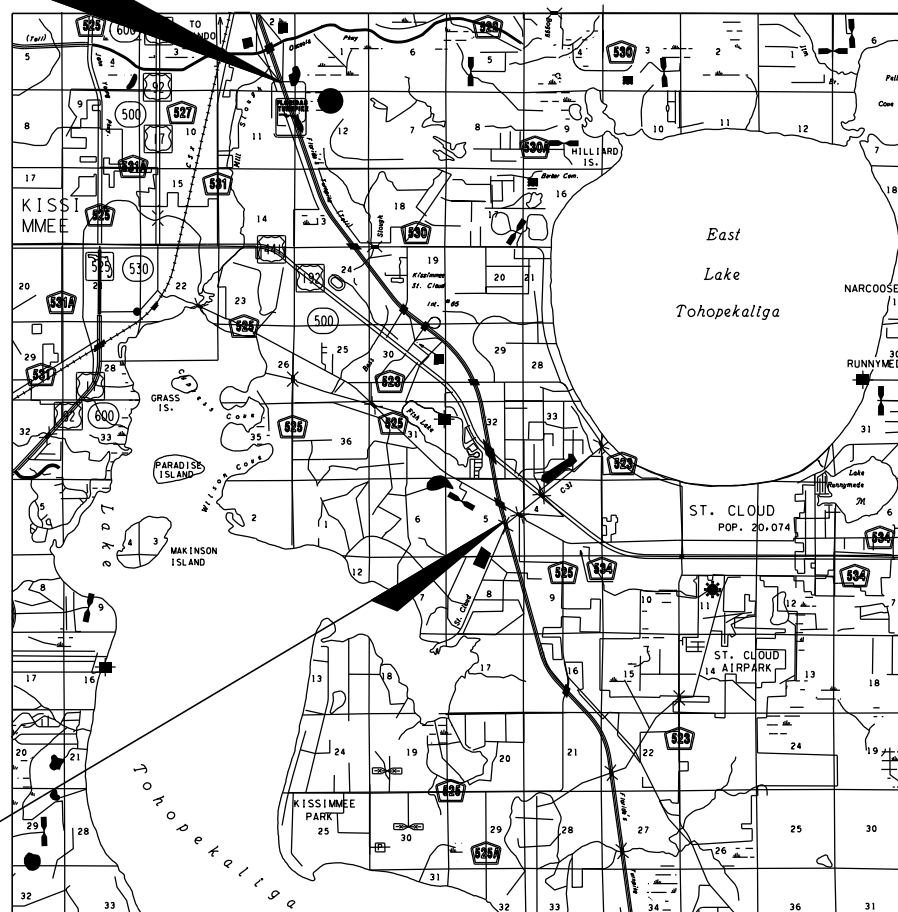
FINANCIAL PROJECT ID. NO. 436194-1
STATE ROAD 91 (TURNPIKE MAINLINE)
FROM MP 242 TO MP 248
OSCEOLA COUNTY
NEPTUNE ROAD TO OSCEOLA PARKWAY
STATE PLANE COORDINATES ARE IN SURVEY FEET
ZONE : 0901 FLORIDA EAST



END BASELINE OF SURVEY
 \overline{B} STA. 4984+81.63
(=MP 248.2 \pm)

GENERAL NOTES

1. THIS PROJECT SURVEY CONTROL IS ESTABLISHED TO FACILITATE THE HORIZONTAL AND VERTICAL CONTROL FOR TERRESTRIAL MOBILE LIDAR TARGETING, DTM SURVEY, DESIGN, CONSTRUCTION OF TURNPIKE MAINLINE (SR 91) WIDENING WITH EXPRESS LANES AND RIGHT OF WAY MAPPING.
2. HORIZONTAL AND VERTICAL VALUES FOR SURVEY CONTROL POINTS ARE REFERENCED TO PROJECT NETWORK CONTROL FOR FINANCIAL PROJECT ID NO. 432827-1 RESURFACING AND SAFETY UPGRADES TURNPIKE MAINLINE (SR 91) FROM MP 238.76 TO MP 248.5; - NORTH AMERICAN DATUM (N.A.D.) NAD83 (2011) FLORIDA EAST ZONE FROM NATIONAL GEODETIC SURVEY (N.G.S.). BEARINGS AND COORDINATES ARE BASED ON FLORIDA STATE PLANE COORDINATE SYSTEM, EAST ZONE, NORTH AMERICAN DATUM (N.A.D.) OF 1983, ADJUSTMENT OF 2011. ALL ELEVATIONS ARE RELATIVE TO NORTH AMERICAN VERTICAL DATUM (N.A.V.D.) OF 1988.
CONTROL POINTS USED:
(WGI) AT111, BLC01, BLC02 AND (NGS) Y 513 (NGS PID (DF6733)
3. AVERAGE COMBINED SCALE FACTOR FOR PROJECT LIMITS: 0.99995559
4. ALL HORIZONTAL AND VERTICAL INFORMATION IS U.S. SURVEY FEET.
5. THE BASELINE OF SURVEY WAS NOT PHYSICALLY STAKED IN THE FIELD.
6. STATIONS AND OFFSETS ARE RELATIVE TO THE BASELINE OF SURVEY, UNLESS OTHERWISE INDICATED.
7. ALL DISTANCES, ANGLES, BEARINGS, STATIONS, AND OFFSETS ARE CALCULATED, UNLESS OTHERWISE INDICATED.
8. SEE SHEET CTL-13 FOR DATUM COMPARISON OF THE NAD83 (1990) TO NAD83 (2011) FOR CONTROL POINTS AT111, BLC01 AND BLC02.
9. THE OFFICIAL RECORD OF THESE SHEETS (CTL-1 THROUGH CTL-15) IS THE SURVEYOR'S REPORT FOR FINANCIAL PROJECT ID 436194-1 TURNPIKE MAINLINE (SR 91) WIDENING WITH EXPRESS LANES FROM MP 242.00 TO MP 248.93 ON FILE AT THE SURVEYING AND MAPPING OFFICE OF FLORIDA'S TURNPIKE ENTERPRISE. SEE SAID REPORT FOR THE SURVEYOR'S CERTIFICATION.



(VICINITY MAP)

BEGIN BASELINE OF SURVEY
 \overline{B} STA. 4650+00.00
(=MP 241.8 \pm)

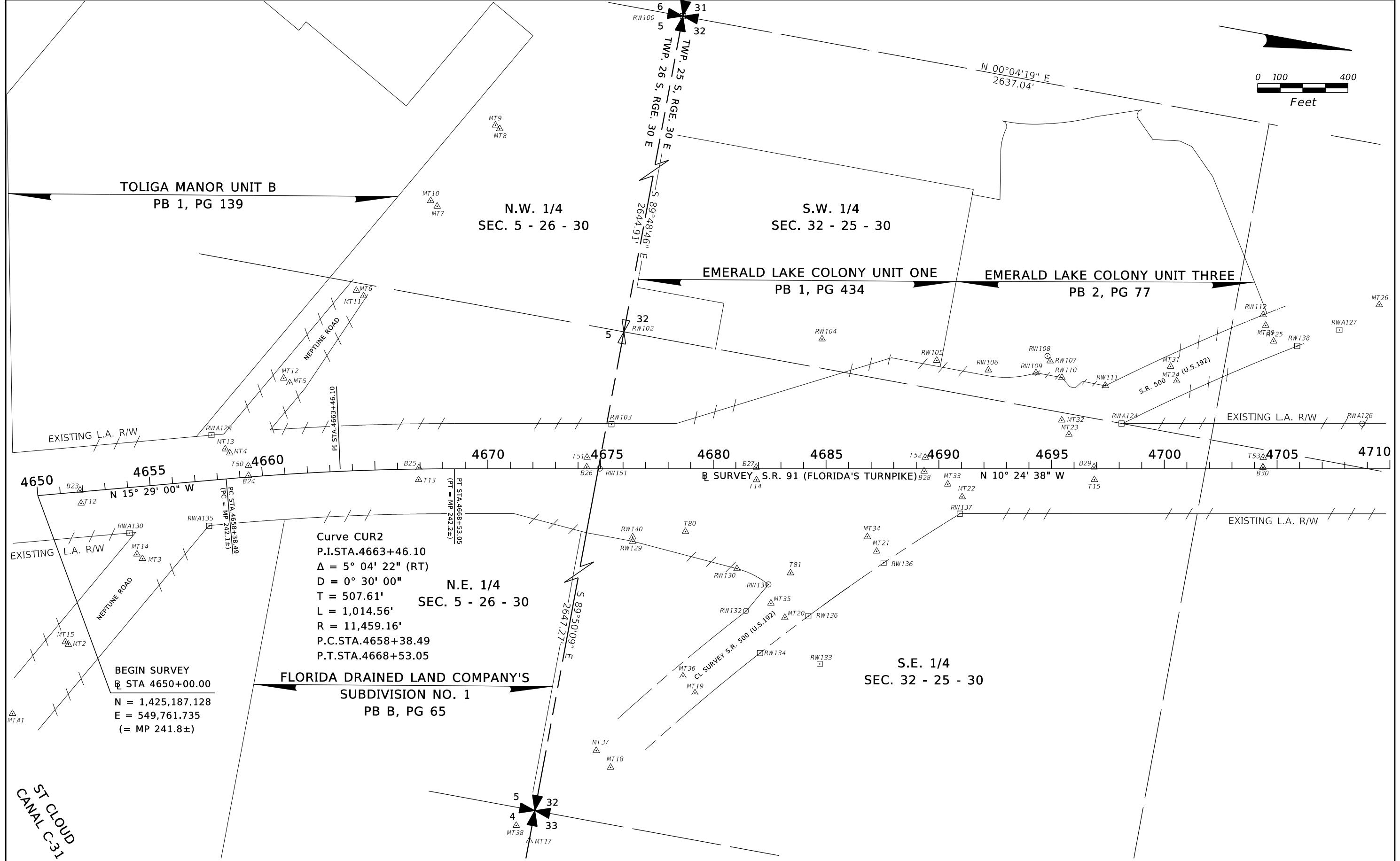
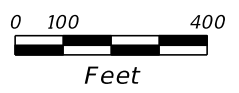
INDEX	
SHEET NO.	SHEET DESCRIPTION
1	COVER SHEET
2 - 10	DETAIL SHEETS
11 - 15	TAB SHEETS

REFERENCES

- TURNPIKE CONTRACT NO. 10.5
- TURNPIKE CONTRACT NO. 10.6
- TURNPIKE CONTRACT NO. 11.1
- FDOT R/W MAP SEC. 92030
- FDOT R/W MAP SEC. 92471-2304
- FDOT R/W MAP SEC. 97775-2329
- FDOT R/W MAP SEC. 97920-2342
- PNC FPID 432827-1
- RECORD PLATS OF OSCEOLA COUNTY



REVISIONS				WBQ DESIGN & ENGINEERING, INC. LICENSE NUMBER: LB 7963 201 NORTH MAGNOLIA AVENUE SUITE 200 ORLANDO, FLORIDA 32801 407-839-4300 HERMAN DANIEL WILLIAMS, III, P.S.M. 6227	STATE OF FLORIDA DEPARTMENT OF TRANSPORTATION			PROJECT SURVEY CONTROL	SHEET NO. CTL-1
DATE	DESCRIPTION	DATE	DESCRIPTION		ROAD NO.	COUNTY	FINANCIAL PROJECT ID		
					91	OSCEOLA	436194-1		



Curve CUR2
 P.I.STA.4663+46.10
 $\Delta = 5^\circ 04' 22''$ (RT)
 $D = 0^\circ 30' 00''$
 $T = 507.61'$
 $L = 1,014.56'$
 $R = 11,459.16'$
 P.C.STA.4658+38.49
 P.T.STA.4668+53.05

BEGIN SURVEY
 STA 4650+00.00
 $N = 1,425,187.128$
 $E = 549,761.735$
 (= MP 241.8±)

ST CLOUD
 CANAL C-31

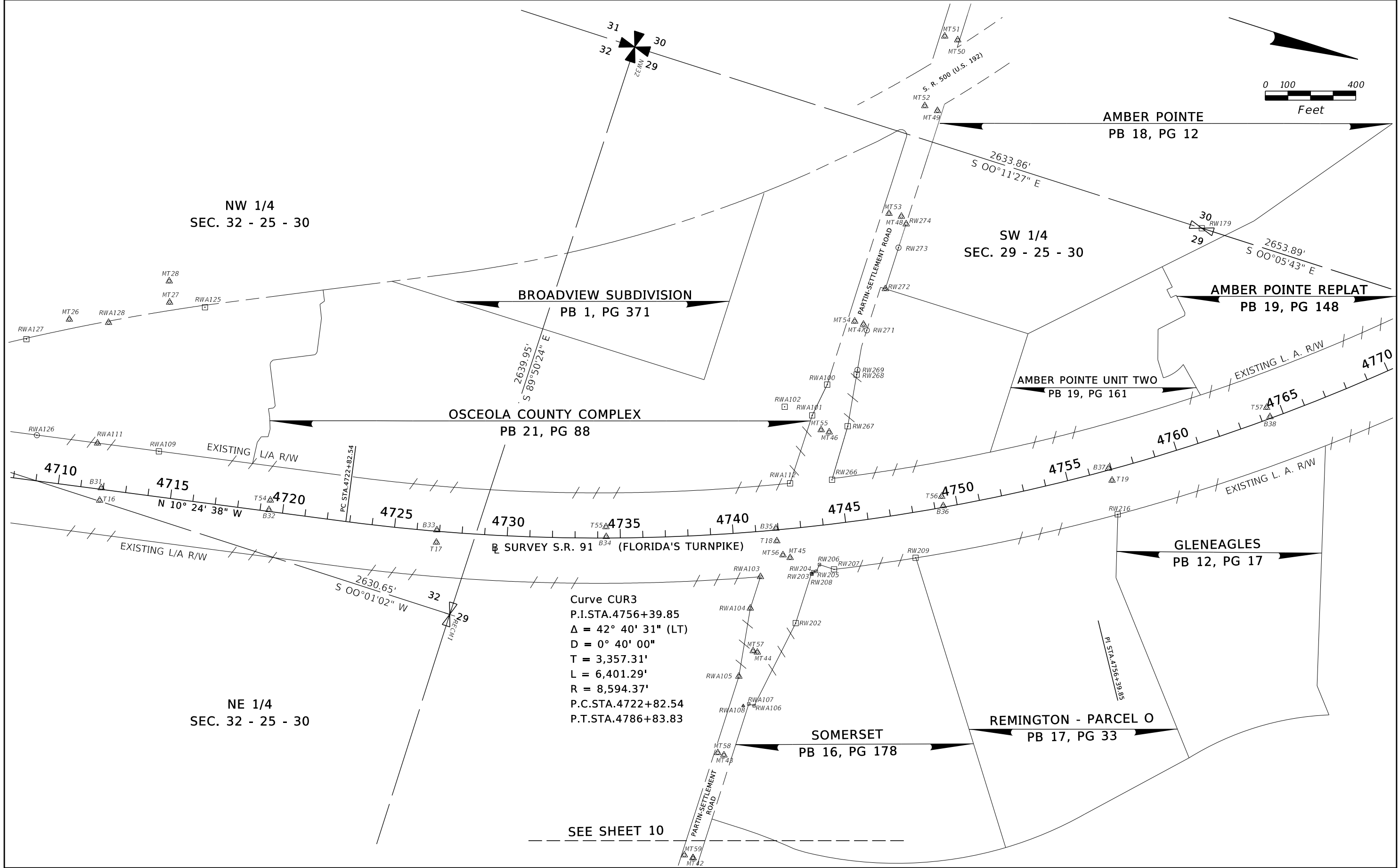
REVISIONS			
DATE	DESCRIPTION	DATE	DESCRIPTION

WBQ DESIGN & ENGINEERING, INC.
 LICENSE NUMBER: LB 7963
 201 NORTH MAGNOLIA AVENUE
 SUITE 200
 ORLANDO, FLORIDA 32801
 407-839-4300
 HERMAN DANIEL WILLIAMS, III, P.S.M. 6227

STATE OF FLORIDA DEPARTMENT OF TRANSPORTATION		
ROAD NO.	COUNTY	FINANCIAL PROJECT ID
91	OSCEOLA	436194-1

PROJECT SURVEY CONTROL

SHEET NO.
 CTL-2



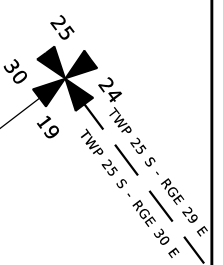
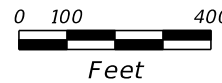
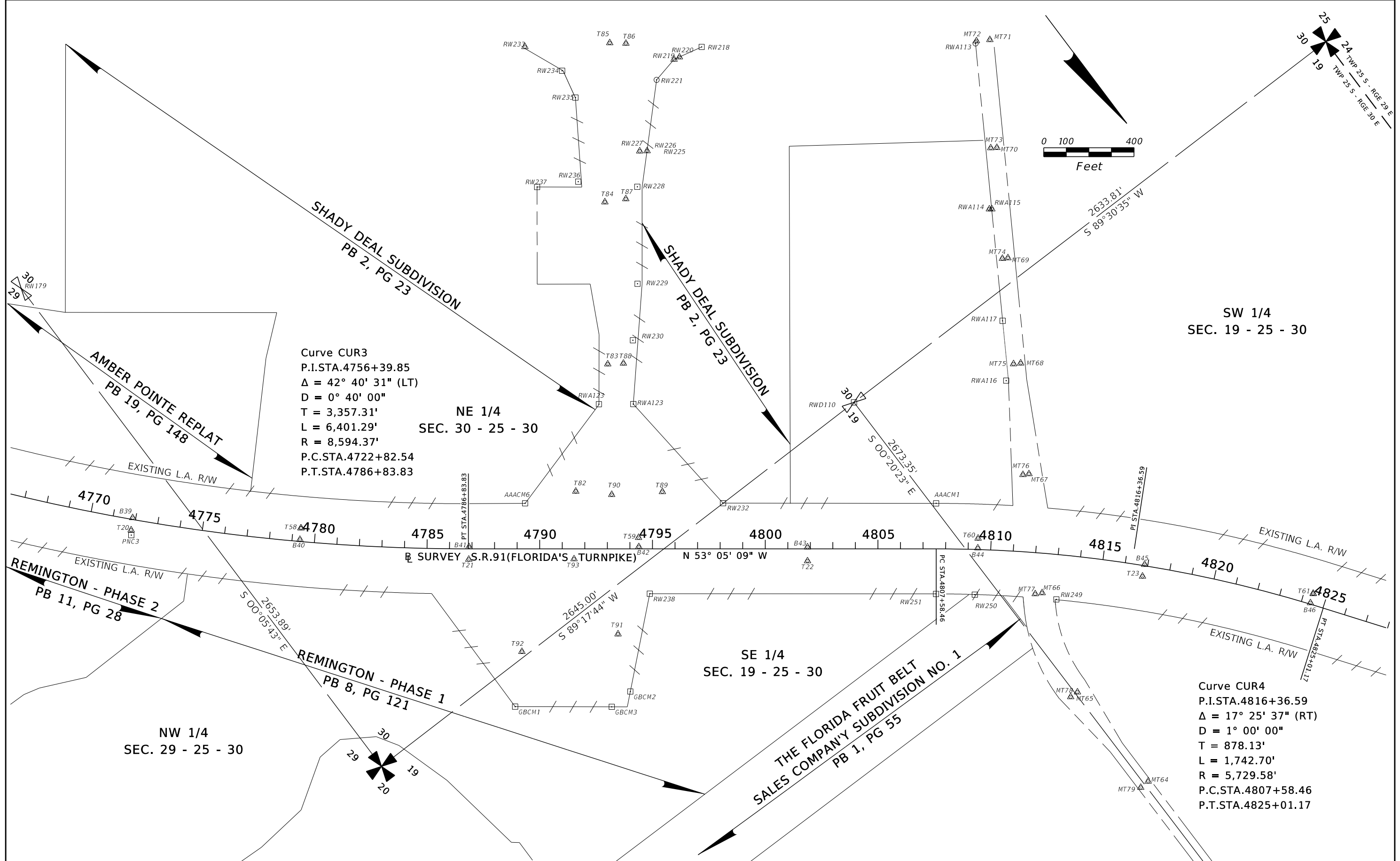
REVISIONS			
DATE	DESCRIPTION	DATE	DESCRIPTION

WBQ DESIGN & ENGINEERING, INC.
 LICENSE NUMBER: LB 7963
 201 NORTH MAGNOLIA AVENUE
 SUITE 200
 ORLANDO, FLORIDA 32801
 407-839-4300
 HERMAN DANIEL WILLIAMS, III, P.S.M. 6227

STATE OF FLORIDA DEPARTMENT OF TRANSPORTATION		
ROAD NO.	COUNTY	FINANCIAL PROJECT ID
91	OSCEOLA	439164-1

PROJECT SURVEY CONTROL

SHEET NO.
CTL-3



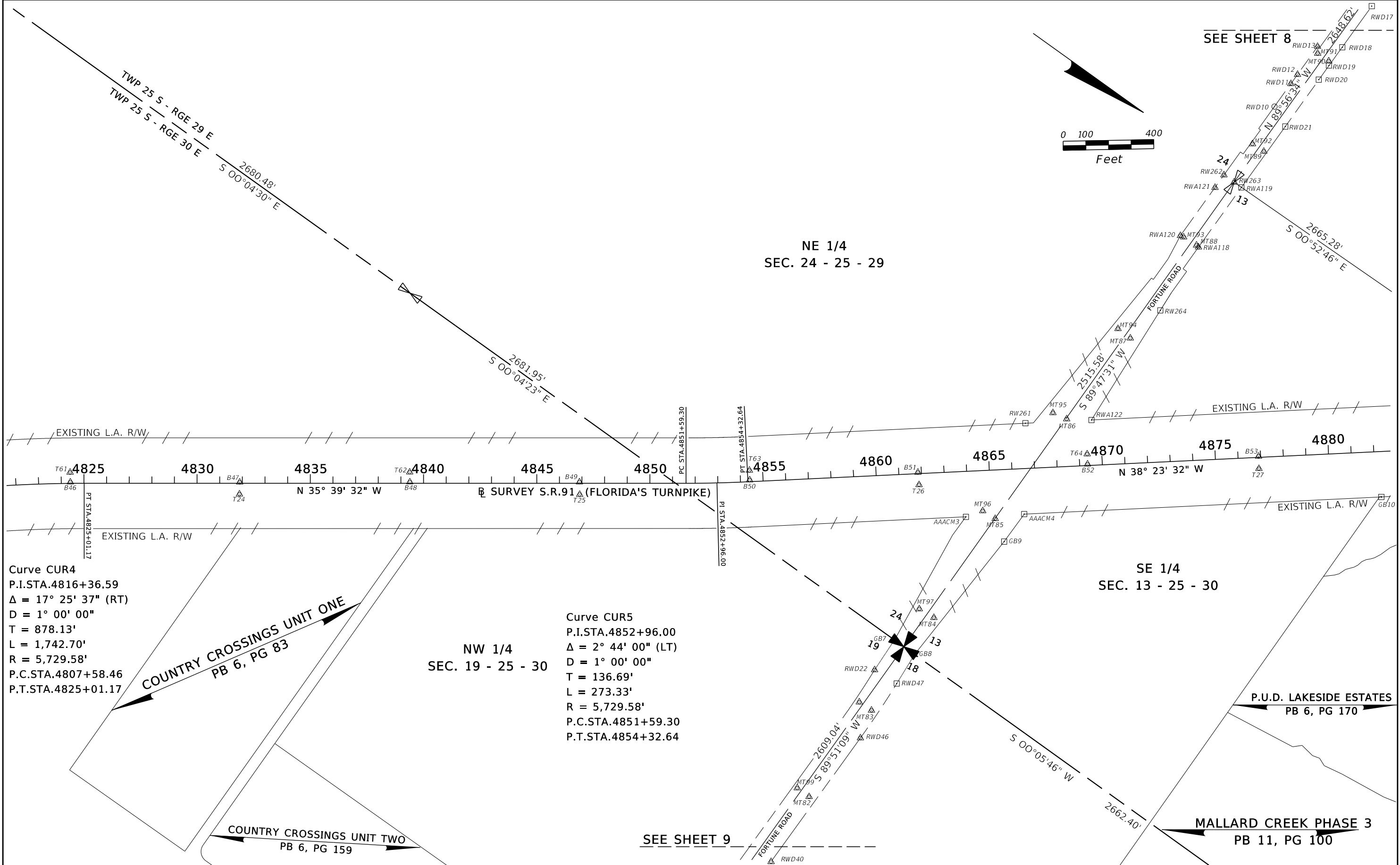
REVISIONS			
DATE	DESCRIPTION	DATE	DESCRIPTION

WBQ DESIGN & ENGINEERING, INC.
 LICENSE NUMBER: LB 7963
 201 NORTH MAGNOLIA AVENUE
 SUITE 200
 ORLANDO, FLORIDA 32801
 407-839-4300
 HERMAN DANIEL WILLIAMS, III, P.S.M. 6227

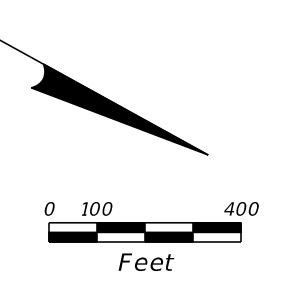
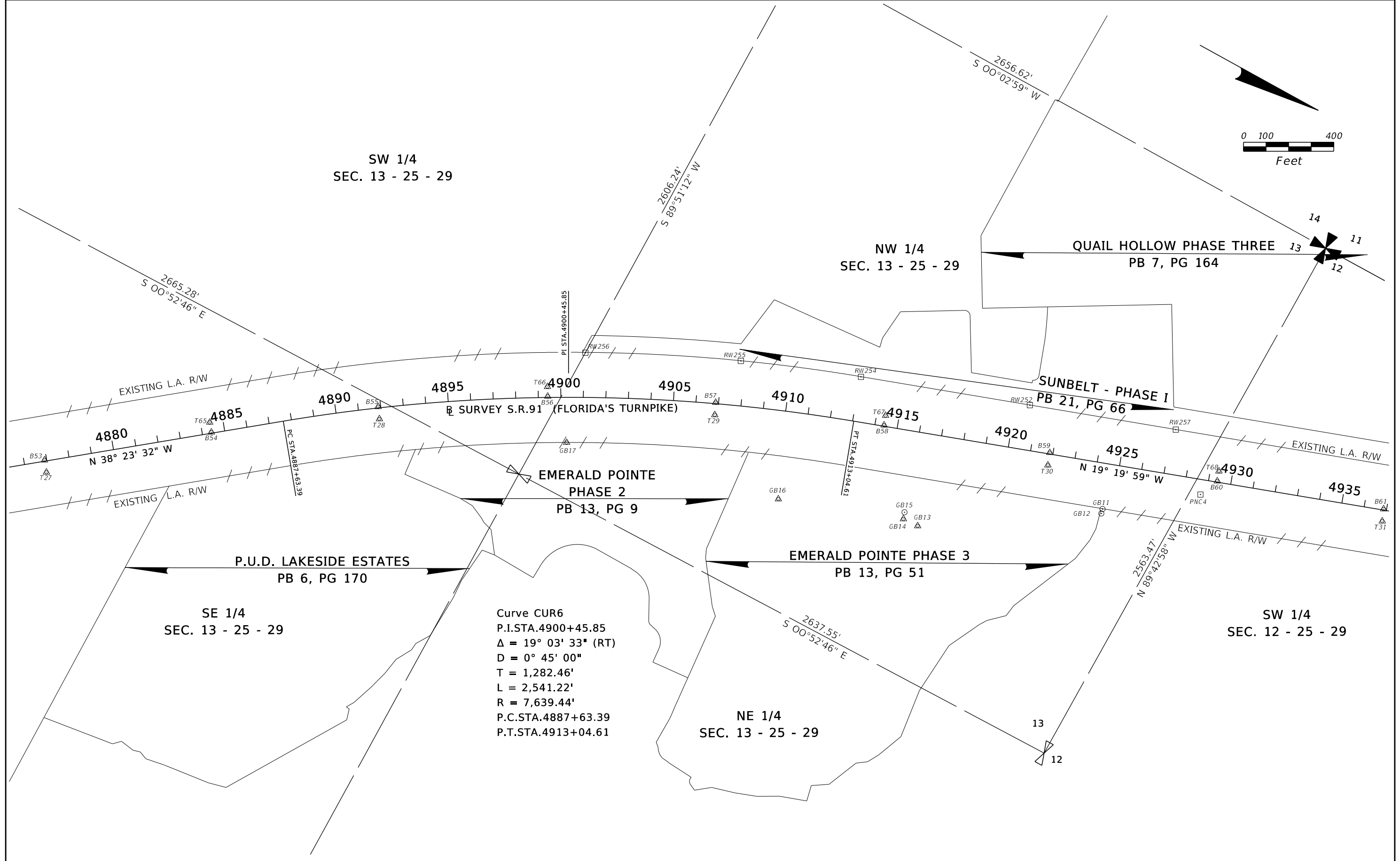
STATE OF FLORIDA DEPARTMENT OF TRANSPORTATION		
ROAD NO.	COUNTY	FINANCIAL PROJECT ID
91	OSCEOLA	436194-1

PROJECT SURVEY CONTROL

SHEET NO.
CTL-4

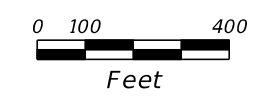


REVISIONS				WBQ DESIGN & ENGINEERING, INC. LICENSE NUMBER: LB 7963 201 NORTH MAGNOLIA AVENUE SUITE 200 ORLANDO, FLORIDA 32801 407-839-4300 HERMAN DANIEL WILLIAMS, III, P.S.M. 6227	STATE OF FLORIDA DEPARTMENT OF TRANSPORTATION			PROJECT SURVEY CONTROL	SHEET NO. CTL-5
DATE	DESCRIPTION	DATE	DESCRIPTION		ROAD NO.	COUNTY	FINANCIAL PROJECT ID		
				91	OSCEOLA	436194-1			



Curve CUR6
 P.I.STA.4900+45.85
 $\Delta = 19^\circ 03' 33''$ (RT)
 $D = 0^\circ 45' 00''$
 $T = 1,282.46'$
 $L = 2,541.22'$
 $R = 7,639.44'$
 P.C.STA.4887+63.39
 P.T.STA.4913+04.61

REVISIONS				WBQ DESIGN & ENGINEERING, INC. LICENSE NUMBER: LB 7963 201 NORTH MAGNOLIA AVENUE SUITE 200 ORLANDO, FLORIDA 32801 407-839-4300 HERMAN DANIEL WILLIAMS, III, P.S.M. 6227	STATE OF FLORIDA DEPARTMENT OF TRANSPORTATION			PROJECT SURVEY CONTROL	SHEET NO. CTL-6
DATE	DESCRIPTION	DATE	DESCRIPTION		ROAD NO.	COUNTY	FINANCIAL PROJECT ID		
				91	OSCEOLA	436194-1			



SE 1/4
SEC. 11 - 25 - 29

WESTWOOD FOREST
PB 6, PG 28

OAK RUN UNIT 5
PB 5, PG 77

OAK RUN UNIT 9
PB 6, PG 134

OAK RUN UNIT 6
PB 6, PG 2

NE 1/4
SEC. 11 - 25 - 29

QUAIL HOLLOW PHASE ONE
PB 6, PG 105

EXISTING L.A. R/W



SW 1/4
SEC. 12 - 25 - 29

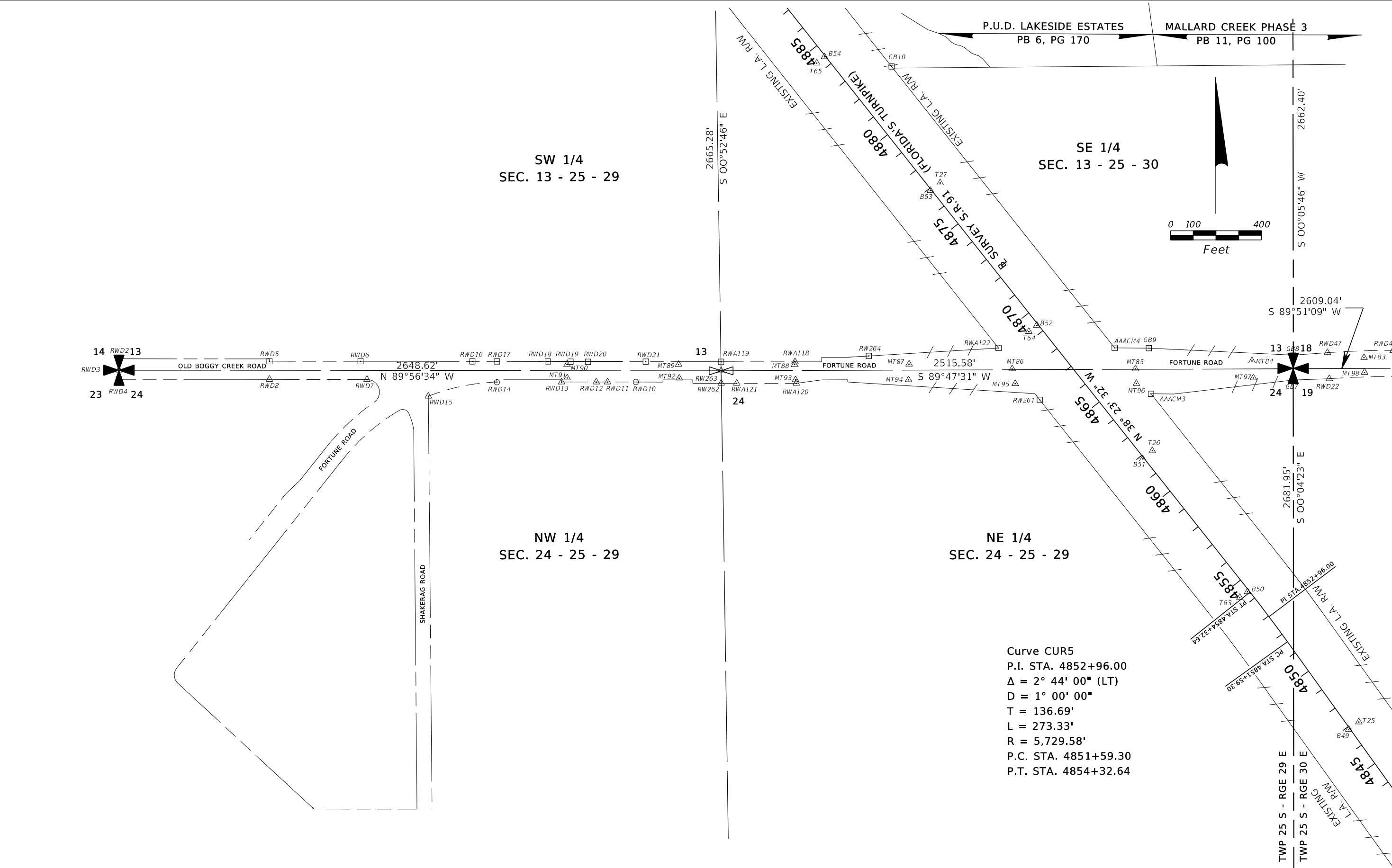
BUENAVENTURA LAKES UNIT 6
2ND ADDITION
PB 4, PG 9

BUENAVENTURA LAKES UNIT 6
3RD ADDITION
PB 4, PG 11

NW 1/4
SEC. 12 - 25 - 29

END SURVEY
STA 4984+81.63
N = 1,454,105.323
E = 534,786.070
(= MP 248.2±)

REVISIONS				WBQ DESIGN & ENGINEERING, INC. LICENSE NUMBER: LB 7963 201 NORTH MAGNOLIA AVENUE SUITE 200 ORLANDO, FLORIDA 32801 407-839-4300 HERMAN DANIEL WILLIAMS, III, P.S.M. 6227	STATE OF FLORIDA DEPARTMENT OF TRANSPORTATION			PROJECT SURVEY CONTROL	SHEET NO.
DATE	DESCRIPTION	DATE	DESCRIPTION		ROAD NO.	COUNTY	FINANCIAL PROJECT ID		
					91	OSCEOLA	436194-1		CTL-7



REVISIONS			
DATE	DESCRIPTION	DATE	DESCRIPTION

WBQ DESIGN & ENGINEERING, INC.
 LICENSE NUMBER: LB 7963
 201 NORTH MAGNOLIA AVENUE
 SUITE 200
 ORLANDO, FLORIDA 32801
 407-839-4300
 HERMAN DANIEL WILLIAMS, III, P.S.M. 6227

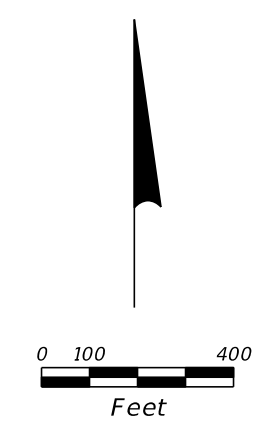
STATE OF FLORIDA DEPARTMENT OF TRANSPORTATION		
ROAD NO.	COUNTY	FINANCIAL PROJECT ID
91	OSCEOLA	436194-1

PROJECT SURVEY CONTROL

SHEET NO.
CTL-8

P.U.D. LAKESIDE ESTATES
PB 6, PG 170

MALLARD CREEK PHASE 3
PB 11, PG 100



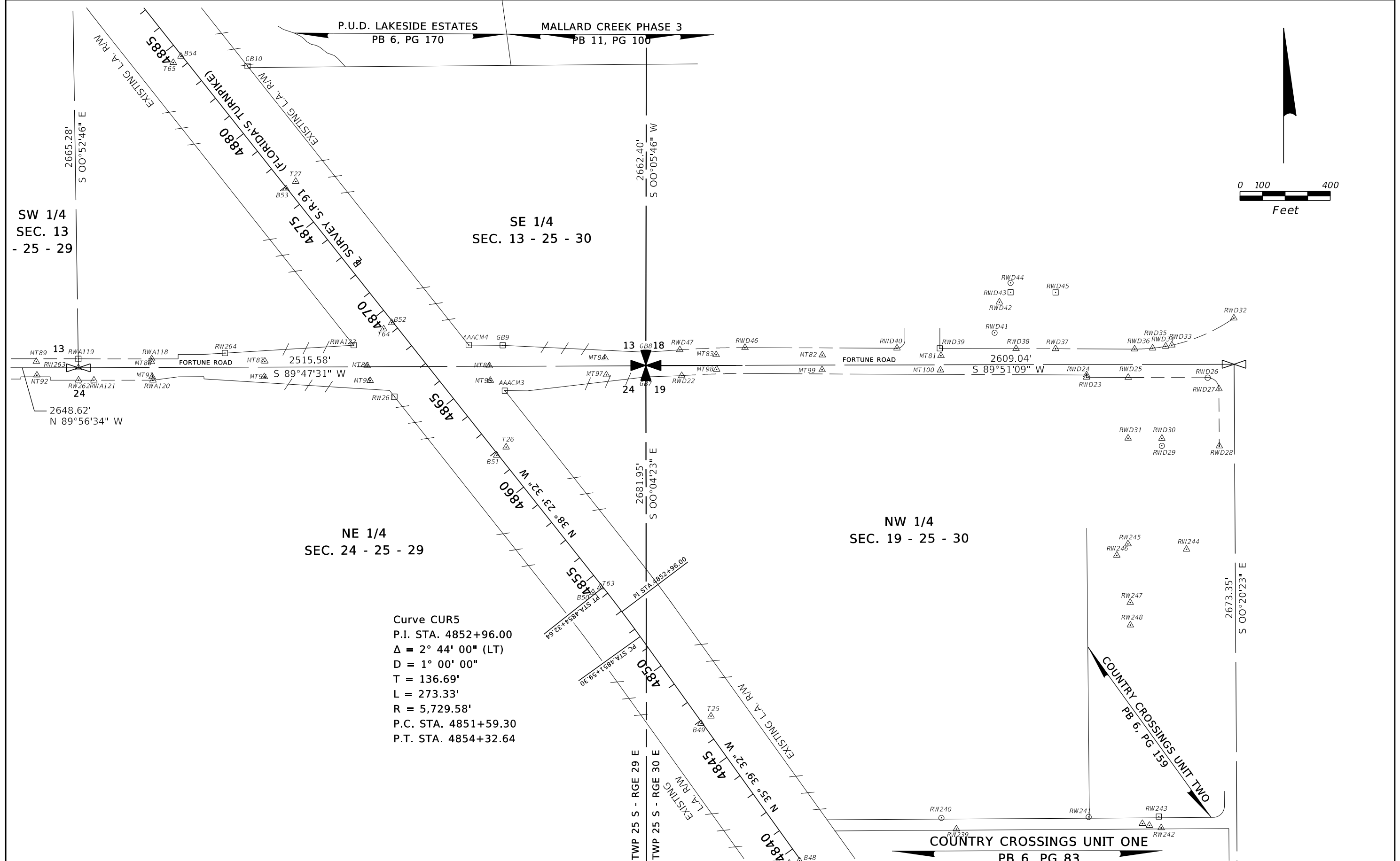
SW 1/4
SEC. 13
- 25 - 29

SE 1/4
SEC. 13 - 25 - 30

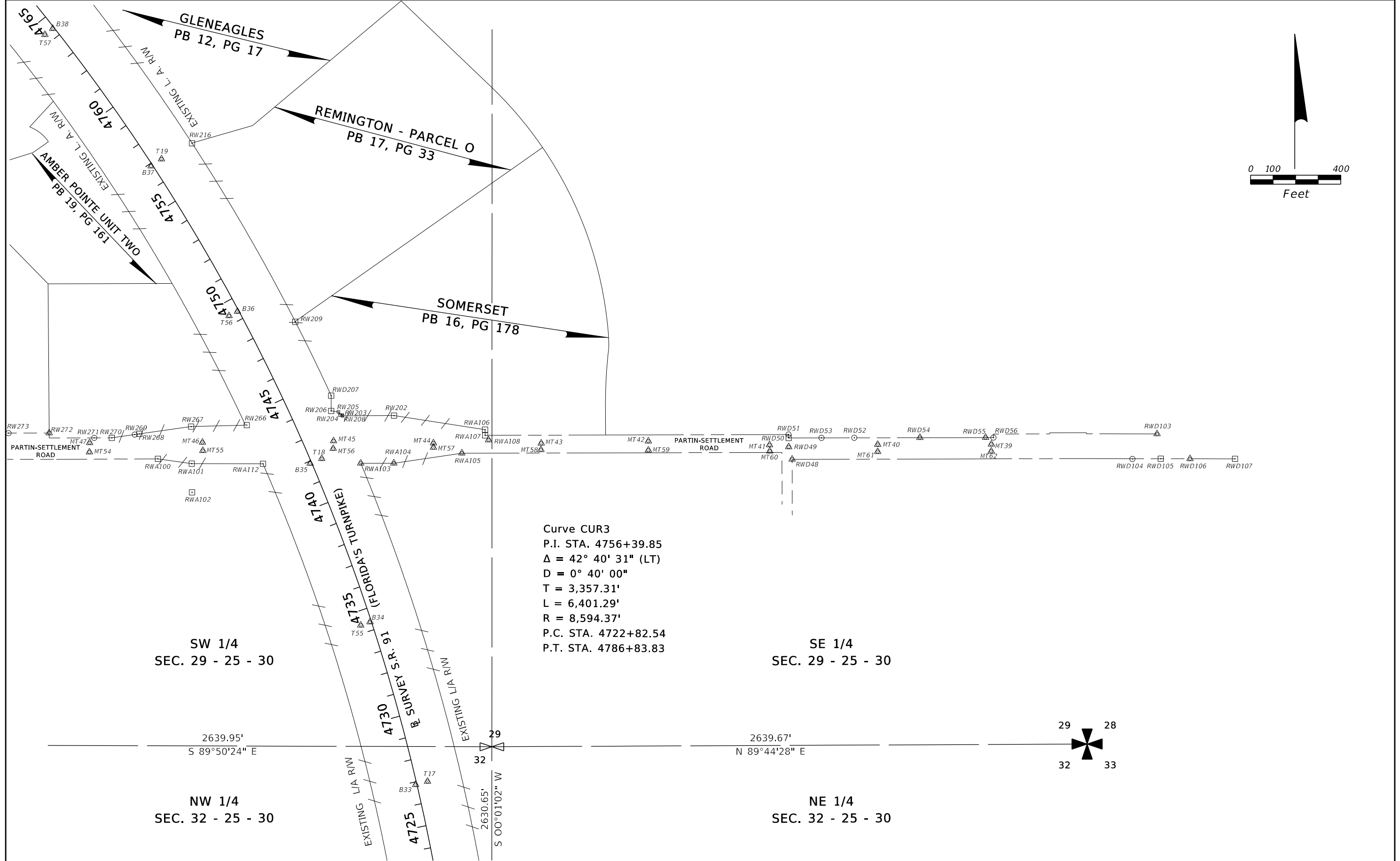
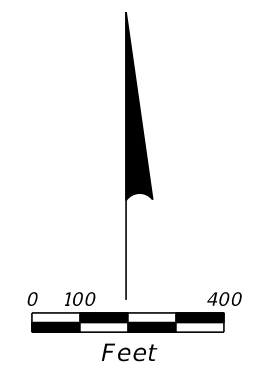
NE 1/4
SEC. 24 - 25 - 29

NW 1/4
SEC. 19 - 25 - 30

Curve CUR5
P.I. STA. 4852+96.00
 $\Delta = 2^\circ 44' 00''$ (LT)
D = 1° 00' 00"
T = 136.69'
L = 273.33'
R = 5,729.58'
P.C. STA. 4851+59.30
P.T. STA. 4854+32.64



REVISIONS				WBQ DESIGN & ENGINEERING, INC. LICENSE NUMBER: LB 7963 201 NORTH MAGNOLIA AVENUE SUITE 200 ORLANDO, FLORIDA 32801 407-839-4300 HERMAN DANIEL WILLIAMS, III, P.S.M. 6227	STATE OF FLORIDA DEPARTMENT OF TRANSPORTATION			PROJECT SURVEY CONTROL	SHEET NO. CTL-9
DATE	DESCRIPTION	DATE	DESCRIPTION		ROAD NO.	COUNTY	FINANCIAL PROJECT ID		
					91	OSCEOLA	436194-1		



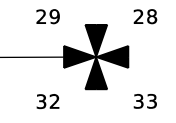
Curve CUR3
 P.I. STA. 4756+39.85
 $\Delta = 42^\circ 40' 31''$ (LT)
 $D = 0^\circ 40' 00''$
 $T = 3,357.31'$
 $L = 6,401.29'$
 $R = 8,594.37'$
 P.C. STA. 4722+82.54
 P.T. STA. 4786+83.83

SW 1/4
 SEC. 29 - 25 - 30

SE 1/4
 SEC. 29 - 25 - 30

NW 1/4
 SEC. 32 - 25 - 30

NE 1/4
 SEC. 32 - 25 - 30



REVISIONS				WBQ DESIGN & ENGINEERING, INC. LICENSE NUMBER: LB 7963 201 NORTH MAGNOLIA AVENUE SUITE 200 ORLANDO, FLORIDA 32801 407-839-4300 HERMAN DANIEL WILLIAMS, III, P.S.M. 6227	STATE OF FLORIDA DEPARTMENT OF TRANSPORTATION			PROJECT SURVEY CONTROL	SHEET NO. CTL-10
DATE	DESCRIPTION	DATE	DESCRIPTION		ROAD NO.	COUNTY	FINANCIAL PROJECT ID		
					91	OSCEOLA	436194-1		

PRIMARY NETWORK CONTROL

POINT NAME	(Y) NORTHING	(X) EASTING	SCALE FACTOR	LATITUDE	LONGITUDE	BASILINE STATION	OFFSET	ELEVATION	DESCRIPTION
PNC1	1410026.9470	556759.5689	0.99995250	28 12 44.39549	81 18 31.19030	4479+63.12	74.82' RT	70.05	SET 4"X4" CMON WITH DISC "WBQ TRAV"
PNC2	1422127.9180	550674.3337	0.99995393	28 14 44.05655	81 19 39.57715	4618+08.19	62.79' RT	61.41	SET 4"X4" CMON WITH DISC "WBQ TRAV"
PNC3	1436690.2530	546193.2957	0.99995504	28 17 8.12365	81 20 30.14166	4771+92.12	62.47' RT	66.31	SET 4"X4" CMON WITH DISC "WBQ TRAV"
PNC4	1448836.7250	536704.7432	0.99995753	28 19 8.11458	81 22 16.69455	4928+74.93	66.26' RT	78.71	SET 4"X4" CMON WITH DISC "WBQ TRAV"
PNC5	1460017.0060	532780.7025	0.99995863	28 20 58.69368	81 23 .99852	OFFCHAIN	OFFCHAIN	83.01	SET 4"X4" CMON WITH DISC "WBQ TRAV"

SECONDARY NETWORK CONTROL

POINT NAME	(Y) NORTHING	(X) EASTING	ELEVATION	BASILINE STATION	OFFSET	DESCRIPTION	POINT NAME	(Y) NORTHING	(X) EASTING	ELEVATION	BASILINE STATION	OFFSET	DESCRIPTION
B1	1410628.2410	556337.6880	70.57	OffChain	OffChain	SET 5/8" IRC "WBQ TRAV"	B55	1445455.2430	538124.1300	79.64	4891+91.58	5.21' LT	SET 5/8" IRC "WBQ TRAV"
B2	1411229.5310	555896.4560	71.48	OffChain	OffChain	SET 5/8" IRC "WBQ TRAV"	B56	1446091.4150	537720.6530	79.66	4899+44.70	5.29' LT	SET 5/8" IRC "WBQ TRAV"
B3	1411787.1270	555391.1120	71.94	OffChain	OffChain	SET 5/8" IRC "WBQ TRAV"	B57	1446757.0540	537385.2870	79.54	4906+89.84	5.03' LT	SET 5/8" IRC "WBQ TRAV"
B4	1412337.3340	554883.8900	71.93	OffChain	OffChain	SET 5/8" IRC "WBQ TRAV"	B58	1447459.7310	537112.7190	79.42	4914+43.40	4.63' LT	SET 5/8" IRC "WBQ TRAV"
B5	1412887.3520	554373.1040	72.11	OffChain	OffChain	SET 5/8" IRC "WBQ TRAV"	B59	1448162.0360	536864.8140	79.99	4921+88.17	6.05' LT	SET 5/8" IRC "WBQ TRAV"
B6	1413438.5470	553862.5110	72.19	OffChain	OffChain	SET 5/8" IRC "WBQ TRAV"	B60	1448873.0850	536616.6230	79.94	4929+41.29	4.85' LT	SET 5/8" IRC "WBQ TRAV"
B7	1414006.0890	553355.2650	72.26	OffChain	OffChain	SET 5/8" IRC "WBQ TRAV"	B61	1449579.2470	536369.0880	80.17	4936+89.58	4.65' LT	SET 5/8" IRC "WBQ TRAV"
B8	1414609.4790	552924.0710	72.30	OffChain	OffChain	SET 5/8" IRC "WBQ TRAV"	B62	1450286.5120	536120.1590	80.49	4944+39.37	5.39' LT	SET 5/8" IRC "WBQ TRAV"
B9	1415266.5880	552575.5750	71.90	OffChain	OffChain	SET 5/8" IRC "WBQ TRAV"	B63	1450994.2410	535871.1530	80.43	4951+89.63	6.06' LT	SET 5/8" IRC "WBQ TRAV"
B10	1415972.3890	552317.4240	72.01	OffChain	OffChain	SET 5/8" IRC "WBQ TRAV"	B64	1451703.9580	535622.5600	81.07	4959+41.62	5.67' LT	SET 5/8" IRC "WBQ TRAV"
B11	1416693.3220	552107.5910	68.46	OffChain	OffChain	SET 5/8" IRC "WBQ TRAV"	B65	1452409.4400	535374.7980	82.15	4966+89.35	5.91' LT	SET 5/8" IRC "WBQ TRAV"
B12	1417418.1760	551906.4420	66.11	OffChain	OffChain	SET 5/8" IRC "WBQ TRAV"	B66	1453121.9100	535124.7670	83.54	4974+44.41	5.97' LT	SET 5/8" IRC "WBQ TRAV"
B13	1418141.0160	551707.2820	72.36	OffChain	OffChain	SET 5/8" IRC "WBQ TRAV"	B67	1453827.5020	534877.6290	83.21	4981+92.03	5.58' LT	SET 5/8" IRC "WBQ TRAV"
B14	1418863.1920	551505.8280	68.48	OffChain	OffChain	SET 5/8" IRC "WBQ TRAV"	B68	1454535.6320	534628.7350	83.18	OffChain	OffChain	SET 5/8" IRC "WBQ TRAV"
B15	1419587.3480	551307.0400	62.59	OffChain	OffChain	SET 5/8" IRC "WBQ TRAV"	B69	1455245.5780	534380.0490	82.81	OffChain	OffChain	SET 5/8" IRC "WBQ TRAV"
B16	1420308.4270	551105.5170	62.86	OffChain	OffChain	SET 5/8" IRC "WBQ TRAV"	B70	1455949.3870	534133.3510	82.54	OffChain	OffChain	SET 5/8" IRC "WBQ TRAV"
B17	1421035.1370	550912.4770	62.90	OffChain	OffChain	SET 5/8" IRC "WBQ TRAV"	B71	1456660.4630	533892.9330	82.35	OffChain	OffChain	SET 5/8" IRC "WBQ TRAV"
B18	1421755.9510	550704.5170	63.10	OffChain	OffChain	SET 5/8" IRC "WBQ TRAV"	B72	1457367.5240	533635.8780	83.02	OffChain	OffChain	SET 5/8" IRC "WBQ TRAV"
B19	1422478.6750	550506.2150	62.72	OffChain	OffChain	SET 5/8" IRC "WBQ TRAV"	B73	1458071.9200	533388.2220	82.88	OffChain	OffChain	SET 5/8" IRC "WBQ TRAV"
B20	1423199.5520	550306.4130	62.78	OffChain	OffChain	SET 5/8" IRC "WBQ TRAV"	B74	1458779.7470	533141.1960	83.31	OffChain	OffChain	SET 5/8" IRC "WBQ TRAV"
B21	1423926.4930	550108.3660	66.52	OffChain	OffChain	SET 5/8" IRC "WBQ TRAV"	B75	1459468.7050	532897.6830	83.59	OffChain	OffChain	SET 5/8" IRC "WBQ TRAV"
B22	1424641.8860	549905.5730	68.28	OffChain	OffChain	SET 5/8" IRC "WBQ TRAV"	T1	1410655.6240	556385.2744	72.00	OffChain	OffChain	SET MAG NAIL & DISC AT POINT OF MOBILE TARGET "WBQ TRAV"
B23	1425367.0450	549704.9450	62.89	4651+91.71	6.71' LT	SET 5/8" IRC "WBQ TRAV"	T2	1411825.3380	555433.9977	72.37	OffChain	OffChain	SET MAG NAIL & DISC AT POINT OF MOBILE TARGET "WBQ TRAV"
B24	1426090.3350	549505.4440	62.96	4659+41.95	6.31' LT	SET 5/8" IRC "WBQ TRAV"	T3	1412926.1910	554415.4922	72.37	OffChain	OffChain	SET MAG NAIL & DISC AT POINT OF MOBILE TARGET "WBQ TRAV"
B25	1426826.7710	549335.5910	64.84	4666+97.49	4.77' LT	SET 5/8" IRC "WBQ TRAV"	T4	1414040.9310	553399.4401	72.04	OffChain	OffChain	SET MAG NAIL & DISC AT POINT OF MOBILE TARGET "WBQ TRAV"
B26	1427558.3010	549197.4170	67.74	4674+41.89	7.46' LT	SET 5/8" IRC "WBQ TRAV"	T5	1415293.4350	552634.6726	71.59	OffChain	OffChain	SET MAG NAIL & DISC AT POINT OF MOBILE TARGET "WBQ TRAV"
B27	1428297.6770	549062.9100	72.96	4681+93.40	6.30' LT	SET 5/8" IRC "WBQ TRAV"	T6	1416708.7220	552163.0965	68.92	OffChain	OffChain	SET MAG NAIL & DISC AT POINT OF MOBILE TARGET "WBQ TRAV"
B28	1429033.2270	548945.5360	85.84	4689+38.05	11.03' RT	SET 5/8" IRC "WBQ TRAV"	T7	1418156.1400	551760.5789	72.61	OffChain	OffChain	SET MAG NAIL & DISC AT POINT OF MOBILE TARGET "WBQ TRAV"
B29	1429771.1320	548791.2260	84.00	4696+91.69	7.55' LT	SET 5/8" IRC "WBQ TRAV"	T8	1419602.3850	551359.0062	62.97	OffChain	OffChain	SET MAG NAIL & DISC AT POINT OF MOBILE TARGET "WBQ TRAV"
B30	1430507.7770	548656.4260	70.00	4704+40.57	7.17' LT	SET 5/8" IRC "WBQ TRAV"	T9	1421047.9790	550959.9004	62.88	OffChain	OffChain	SET MAG NAIL & DISC AT POINT OF MOBILE TARGET "WBQ TRAV"
B31	1431248.4160	548520.8130	66.07	4711+93.52	6.87' LT	SET 5/8" IRC "WBQ TRAV"	T10	1422492.2410	550559.2483	62.99	OffChain	OffChain	SET MAG NAIL & DISC AT POINT OF MOBILE TARGET "WBQ TRAV"
B32	1431984.0880	548384.6340	66.14	4719+41.69	8.02' LT	SET 5/8" IRC "WBQ TRAV"	T11	1423939.4100	550158.1307	66.65	OffChain	OffChain	SET MAG NAIL & DISC AT POINT OF MOBILE TARGET "WBQ TRAV"
B33	1432718.5890	548241.2590	66.02	4726+90.48	6.57' LT	SET 5/8" IRC "WBQ TRAV"	T12	1425382.1920	549760.5626	62.89	OffChain	OffChain	SET MAG NAIL & DISC AT POINT OF MOBILE TARGET "WBQ TRAV"
B34	1433440.7400	548039.1680	66.07	4734+41.17	6.34' LT	SET 5/8" IRC "WBQ TRAV"	T13	1426835.5140	549387.4937	65.82	OffChain	OffChain	SET MAG NAIL & DISC AT POINT OF MOBILE TARGET "WBQ TRAV"
B35	1434143.8440	547773.3450	66.48	4741+93.67	6.97' LT	SET 5/8" IRC "WBQ TRAV"	T14	1428309.1380	549117.3447	73.36	OffChain	OffChain	SET MAG NAIL & DISC AT POINT OF MOBILE TARGET "WBQ TRAV"
B36	1434817.7260	547450.8230	66.52	4749+41.55	5.82' LT	SET 5/8" IRC "WBQ TRAV"	T15	1429782.6100	548845.6887	83.71	OffChain	OffChain	SET MAG NAIL & DISC AT POINT OF MOBILE TARGET "WBQ TRAV"
B37	1435462.5200	547068.1640	66.36	4756+92.11	6.21' LT	SET 5/8" IRC "WBQ TRAV"	T16	1431258.4590	548575.0941	65.97	OffChain	OffChain	SET MAG NAIL & DISC AT POINT OF MOBILE TARGET "WBQ TRAV"
B38	1436072.0390	546631.8380	65.96	4764+42.44	5.37' LT	SET 5/8" IRC "WBQ TRAV"	T17	1432733.2840	548294.0661	67.31	OffChain	OffChain	SET MAG NAIL & DISC AT POINT OF MOBILE TARGET "WBQ TRAV"
B39	1436637.8960	546146.3710	65.89	4771+88.70	5.07' LT	SET 5/8" IRC "WBQ TRAV"	T18	1434164.8120	547825.0992	66.95	OffChain	OffChain	SET MAG NAIL & DISC AT POINT OF MOBILE TARGET "WBQ TRAV"
B40	1437160.7720	545611.1640	65.89	4779+37.63	5.51' LT	SET 5/8" IRC "WBQ TRAV"	T19	1435493.5710	547114.1951	67.15	OffChain	OffChain	SET MAG NAIL & DISC AT POINT OF MOBILE TARGET "WBQ TRAV"
B41	1437636.9010	545031.4480	65.72	4786+88.50	5.13' LT	SET 5/8" IRC "WBQ TRAV"	T20	1436677.3820	546184.6002	67.07	OffChain	OffChain	SET MAG NAIL & DISC AT POINT OF MOBILE TARGET "WBQ TRAV"
B42	1438088.8770	544429.2520	65.78	4794+41.44	5.93' LT	SET 5/8" IRC "WBQ TRAV"	T21	1437680.7290	545065.6152	66.93	OffChain	OffChain	SET MAG NAIL & DISC AT POINT OF MOBILE TARGET "WBQ TRAV"
B43	1438539.3420	543831.8740	65.58	4801+89.63	5.04' LT	SET 5/8" IRC "WBQ TRAV"	T22	1438588.3500	543868.8499	66.07	OffChain	OffChain	SET MAG NAIL & DISC AT POINT OF MOBILE TARGET "WBQ TRAV"
B44	1438996.1370	543230.7600	65.91	4809+44.50	4.14' LT	SET 5/8" IRC "WBQ TRAV"	T23	1439535.0080	542721.9080	65.75	OffChain	OffChain	SET MAG NAIL & DISC AT POINT OF MOBILE TARGET "WBQ TRAV"
B45	1439498.9350	542683.0750	65.81	4816+88.05	2.88' LT	SET 5/8" IRC "WBQ TRAV"	T24	1440714.3480	541804.8901	66.28	OffChain	OffChain	SET MAG NAIL & DISC AT POINT OF MOBILE TARGET "WBQ TRAV"
B46	1440076.5550	542197.2060	65.80	4824+42.99	3.13' LT	SET 5/8" IRC "WBQ TRAV"	T25	1441936.0470	540930.4214	73.73	OffChain	OffChain	SET MAG NAIL & DISC AT POINT OF MOBILE TARGET "WBQ TRAV"
B47	1440684.7450	541761.5780	65.61	4831+91.07	2.81' LT	SET 5/8" IRC "WBQ TRAV"	T26	1443129.1940	540021.6663	73.86	OffChain	OffChain	SET MAG NAIL & DISC AT POINT OF MOBILE TARGET "WBQ TRAV"
B48	1441294.6580	541322.6020	69.52	4839+42.52	4.59' LT	SET 5/8" IRC "WBQ TRAV"	T27	1444307.0580	539088.7427	78.98	OffChain	OffChain	SET MAG NAIL & DISC AT POINT OF MOBILE TARGET "WBQ TRAV"
B49	1441903.3540	540886.0190	73.16	4846+91.60	5.15' LT	SET 5/8" IRC "WBQ TRAV"	T28	1445486.2910	538168.8393	79.95	OffChain	OffChain	SET MAG NAIL & DISC AT POINT OF MOBILE TARGET "WBQ TRAV"
B50	1442508.8570	540440.5070	73.96	4854+43.77	7.67' LT	SET 5/8" IRC "WBQ TRAV"	T29	1446780.2140	537435.1020	79.89	OffChain	OffChain	SET MAG NAIL & DISC AT POINT OF MOBILE TARGET "WBQ TRAV"
B51	1443092.9070	539980.2120	73.43	4861+87.40	5.72' LT	SET 5/8" IRC "WBQ TRAV"	T30	1448181.3360	536917.4439	80.20	OffChain	OffChain	SET MAG NAIL & DISC AT POINT OF MOBILE TARGET "WBQ TRAV"
B52	1443680.7290	539514.0110	75.79	4869+37.65	6.05' LT	SET 5/8" IRC "WBQ TRAV"	T31	1449599.6230	536419.2297	80.61	OffChain	OffChain	SET MAG NAIL & DISC AT POINT OF MOBILE TARGET "WBQ TRAV"
B53	1444274.0470	539045.6170	78.46	4876+93.57	4.70' LT	SET 5/8" IRC "WBQ TRAV"	T32	1451012.2120	535922.9715	80.71	OffChain	OffChain	SET MAG NAIL & DISC AT POINT OF MOBILE TARGET "WBQ TRAV"
B54	1444862.0340	538579.7780	79.57	4884+43.73	4.65' LT	SET 5/8" IRC "WBQ TRAV"	T33	1452427.0030	535426.9387	82.65	OffChain	OffChain	SET MAG NAIL & DISC AT POINT OF MOBILE TARGET "WBQ TRAV"

REVISIONS				WBQ DESIGN & ENGINEERING, INC. LICENSE NUMBER: LB 7963 201 NORTH MAGNOLIA AVENUE SUITE 200 ORLANDO, FLORIDA 32801 407-839-4300 HERMAN DANIEL WILLIAMS, III, P.S.M. 6227	STATE OF FLORIDA DEPARTMENT OF TRANSPORTATION			PROJECT SURVEY CONTROL	SHEET NO.
DATE	DESCRIPTION	DATE	DESCRIPTION		ROAD NO.	COUNTY	FINANCIAL PROJECT ID		CTL-11
					91	OSCEOLA	436194-1		

SECONDARY NETWORK CONTROL

POINT NAME	(Y) NORTHING	(X) EASTING	ELEVATION	BASELINE STATION	OFFSET	DESCRIPTION	POINT NAME	(Y) NORTHING	(X) EASTING	ELEVATION	BASELINE STATION	OFFSET	DESCRIPTION
T34	1453844.5880	534929.3593	83.49	4981+91.03	48.89' RT	SET MAG NAIL & DISC AT POINT OF MOBILE TARGET "WBQ TRAV"	T100	1458041.8470	533292.5771	82.02	OffChain	OffChain	SET MAG NAIL & DISC AT POINT OF MOBILE TARGET "WBQ TRAV"
T35	1455264.9140	534431.0092	83.07	OffChain	OffChain	SET MAG NAIL & DISC AT POINT OF MOBILE TARGET "WBQ TRAV"	T101	1457075.8930	534094.7320	97.35	OffChain	OffChain	SET MAG NAIL & DISC AT POINT OF MOBILE TARGET "WBQ TRAV"
T36	1456676.1060	533936.8124	83.00	OffChain	OffChain	SET MAG NAIL & DISC AT POINT OF MOBILE TARGET "WBQ TRAV"	T102	1457640.3740	533727.2662	84.69	OffChain	OffChain	SET MAG NAIL & DISC AT POINT OF MOBILE TARGET "WBQ TRAV"
T37	1458091.2710	533439.3327	83.33	OffChain	OffChain	SET MAG NAIL & DISC AT POINT OF MOBILE TARGET "WBQ TRAV"	T103	1458104.5850	533491.0790	82.03	OffChain	OffChain	SET MAG NAIL & DISC AT POINT OF MOBILE TARGET "WBQ TRAV"
T38	1459491.1680	532959.6204	83.26	OffChain	OffChain	SET MAG NAIL & DISC AT POINT OF MOBILE TARGET "WBQ TRAV"	MT1	1425211.7500	550808.7380	62.06	OffChain	OffChain	FOUND MAGNAIL
T39	1411200.4230	555863.9427	71.01	OffChain	OffChain	SET MAG NAIL & DISC AT POINT OF MOBILE TARGET "WBQ TRAV"	MTA1	1425251.2510	550733.0780	62.40	OffChain	OffChain	FOUND MAGNAIL
T40	1412308.2380	554848.7210	72.25	OffChain	OffChain	SET MAG NAIL & DISC AT POINT OF MOBILE TARGET "WBQ TRAV"	MT2	1425439.9520	550386.5290	63.63	4650+76.85	669.61' RT	FOUND MAGNAIL
T41	1413410.3960	553830.3920	72.17	OffChain	OffChain	SET MAG NAIL & DISC AT POINT OF MOBILE TARGET "WBQ TRAV"	MT3	1425694.0180	549953.0590	78.66	4654+37.42	319.70' RT	FOUND MAGNAIL
T42	1414585.8370	552886.5255	73.84	OffChain	OffChain	SET MAG NAIL & DISC AT POINT OF MOBILE TARGET "WBQ TRAV"	MT4	1425990.2550	549422.1890	83.38	4658+64.37	112.85' LT	FOUND MAGNAIL
T43	1415960.2910	552267.9302	73.10	OffChain	OffChain	SET MAG NAIL & DISC AT POINT OF MOBILE TARGET "WBQ TRAV"	MT5	1426195.4050	549068.4780	74.56	4661+45.98	403.20' LT	FOUND MAGNAIL
T44	1417406.5100	551865.6518	66.18	OffChain	OffChain	SET MAG NAIL & DISC AT POINT OF MOBILE TARGET "WBQ TRAV"	MT6	1426447.8520	548629.7920	66.84	4664+74.58	773.14' LT	FOUND MAGNAIL
T45	1418852.6680	551466.0503	68.52	OffChain	OffChain	SET MAG NAIL & DISC AT POINT OF MOBILE TARGET "WBQ TRAV"	MT7	1426697.3490	548179.8800	68.02	4667+82.94	1164.13' LT	FOUND MAGNAIL
T46	1420297.3350	551065.1282	62.92	OffChain	OffChain	SET MAG NAIL & DISC AT POINT OF MOBILE TARGET "WBQ TRAV"	MT8	1426907.6640	547791.9860	68.59	4670+52.76	1507.39' LT	FOUND MAGNAIL
T47	1421742.6480	550664.5722	63.03	OffChain	OffChain	SET MAG NAIL & DISC AT POINT OF MOBILE TARGET "WBQ TRAV"	MT9	1426886.4070	547779.5250	68.45	4670+34.10	1523.49' LT	FOUND MAGNAIL
T48	1423188.6880	550264.5323	63.01	OffChain	OffChain	SET MAG NAIL & DISC AT POINT OF MOBILE TARGET "WBQ TRAV"	MT10	1426664.3820	548160.9940	67.85	4667+56.79	1188.87' LT	FOUND MAGNAIL
T49	1424631.6530	549864.2405	67.91	OffChain	OffChain	SET MAG NAIL & DISC AT POINT OF MOBILE TARGET "WBQ TRAV"	MT11	1426412.0310	548611.6090	66.61	4664+45.49	798.58' LT	FOUND MAGNAIL
T50	1426081.4030	549462.5271	63.75	4659+44.42	50.07' LT	SET MAG NAIL & DISC AT POINT OF MOBILE TARGET "WBQ TRAV"	MT12	1426165.4330	549052.7350	74.60	4661+21.59	425.73' LT	FOUND MAGNAIL
T51	1427552.1790	549154.8387	67.76	4674+43.55	50.45' LT	SET MAG NAIL & DISC AT POINT OF MOBILE TARGET "WBQ TRAV"	MT13	1425967.4900	549408.3470	83.61	4658+46.29	132.24' LT	FOUND MAGNAIL
T52	1429026.9680	548884.2881	85.51	4689+42.95	50.35' LT	SET MAG NAIL & DISC AT POINT OF MOBILE TARGET "WBQ TRAV"	MT14	1425666.1870	549937.9860	78.69	4654+14.62	297.74' RT	FOUND MAGNAIL
T53	1430501.1900	548613.6856	69.96	4704+41.80	50.40' LT	SET MAG NAIL & DISC AT POINT OF MOBILE TARGET "WBQ TRAV"	MT15	1425424.5400	550377.6070	63.55	4650+64.38	656.90' RT	FOUND MAGNAIL
T54	1431976.9740	548342.4824	66.18	4719+42.30	50.76' LT	SET MAG NAIL & DISC AT POINT OF MOBILE TARGET "WBQ TRAV"	MT16	1425190.0270	550793.7380	62.23	4647+27.29	995.32' RT	FOUND MAGNAIL
T55	1433426.2070	547998.1346	66.21	4734+40.14	49.86' LT	SET MAG NAIL & DISC AT POINT OF MOBILE TARGET "WBQ TRAV"	MT17	1427608.1420	550874.4020	65.30	4671+84.71	1650.86' RT	FOUND MAGNAIL
T56	1434798.2330	547413.6266	66.13	4749+41.92	47.82' LT	SET MAG NAIL & DISC AT POINT OF MOBILE TARGET "WBQ TRAV"	MT18	1427903.2060	550488.3170	67.44	4675+44.68	1324.45' RT	FOUND MAGNAIL
T57	1436045.4870	546597.2667	66.14	4764+42.93	48.95' LT	SET MAG NAIL & DISC AT POINT OF MOBILE TARGET "WBQ TRAV"	MT19	1428211.2110	550096.2160	69.39	4679+18.47	994.46' RT	FOUND MAGNAIL
T58	1437122.0680	545576.0972	65.83	4779+37.91	57.74' LT	SET MAG NAIL & DISC AT POINT OF MOBILE TARGET "WBQ TRAV"	MT20	1428543.0770	549695.6010	68.14	4683+17.26	660.40' RT	FOUND MAGNAIL
T59	1438055.7390	544405.4798	66.05	4794+40.52	46.70' LT	SET MAG NAIL & DISC AT POINT OF MOBILE TARGET "WBQ TRAV"	MT21	1428890.6530	549332.5200	66.94	4687+24.73	366.11' RT	FOUND MAGNAIL
T60	1438962.5120	543203.7922	67.38	4809+44.49	47.24' LT	SET MAG NAIL & DISC AT POINT OF MOBILE TARGET "WBQ TRAV"	MT22	1429219.5210	549026.8680	65.36	4691+03.41	124.92' RT	FOUND MAGNAIL
T61	1440050.6030	542162.9596	67.34	4824+42.34	46.09' LT	SET MAG NAIL & DISC AT POINT OF MOBILE TARGET "WBQ TRAV"	MT23	1429635.3340	548668.1470	63.67	4695+77.20	152.76' LT	FOUND MAGNAIL
T62	1441268.8160	541287.7586	69.87	4839+41.80	47.97' LT	SET MAG NAIL & DISC AT POINT OF MOBILE TARGET "WBQ TRAV"	MT24	1430062.6750	548349.2810	62.41	4700+55.13	389.16' LT	FOUND MAGNAIL
T63	1442483.1670	540406.8053	73.63	4854+44.57	50.04' LT	SET MAG NAIL & DISC AT POINT OF MOBILE TARGET "WBQ TRAV"	MT25	1430453.3890	548098.2720	62.43	4704+84.77	565.43' LT	FOUND MAGNAIL
T64	1443653.2490	539478.5598	76.20	4869+38.13	50.91' LT	SET MAG NAIL & DISC AT POINT OF MOBILE TARGET "WBQ TRAV"	MT26	1430884.7990	547854.6790	62.63	4709+53.09	727.06' LT	FOUND MAGNAIL
T65	1444834.4800	538545.4068	80.09	4884+43.48	48.70' LT	SET MAG NAIL & DISC AT POINT OF MOBILE TARGET "WBQ TRAV"	MT27	1431283.8660	547646.6330	62.52	4713+83.19	859.57' LT	FOUND MAGNAIL
T66	1446069.7740	537683.7248	81.19	4899+44.09	48.08' LT	SET MAG NAIL & DISC AT POINT OF MOBILE TARGET "WBQ TRAV"	MT28	1431253.3820	547557.7160	63.14	4713+69.27	952.53' LT	FOUND MAGNAIL
T67	1447444.7290	537072.1024	80.41	4914+42.69	47.93' LT	SET MAG NAIL & DISC AT POINT OF MOBILE TARGET "WBQ TRAV"	MT29	DESTROYED					FOUND MAGNAIL
T68	1448858.6340	536574.3954	80.49	4929+41.63	49.48' LT	SET MAG NAIL & DISC AT POINT OF MOBILE TARGET "WBQ TRAV"	MT30	1430405.8560	548035.6650	63.33	4704+49.33	635.60' LT	FOUND MAGNAIL
T69	1450271.4830	536078.7690	80.62	4944+38.89	49.42' LT	SET MAG NAIL & DISC AT POINT OF MOBILE TARGET "WBQ TRAV"	MT31	1430024.0300	548290.7400	62.81	4700+27.70	453.72' LT	FOUND MAGNAIL
T70	1451690.0320	535581.5824	81.45	4959+42.05	48.95' LT	SET MAG NAIL & DISC AT POINT OF MOBILE TARGET "WBQ TRAV"	MT32	1429592.8790	548612.3210	63.88	4695+45.53	215.34' LT	FOUND MAGNAIL
T71	1453106.7850	535084.8852	83.72	4974+43.34	48.61' LT	SET MAG NAIL & DISC AT POINT OF MOBILE TARGET "WBQ TRAV"	MT33	1429146.7740	548982.7450	65.65	4690+39.84	68.37' RT	FOUND MAGNAIL
T72	1454519.5360	534579.6041	82.91	OffChain	OffChain	SET MAG NAIL & DISC AT POINT OF MOBILE TARGET "WBQ TRAV"	MT34	1428838.2950	549276.7510	67.39	4686+83.31	301.80' RT	FOUND MAGNAIL
T73	1455935.9780	534091.4889	82.96	OffChain	OffChain	SET MAG NAIL & DISC AT POINT OF MOBILE TARGET "WBQ TRAV"	MT35	1428470.6220	549643.7270	69.05	4682+55.37	596.29' RT	FOUND MAGNAIL
T74	1457352.0920	533593.7743	83.20	OffChain	OffChain	SET MAG NAIL & DISC AT POINT OF MOBILE TARGET "WBQ TRAV"	MT36	1428145.7080	550032.2000	69.95	4678+65.61	919.66' RT	FOUND MAGNAIL
T75	1458762.8490	533098.2737	83.35	OffChain	OffChain	SET MAG NAIL & DISC AT POINT OF MOBILE TARGET "WBQ TRAV"	MT37	1427827.0530	550426.7370	67.38	4674+80.91	1250.12' RT	FOUND MAGNAIL
T76	1412997.6230	553992.8585	93.94	OffChain	OffChain	SET MAG NAIL & DISC AT POINT OF MOBILE TARGET "WBQ TRAV"	MT38	1427538.1250	550817.3490	65.12	4671+26.15	1582.09' RT	FOUND MAGNAIL
T77	1413764.7340	553405.4165	76.64	OffChain	OffChain	SET MAG NAIL & DISC AT POINT OF MOBILE TARGET "WBQ TRAV"	MT39	1434228.8830	550794.1060	74.65	4733+57.32	2857.70' RT	FOUND MAGNAIL
T78	1413399.8460	554156.5649	93.77	OffChain	OffChain	SET MAG NAIL & DISC AT POINT OF MOBILE TARGET "WBQ TRAV"	MT40	1434227.6990	550290.4080	75.10	4734+75.58	2378.19' RT	FOUND MAGNAIL
T79	1413884.8370	55387.4696	75.02	OffChain	OffChain	SET MAG NAIL & DISC AT POINT OF MOBILE TARGET "WBQ TRAV"	MT41	1434225.7010	549810.5920	74.47	4735+97.56	1923.24' RT	FOUND MAGNAIL
T80	1428040.7250	549399.7575	68.83	4678+79.86	278.63' RT	SET MAG NAIL & DISC AT POINT OF MOBILE TARGET "WBQ TRAV"	MT42	1434242.6700	549273.2740	76.15	4737+62.75	1423.17' RT	FOUND MAGNAIL
T81	1428532.0650	549496.2150	69.95	4683+45.72	462.20' RT	SET MAG NAIL & DISC AT POINT OF MOBILE TARGET "WBQ TRAV"	MT43	1434233.2650	548798.2950	76.86	4739+02.67	975.64' RT	FOUND MAGNAIL
T82	1437724.3670	544504.7394	69.89	4791+62.00	251.85' LT	SET MAG NAIL & DISC AT POINT OF MOBILE TARGET "WBQ TRAV"	MT44	1434234.2540	548320.1080	76.91	4740+66.48	531.86' RT	FOUND MAGNAIL
T83	1437358.1310	544052.8033	65.03	4793+03.01	816.20' LT	SET MAG NAIL & DISC AT POINT OF MOBILE TARGET "WBQ TRAV"	MT45	1434243.4390	547877.4740	86.00	4742+40.39	127.61' RT	FOUND MAGNAIL
T84	1436775.9600	543630.9075	64.21	4792+90.21	1535.06' LT	SET MAG NAIL & DISC AT POINT OF MOBILE TARGET "WBQ TRAV"	MT46	1434237.1030	547295.9430	77.55	4744+77.32	405.24' LT	FOUND MAGNAIL
T85	1436224.5360	543190.0744	63.46	4793+11.02	2240.73' LT	SET MAG NAIL & DISC AT POINT OF MOBILE TARGET "WBQ TRAV"	MT47	1434235.1960	546795.6910	71.34	4747+10.62	856.43' LT	FOUND MAGNAIL
T86	1436269.5250	543134.2326	63.34	4793+82.69	2238.34' LT	SET MAG NAIL & DISC AT POINT OF MOBILE TARGET "WBQ TRAV"	MT48	1434247.6550	546289.6900	69.72	4749+90.70	1299.43' LT	FOUND MAGNAIL
T87	1436820.5570	543548.6038	64.45	4793+82.79	1548.90' LT	SET MAG NAIL & DISC AT POINT OF MOBILE TARGET "WBQ TRAV"	MT49	1434255.9830	545795.6850	68.47	4752+94.52	1725.45' LT	FOUND MAGNAIL
T88	1437397.4960	543994.9707	64.99	4793+72.89	819.51' LT	SET MAG NAIL & DISC AT POINT OF MOBILE TARGET "WBQ TRAV"	MT50	1434244.9670	545470.5860	65.78	4754+97.44	2009.35' LT	FOUND MAGNAIL
T89	1437956.3490	544198.9198	69.15	4795+45.85	250.30' LT	SET MAG NAIL & DISC AT POINT OF MOBILE TARGET "WBQ TRAV"	MT51	1434185.4880	545472.0940	65.30	4754+30.15	2039.24' LT	FOUND MAGNAIL
T90	1437831.6940	544386.4237	83.07	4793+21.07	237.21' LT	SET MAG NAIL & DISC AT POINT OF MOBILE TARGET "WBQ TRAV"	MT52	1434195.9640	545792.4410	69.18	4752+31.57	1758.51' LT	FOUND MAGNAIL
T91	1438343.0210	544735.5158	80.09	4793+49.47	381.27' RT	SET MAG NAIL & DISC AT POINT OF MOBILE TARGET "WBQ TRAV"	MT53	1434191.8280	546294.4680	69.61	4749+30.01	1321.65' LT	FOUND MAGNAIL
T92	1438149.2150	545122.6565	66.46	4789+23.58	459.11' RT	SET MAG NAIL & DISC AT POINT OF MOBILE TARGET "WBQ TRAV"	MT54	1434194.0060	546794.5890	70.63	4746+70.16	875.77' LT	FOUND MAGNAIL
T93	1437959.3250	544691.4195	66.43	4791+54.05	48.13' RT	SET MAG NAIL & DISC AT POINT OF MOBILE TARGET "WBQ TRAV"	MT55	1434200.2420	547297.4160	76.90	4744+41.56	419.44' LT	FOUND MAGNAIL
T94	1455933.0510	534067.5779	82.52	OffChain	OffChain	SET MAG NAIL & DISC AT POINT OF MOBILE TARGET "WBQ TRAV"	MT56	1434209.5040	547875.8180	86.19	4742+10.32	112.64' RT	FOUND MAGNAIL
T95	1456691.4800	533565.3177	105.38	OffChain	OffChain	SET MAG NAIL & DISC AT POINT OF MOBILE TARGET "WBQ TRAV"	MT57	1434214.4660	548320.1320	76.71	4740+49.22	524.39' RT	FOUND MAGNAIL
T96	1455975.0920	534210.7941	82.30	OffChain	OffChain	SET MAG NAIL & DISC AT POINT OF MOBILE TARGET "WBQ TRAV"	MT58	1434204.0950	548797.1510	76.57	4738+78.59	964.05' RT	FOUND MAGNAIL
T97	1456905.0170	534136.6942	101.48	OffChain	OffChain	SET MAG NAIL & DISC AT POINT OF MOBILE TARGET "WBQ TRAV"	MT59	1434202.3030	549273.0210	76.16	4737+30.29	1409.01' RT	FOUND MAGNAIL
T98	1456878.2450	533500.1620											

SECONDARY NETWORK CONTROL

POINT NAME	(Y) NORTHING	(X) EASTING	ELEVATION	BASELINE STATION	OFFSET	DESCRIPTION	POINT NAME	(Y) NORTHING	(X) EASTING	ELEVATION	BASELINE STATION	OFFSET	DESCRIPTION
MT62	1434197.6540	550793.8690	74.45	4733+35.02	2848.08' RT	FOUND MAGNAIL							
MT63	1440789.7840	543254.0460	72.49	4823+75.72	1268.22' RT	FOUND MAGNAIL							
MT64	1440277.0800	543248.1020	69.61	4818+89.20	938.27' RT	FOUND MAGNAIL							
MT65	1439772.1150	543261.2040	69.75	4814+58.68	597.12' RT	FOUND MAGNAIL							
MT66	1439326.2010	543122.0400	84.49	4812+42.98	175.44' RT	FOUND MAGNAIL							
MT67	1438869.3510	542851.5980	79.03	4811+46.29	346.32' LT	FOUND MAGNAIL							
MT68	1438454.8570	542585.9580	65.18	4810+85.46	834.05' LT	FOUND MAGNAIL							
MT69	1438047.2690	542351.0880	64.55	4810+17.33	1297.48' LT	FOUND MAGNAIL							
MT70	1437626.8260	542096.4640	64.62	4809+63.20	1784.20' LT	FOUND MAGNAIL							
MT71	1437225.7160	541834.0200	64.82	4809+28.68	2261.26' LT	FOUND MAGNAIL							
MT72	1437194.2000	541884.8790	64.27	4808+86.04	2254.36' LT	FOUND MAGNAIL							
MT73	1437611.9960	542118.8420	64.02	4809+42.81	1781.70' LT	FOUND MAGNAIL							
MT74	1438034.8030	542372.4520	64.29	4809+97.41	1293.55' LT	FOUND MAGNAIL							
MT75	1438437.9780	542613.9850	65.63	4810+57.24	828.94' LT	FOUND MAGNAIL							
MT76	1438856.1450	542874.9900	79.66	4811+21.43	341.10' LT	FOUND MAGNAIL							
MT77	1439311.4900	543149.4160	84.64	4812+11.77	182.62' RT	FOUND MAGNAIL							
MT78	1439771.1320	543297.8880	70.00	4814+28.27	621.79' RT	FOUND MAGNAIL							
MT79	1440279.2990	543290.6550	69.78	4818+57.05	971.40' RT	FOUND MAGNAIL							
MT80	1440789.1260	543292.8460	72.05	4823+44.91	1298.78' RT	FOUND MAGNAIL							
MT81	1443534.3740	541949.8460	76.26	4853+37.44	1813.25' RT	FOUND MAGNAIL							
MT82	1443537.1340	541423.6200	75.83	4856+36.29	1401.48' RT	FOUND MAGNAIL							
MT83	1443538.8370	540952.8510	76.47	4859+29.99	1033.56' RT	FOUND MAGNAIL							
MT84	1443524.0890	540460.0250	77.33	4862+24.50	638.13' RT	FOUND MAGNAIL							
MT85	1443489.1000	539947.2900	92.97	4865+15.50	214.53' RT	FOUND MAGNAIL							
MT86	1443489.3620	539405.4080	93.04	4868+52.24	210.02' LT	FOUND MAGNAIL							
MT87	1443509.9630	538951.7140	77.84	4871+50.15	552.82' LT	FOUND MAGNAIL							
MT88	1443508.1120	538448.4770	78.00	4874+61.23	948.40' LT	FOUND MAGNAIL							
MT89	1443508.2370	537938.3580	78.76	4877+78.13	1348.14' LT	FOUND MAGNAIL							
MT90	1443508.7570	537447.3600	79.91	4880+83.47	1732.65' LT	FOUND MAGNAIL							
MT91	1443449.4230	537448.2740	80.07	4880+36.40	1768.78' LT	FOUND MAGNAIL							
MT92	1443448.2880	537940.7880	78.84	4877+29.63	1383.47' LT	FOUND MAGNAIL							
MT93	1443441.0430	538452.2530	78.05	4874+06.32	987.09' LT	FOUND MAGNAIL							
MT94	1443441.0400	538949.7490	77.75	4870+97.35	597.17' LT	FOUND MAGNAIL							
MT95	1443424.2630	539418.6060	95.06	4867+93.02	240.11' LT	FOUND MAGNAIL							
MT96	1443424.7870	539951.4010	96.68	4864+62.54	177.81' RT	FOUND MAGNAIL							
MT97	1443449.3200	540466.3000	77.78	4861+62.00	596.61' RT	FOUND MAGNAIL							
MT98	1443473.9630	540955.0770	76.44	4858+77.76	995.01' RT	FOUND MAGNAIL							
MT99	1443472.0920	541422.9320	75.74	4855+85.74	1360.54' RT	FOUND MAGNAIL							
MT100	1443470.7750	541947.8510	76.23	4852+99.80	1773.16' RT	FOUND MAGNAIL							

HORIZONTAL AND VERTICAL CONTROL - WGI NAD83 (1990) AS PUBLISHED

POINT NAME	(Y) NORTHING	(X) EASTING	ELEVATION	BASELINE STATION	OFFSET	DESCRIPTION
AT111	1460475.1670	532603.3910	94.52	OFFCHAIN	OFFCHAIN	2" MAG NAIL WITH DISK STAMPED LB7055
BLC01	1453927.8940	534758.9970	78.19	4983+23.17	84.29 LT	3 1/2" ALUMINUM DISK IN CONCRETE MONUMENT STAMPED BLC 01
BLC02	1458908.2790	533202.8910	79.93	5035+37.87	96.16 RT	3 1/2" ALUMINUM DISK IN CONCRETE MONUMENT STAMPED BLC 02

HORIZONTAL AND VERTICAL CONTROL - WBQ NAD83 (2011)

POINT NAME	(Y) NORTHING	(X) EASTING	ELEVATION	BASELINE STATION	OFFSET	DESCRIPTION
AT111	1460475.1020	532603.4980	94.52	OFFCHAIN	OFFCHAIN	2" MAG NAIL WITH DISK STAMPED LB7055
BLC01	1453928.0290	534759.0440	78.19	4983+23.28	84.20 LT	3 1/2" ALUMINUM DISK IN CONCRETE MONUMENT STAMPED BLC 01
BLC02	1458908.3300	533203.0090	79.93	5035+37.88	96.29 RT	3 1/2" ALUMINUM DISK IN CONCRETE MONUMENT STAMPED BLC 02

REVISIONS				WBQ DESIGN & ENGINEERING, INC. LICENSE NUMBER: LB 7963 201 NORTH MAGNOLIA AVENUE SUITE 200 ORLANDO, FLORIDA 32801 407-839-4300 HERMAN DANIEL WILLIAMS, III, P.S.M. 6227	STATE OF FLORIDA DEPARTMENT OF TRANSPORTATION			PROJECT SURVEY CONTROL	SHEET NO.
DATE	DESCRIPTION	DATE	DESCRIPTION		ROAD NO.	COUNTY	FINANCIAL PROJECT ID		CTL-13
					91	OSCEOLA	436194-1		

PROPERTY, RIGHT OF WAY & SECTIONAL MONUMENTS

POINT NAME	(Y) NORTHING	(X) EASTING	BASELINE STATION	OFFSET	DESCRIPTION	POINT NAME	(Y) NORTHING	(X) EASTING	BASELINE STATION	OFFSET	DESCRIPTION
GB7	1443440.2290	540641.6540	4860+45.97	728.41' RT	5/8 IR NOID	RW194	1436419.8510	545685.6600	4773+51.03	491.45' LT	MAG NAIL AND DISC PCP LB966
GB8	1443547.6080	540641.0170	4861+30.53	794.59' RT	NAIL&DISC 4X4	RW195	1436444.4320	545922.2160	4771+98.33	303.42' LT	MAG NAIL AND DISC PCP LB966
GB9	1443580.6700	540006.2810	4865+50.64	317.64' RT	6X6 SSP R/W	RW196	1435153.3000	548482.4030	4747+69.14	1063.07' RT	MAG NAIL AND DISC PCP LB7194
GB10	1444819.3110	538875.0210	4882+24.01	200.23' RT	4X4 PRM LS 3421	RW197	1435041.6960	548561.1180	4746+49.10	1083.51' RT	MAG NAIL AND DISC PCP LB7194
GB11	1448492.4190	536990.5840	4924+55.41	222.00' RT	1.25 IP LS 2005 LB 5073	RW198	1434997.5790	548261.8240	4747+33.75	795.92' RT	MAG NAIL AND DISC PCP LB7194
GB12	1448487.3940	536970.7830	4924+57.23	201.65' RT	1.25 IP LS 2005 LB 5073	RW199	1434891.1740	548336.9530	4746+16.09	815.99' RT	MAG NAIL AND DISC PCP LB7194
GB13	1447805.7700	537431.9820	4916+61.36	411.19' RT	FND NL DISC LS2005 LB5073	RW200	1434745.5950	547948.3060	4746+53.62	402.93' RT	MAG NAIL AND DISC PCP LB7194
GB14	1447735.2450	537435.4890	4915+93.65	391.15' RT	FND NL DISC LS2005 LB5073	RW201	1434765.9960	547933.8720	4746+77.21	399.02' RT	MAG NAIL AND DISC PCP LB7194
GB15	1447725.3860	537407.1500	4915+93.73	361.14' RT	FND 1.25 IP LS 2005 LB 5073	RW202	1434356.0240	548145.3190	4742+37.18	418.14' RT	4X4 PRM PSM 4236
GB16	1447207.1530	537625.9420	4910+17.53	390.91' RT	FND NL DISC LS2005 LB5073	RW203	1434355.0560	547916.4220	4743+25.22	208.21' RT	4X4 NOID
GB17	1446264.1160	537859.5290	4900+25.76	200.25' RT	FND 1/2 IRC LB4937	RW204	1434358.4430	547905.5540	4743+32.57	199.67' RT	4X4 PRM PSM 4236
GBCM1	1438326.2603	543293.2829	4788+91.01	699.89' RT	FOUND 6" X 6" CMON SSP R/W	RW205	1434372.2310	547899.1190	4743+47.44	199.43' RT	4X4 TOP BROKEN
GBCM2	1438579.7344	544844.5773	4794+02.01	633.05' RT	FOUND 4" X 4" CMON RLS935 CE4379	RW206	1434376.5900	547866.7800	4743+64.32	171.73' RT	4X4 NOID
GBCM3	1438584.3502	544951.3834	4793+19.39	700.89' RT	FOUND 4" X 4" CMON RLS935 CE4379	RW207	1434444.2350	547866.8000	4744+24.57	199.79' RT	4X4 PRM LB6393
GBCM4	1429855.9876	548579.0568	4698+10.32	200.51' LT	FOUND 4" X 4" CMON WITH "SRD R/W" STAMPED ON THE SIDE	RW208	1434358.0820	547916.4720	4743+27.90	209.49' RT	4X4 NOID
GBCM5	1430866.8194	547917.8925	4709+23.99	668.13' LT	FOUND 4" X 4" CMON TOP SEVERELY BROKEN	RW209	1434771.9300	547707.3730	4747+80.74	199.38' RT	4X4 NOID
GBCM6	1430904.8234	547896.9451	4709+65.15	681.87' LT	FOUND 4" X 4" CMON TOP BROKEN IN POOR CONDITION	RW210	1435535.8950	547664.0180	4754+40.38	535.25' RT	PCP LB7194
GBIRC1	1430561.0209	548449.3358	4705+27.19	200.70' LT	FOUND 5/8" IRON ROD AND CAP STAMPED "LB966"	RW211	1435321.0890	547776.5000	4752+12.28	522.29' RT	PCP LB7194
GBPIP1	1430906.1673	548386.4823	4708+78.01	200.15' LT	FOUND 5/8" IRON ROD NO ID	RW212	1435389.4850	547857.7770	4752+29.71	626.88' RT	PCP LB7194
GBPIP2	1430906.2188	548386.5278	4708+78.05	200.09' LT	FOUND 1/4" IRON ROD NO ID	RW213	1435147.9220	547914.4540	4750+06.69	558.02' RT	PCP LB7194
RW100	1427620.5270	545932.9210	4680+89.82	3207.04' LT	5X5 TOP BROKEN	RW214	1435140.3870	547923.1210	4749+96.59	562.03' RT	PCP LB7194
RW102	1427611.8780	548577.8160	4676+03.38	607.25' LT	PK PCP LS4044	RW215	1435140.7150	547988.8890	4749+67.59	620.04' RT	PCP LB7194
RW103	1427631.7860	548990.6400	4675+48.36	197.62' LT	SSP 6X6	RW216	1435563.4530	547249.6240	4756+74.77	199.44' RT	4X4 PRM PSM 4236
RW104	1428482.3180	548450.4140	4684+82.51	575.26' LT	80D NAIL W/WASHER NOID	RW217	1436483.8700	542874.8470	4797+18.07	2225.73' LT	4X4 PRM LB3897
RW105	1428999.4240	548451.9060	4689+90.84	480.35' LT	80D NAIL W/WASHER NOID	RW218	1436483.9840	542874.6890	4797+18.27	2225.73' LT	5/8 IR NOID
RW106	1429232.3320	548452.6260	4692+19.78	437.56' LT	80D NAIL W/WASHER NOID	RW219	1436454.4460	543006.1540	4795+95.41	2170.39' LT	HWA LB3270
RW107	1429494.3220	548363.4700	4694+93.57	477.90' LT	MAGNAIL NOID	RW220	1436460.6290	542980.6650	4796+19.51	2180.75' LT	MAG NL & DISC LB 3270
RW108	1429478.8130	548343.4250	4694+81.94	500.42' LT	5/8 IR NOID	RW221	1436480.7190	543122.2440	4795+18.38	2079.65' LT	5/8 IR NOID
RW109	1429442.4080	548426.4290	4694+31.13	425.36' LT	5/8 WJS LB5419	RW222	1436583.8920	543075.0200	4796+18.10	2025.53' LT	3X3 NOID
RW110	1429558.9930	548426.2460	4695+45.83	404.48' LT	5/8 WJS LB5419	RW223	1436643.7550	542995.0600	4797+17.99	2025.69' LT	3X3 NOID
RW111	1429754.7270	548426.5390	4697+38.29	368.82' LT	5/8 WJS LB5419	RW224	1436912.0730	543056.3570	4798+30.13	1774.34' LT	5/8 IR NOID
RW112	1430386.3040	547991.0700	4704+38.16	682.99' LT	5/8 WJS LB5419	RW225	1436746.0880	543290.0870	4795+43.57	1766.67' LT	5/8 HWA LB3270
RW113	1430318.5130	547789.3450	4704+07.94	893.65' LT		RW226	1436707.1030	543345.5060	4794+75.84	1764.56' LT	5/8 HWA LB3270
RW126	1426144.8220	549290.6080	4660+45.11	200.26' LT		RW227	1436688.3470	543372.0160	4794+43.38	1763.63' LT	5/8 CT SRM LB7121
RW127	1432894.8890	545939.5340	4736+17.17	2170.14' LT	7X7 29 30 31 32	RW228	1436808.2370	543475.2690	4794+32.83	1605.76' LT	6X6 SSP R/W LEANING EAST .80
RW129	1427818.2250	549485.0020	4676+42.40	322.29' RT	5/8 ACCURIGHT LB4475	RW229	1437152.7380	543732.8470	4794+33.80	1175.61' LT	6X6 SSP R/WLEANING NE .45
RW130	1428295.1840	549520.4530	4681+05.10	443.35' RT	5/8 ACCURIGHT LB4475	RW230	1437340.7620	543899.9540	4794+13.13	924.91' LT	3X3 NOID
RW131	1428444.6230	549563.8550	4682+44.24	513.04' RT	1/2 IR NOID	RW231	1437568.2710	544068.5080	4794+15.01	641.77' LT	6X6 SSP R/W
RW132	1428368.1320	549697.3430	4681+44.88	630.51' RT	5/8 IR NOID	RW232	1438158.4760	544014.1740	4798+12.93	202.52' LT	6X6 SSP R/W
RW133	1428732.5030	549869.4270	4684+72.16	865.60' RT	4X4 NOID	RW233	1436012.3060	543501.2690	4789+34.00	2226.52' LT	5/8"IRONROD CAP ILLEGIBLE
RW134	1428463.1210	549869.5000	4682+07.20	816.99' RT	4X4 JOHNSTON LB966	RW234	1436196.5500	543432.9170	4790+99.31	2120.26' LT	4X4 NOID
RW135	1428644.2370	549669.9900	4684+21.39	653.50' RT	4X4 TOP BROKEN	RW235	1436327.0570	543457.1290	4791+58.33	2001.37' LT	4X4 NOID
RW136	1428930.2240	549377.1020	4687+55.59	417.11' RT	4X4 JOHNSTON RLS935 CE4379	RW236	1436632.8600	543671.3150	4791+70.75	1628.23' LT	4X4 NOID
RW137	1429223.1750	549101.9640	4690+93.44	199.44' RT	4X4 JOHNSTON RLS935 CE4379	RW237	1436542.1310	543831.2190	4789+88.41	1604.73' LT	4X4 NOID
RW138	1430560.0520	548099.3450	4705+89.48	545.10' LT	4X4 TOP BROKEN	RW238	1438284.3950	544515.2950	4794+87.90	199.14' RT	6X6 SSP R/W
RW140	1427814.7760	549466.0110	4676+42.44	302.99' RT	5/8 ACCURIGHT LB4475	RW239	1441435.3690	542018.5770	4836+48.26	641.81' RT	5/8 LB 3225
RW149	1426983.7570	549309.7290	4668+53.34	0.89' LT	1/2 IR NOID	RW240	1441484.8280	541951.9220	4837+27.30	616.49' RT	1/2 IR NOID
RW151	1427616.0000	549193.5750	4674+96.16	0.88' LT	1/2 IR NOID	RW241	1441488.9240	542605.0580	4833+49.88	1149.55' RT	5/8 IR NOID
RW154	1428599.4800	549012.6910	4684+96.14	1.07' LT	5/8 DRMP LB2648	RW242	1441440.6080	542926.4580	4831+23.26	1382.52' RT	5/8"IRONROD CAP ILLEGIBLE
RW173	1430255.9490	551226.6230	4697+25.28	2475.74' RT	3.5X3.5 NOID WITH 3/8 REBAR	RW243	1441490.7340	542916.0640	4831+70.05	1403.30' RT	4X4 NOID
RW176	1432899.3400	551219.0570	4723+15.29	2946.05' RT	FND5"X5"CMON W/DISC 2.5" STAMPED OSCEOLA COUNTY FLORIDA 1962 28/29/32/33	RW244	1442676.2380	543038.9080	4840+61.66	2194.21' RT	NAIL & DISC GARY HUNT SURVEY CORNER
RW179	1435528.6300	545930.6980	4764+45.54	894.42' LT	5X5 W/2.5"DISC STAMPED30	RW245	1442699.7220	542779.2620	4842+32.10	1996.94' RT	NAIL & DISC LS 3137
RW180	1435621.4780	546473.6470	4761+69.99	405.95' LT	CENTER LINE PI	RW246	1442649.4080	542729.5950	4842+20.18	1927.25' RT	NAIL & DISC LS 3137
RW181	1435678.4120	546471.9810	4762+18.97	373.43' LT	MAG NAIL AND DUSC PCP LB966	RW247	1442439.7960	542789.1810	4840+15.13	1853.47' RT	NAIL & DISC LS 3137
RW182	1435764.9330	546441.3930	4763+10.32	345.85' LT	HOLE FOR PCP	RW248	1442339.7900	542789.7670	4839+33.53	1795.65' RT	NAIL & DISC LS 3137
RW183	1435827.1030	546393.6120	4763+92.02	345.86' LT	MAG NAIL AND DUSC PCP LB966	RW249	1439387.5870	543088.7290	4813+11.07	198.66' RT	6X6 SSP R/W
RW184	1435845.2460	546342.8070	4764+39.57	374.76' LT	MAG NAIL AND DUSC PCP LB966	RW250	1439153.4580	543365.2540	4809+35.60	200.61' RT	4X4W/DISC NO ID
RW185	1435830.1840	546277.4040	4764+69.62	435.46' LT	MAG NAIL AND DUSC PCP LB966	RW251	1439047.7510	543500.9730	4807+57.37	200.25' RT	4X4W/DISC NO ID
RW186	1435843.8390	546230.6020	4765+11.62	463.61' LT	MAG NAIL AND DUSC PCP LB966	RW252	1447982.8380	536722.7790	4920+63.23	199.40' LT	4X4 PRM LB 4475
RW187	1435995.6110	546081.2060	4767+36.08	482.89' LT	MAG NAIL AND DUSC PCP LB966	RW253	1447945.8840	536617.2730	4920+63.29	311.20' LT	4X4 PRM LB 4475
RW188	1436095.1020	545983.3100	4768+83.70	492.49' LT	MAG NAIL AND DISC PCP LB966	RW254	1447266.3870	536974.4770	4913+03.87	199.09' LT	4X4 PRM LB 4475
RW189	1436146.4380	545956.4580	4769+43.37	478.80' LT	MAG NAIL AND DISC PCP LB966	RW255	1446765.9390	537169.9240	4907+80.14	198.80' LT	4X4 PRM LB 4475
RW190	1436153.9240	545955.2680	4769+50.14	474.73' LT	MAG NAIL AND DISC PCP LB966	RW256	1446144.5780	537470.4070	4901+07.22	198.59' LT	4X4 PRM LB 4475
RW191	1436441.0730	545922.7580	4771+95.41	305.32' LT	MAG NAIL AND DISC PCP LB966	RW257	1448602.0450	536505.6230	4927+19.41	199.32' LT	4X4 PRM 4629
RW192	1436485.3200	545869.2950	4772+66.86	313.76' LT	MAG NAIL AND DISC PCP LB966	RW258	1450531.5800	535775.9620	4947+81.70	249.05' LT	NAIL&DISC 2623 SURVEY POINT
RW193	1436474.9860	545731.6670	4773+58.86	420.02' LT	MAG NAIL AND DISC PCP LB966	RW259	1450490.2050	535657.8540	4947+81.76	374.19' LT	NAIL&DISC 2623 SURVEY POINT

REVISIONS				WBQ DESIGN & ENGINEERING, INC. LICENSE NUMBER: LB 7963 201 NORTH MAGNOLIA AVENUE SUITE 200 ORLANDO, FLORIDA 32801 407-839-4300 HERMAN DANIEL WILLIAMS, III, P.S.M. 6227	STATE OF FLORIDA DEPARTMENT OF TRANSPORTATION			PROJECT SURVEY CONTROL	SHEET NO. CTL-14
DATE	DESCRIPTION	DATE	DESCRIPTION		ROAD NO.	COUNTY	FINANCIAL PROJECT ID		
					91	OSCEOLA	436194-1		

PROPERTY, RIGHT OF WAY & SECTIONAL MONUMENTS

POINT NAME	(Y) NORTHING	(X) EASTING	BASELINE STATION	OFFSET	DESCRIPTION	POINT NAME	(Y) NORTHING	(X) EASTING	BASELINE STATION	OFFSET	DESCRIPTION
RW260	1452302.7310	535092.7390	4966+79.16	307.39' LT	5/8" IR NOID	RWD17	1443521.8520	537139.1560	4882+85.14	1966.08' LT	FOUND 4" X 4" CMON NO ID
RW261	1443352.6460	539526.8610	4866+69.66	199.74' LT	6X6 SSP R/W	RWD18	1443521.8220	537362.6560	4881+46.31	1790.93' LT	FOUND 4" X 4" CMON NO ID
RW262	1443425.8760	538125.5140	4875+97.35	1252.60' LT	MAG NAIL&DISC OCEO PSM 5966	RWD19	1443521.0030	537462.7230	4880+83.53	1713.00' LT	FOUND 4" X 4" CMON TOP BROKEN
RW263	1443480.7540	538125.1870	4876+40.56	1218.78' LT	MAG NAIL&DISC OCEO PSM 5966	RWD20	1443520.5590	537539.4280	4880+35.54	1653.16' LT	FOUND 6" X 6" CMON SRD R/W
RW264	1443546.1210	538774.9790	4872+88.25	668.89' LT	4X4 TOP BROKEN	RWD21	1443521.2160	537793.7950	4878+78.08	1453.39' LT	FOUND 4" X 4" CMON NAIL AND DISC SURVEY PT 2623
RW265	1443581.1070	539344.7370	4869+61.83	200.60' LT	6X6 SSP R/W	RWD22	1443445.9180	540800.2090	4859+51.96	856.21' RT	FOUND 5/8" IRON ROD AND CAP LB966
RW266	1434313.8000	547492.3930	4744+63.34	194.79' LT	6" X 6" CMON SSP R/W	RWD23	1443438.8590	542595.7490	4849+39.63	2278.72' RT	FOUND 5/8" IRON ROD AND CAP FHR LB6605
RW267	1434307.0730	547245.9180	4745+66.24	420.51' LT	6" X 6" CMON TOP BROKEN	RWD24	1443448.8650	542595.7310	4849+47.77	2284.54' RT	FOUND PK NAIL AND DISC PRM LS4714
RW268	1434274.6840	547016.1010	4746+42.13	641.41' LT	3" X 3" CMON NOID	RWD25	1443438.1350	542780.4910	4848+31.35	2428.40' RT	FOUND 5/8" IRON ROD AND CAP ILLEGIBLE
RW269	1434271.8840	546995.8860	4746+49.06	660.79' LT	5/8" IR NOID	RWD26	1443436.9590	543132.7390	4846+25.05	2713.92' RT	FOUND X-CUT
RW270	1434256.9630	546893.9240	4746+83.73	758.81' LT	4" X 4" CMON TOP BROKEN	RWD27	1443387.2060	543182.6900	4845+55.50	2725.50' RT	FOUND 5/8" IRON ROD AND CAP LB4475
RW271	1434257.1050	546816.1090	4747+22.18	828.35' LT	1.25" IP NOID	RWD28	1443133.7580	543184.1260	4843+48.74	2578.92' RT	FOUND 5/8" IRON ROD AND CAP LB4475
RW272	1434278.6810	546616.3020	4748+45.46	996.43' LT	5/8" IRC LB 966	RWD29	1443134.7920	542929.3370	4844+98.11	2372.50' RT	FOUND 5/8" IRON ROD NO ID
RW273	1434278.1770	546425.2070	4749+47.02	1165.65' LT	5/8" IR NOID	RWD30	1443167.7290	542929.5220	4845+24.76	2391.85' RT	FOUND 5/8" IRON ROD AND CAP FHR LB6605
RW274	1434278.1170	546315.2190	4750+07.83	1262.45' LT	5/8" IRC LB 966	RWD31	1443168.2800	542779.5100	4846+12.66	2270.29' RT	FOUND 5/8" IRON ROD AND CAP FHR LB6605
RWA1	1434210.1450	547564.0920	4743+36.56	172.59' LT	SET MAG NAIL AND DISC STAMPED "WBQ TRAV"	RWD32	1443701.4530	543249.0170	4847+72.16	2962.58' RT	FOUND 5/8" IRON ROD AND CAP LB966
RWA100	1434164.2500	547098.4820	4744+96.26	614.96' LT	FOUND 4" X 4" CMON RLS935 CE4379	RWD33	1443581.2790	542973.6660	4848+35.04	2668.80' RT	FOUND PK NAIL AND DISC JOHNSTON LB966
RWA101	1434142.8910	547248.4930	4744+08.12	487.85' LT	FOUND 6" X 6" CMON SSP R/W	RWD34	1443576.4090	542946.2480	4848+47.07	2643.69' RT	FOUND MAG NAIL AND DISC FLA LB6569
RWA102	1434015.3510	547249.9140	4742+83.75	538.77' LT	FOUND 4" X 4" CMON LB966	RWD35	1443567.8680	542888.5400	4848+73.77	2591.82' RT	FOUND 1/2" IRON ROD AND CAP LB4475
RWA103	1434144.5160	547997.9300	4741+04.84	199.82' RT	FOUND 5/8" IRON ROD AND CAP LB966	RWD36	1443563.8960	542808.5850	4849+17.15	2524.54' RT	FOUND NAIL AND DISC ACCURIGHT LB4475
RWA104	1434144.7090	548144.7340	4740+50.80	335.64' RT	FOUND 5/8" IRON ROD AND CAP LB966	RWD37	1443565.2350	542457.8720	4851+22.69	2240.37' RT	FOUND 1/2" IRON ROD AND CAP LB966
RWA105	1434189.1310	548446.4610	4739+82.92	632.07' RT	FOUND 5/8" IRON ROD AND CAP EBI LB7209	RWD38	1443565.8970	542282.7100	4852+07.64	2098.71' RT	FOUND 5/8" IRON ROD AND CAP EBI LB7652
RWA106	1434293.7480	548549.2700	4740+37.17	766.51' RT	FOUND 4" X 4" CMON PRM PSM4236	RWD39	1443567.1860	541944.8060	4853+59.51	1829.25' RT	FOUND 4" X 4" CMON NO ID
RWA107	1434268.3200	548549.4960	4740+15.44	757.18' RT	FOUND 4" X 4" CMON TOP BROKEN	RWD40	1443567.8430	541754.7930	4854+54.68	1680.11' RT	FOUND 5/8" IRON ROD AND CAP FHR LB6605
RWA108	1434247.6410	548564.9750	4739+92.51	763.84' RT	FOUND 5/8" IRON ROD AND CAP CBL LB6824	RWD41	1443636.1680	542187.8460	4852+90.49	2064.36' RT	FOUND 5/8" IRON ROD NO ID
RWA109	1431441.2250	548288.4360	4714+21.98	199.89' LT	FOUND 4" X 4" CMON RLS935 CE4379	RWD42	1443771.9740	542209.1220	4853+59.96	2163.62' RT	FOUND 5/8" IRON ROD AND CAP EBI LB7652
RWA111	1431171.6620	548337.7360	4711+47.94	200.12' LT	FOUND 5/8" IRON ROD AND CAP HANSON WALTER INC	RWD43	1443815.8740	542258.7080	4853+63.17	2229.69' RT	FOUND 4" X 4" CMON NO ID
RWA112	1434142.1080	547564.7230	4742+72.72	199.56' LT	FOUND 6" X 6" CMON SSP R/W	RWD44	1443857.4550	542258.6210	4853+86.81	2255.12' RT	FOUND 5/8" IRON ROD NO ID
RWA113	1437200.8260	541894.5140	4808+83.54	2243.20' LT	FOUND 5/8" IR NOID	RWD45	1443815.1680	542458.5040	4852+76.54	2388.28' RT	FOUND 4" X 4" CMON NO ID
RWA114	1437824.8250	542287.0270	4809+44.46	1510.45' LT	FOUND 1/2" IRON ROD AND CAP LB1788	RWD46	1443570.1960	541080.6370	4858+75.21	1153.19' RT	FOUND 5/8" IRON ROD AND CAP FHR LB6605
RWA115	1437831.1840	542277.8550	4809+53.27	1511.25' LT	FOUND 5/8" IRON ROD AND CAP PLS4200	RWD47	1443560.5260	540792.0070	4860+46.88	920.96' RT	FOUND 5/8" IRON ROD AND CAP LELSI LB6846
RWA116	1438478.2070	542683.9910	4810+32.58	753.23' LT	FOUND 4" X 4" CMON H-S INC LB935	RWD48	1434161.8810	549910.9330	4735+21.90	1997.46' RT	FOUND 5/8" IRON ROD AND CAP LB7048
RWA117	1438256.5750	542537.2460	4810+08.42	1017.57' LT	FOUND 4" X 4" CMON 2.5" BRASS DISC STAMPED LB935	RWD49	1434216.8820	549895.6050	4735+68.15	2000.70' RT	FOUND MAG NAIL AND DISC OCEO PSM5966
RWA118	1443520.3800	538449.8240	4874+70.01	939.72' LT	FOUND 1/2" IRON ROD AND CAP "POLARIS"	RWD50	1434256.8400	549895.4940	4735+98.79	2013.66' RT	FOUND 4" X 4" CMON NO ID
RWA119	1443520.4160	538125.0090	4876+71.76	1194.28' LT	FOUND 4" X 4" CMON NOID	RWD51	1434271.8860	549894.8100	4736+10.48	2017.97' RT	FOUND 5/8" IRON ROD NO ID
RWA120	1443425.6850	538455.4260	4873+92.31	994.14' LT	FOUND 1/2" IRON ROD AND CAP ILLEGIBLE	RWD52	1434257.4890	550186.4610	4735+23.76	2289.10' RT	FOUND 1/2" IRON ROD NO ID
RWA121	1443425.9380	538193.7440	4875+55.02	1199.09' LT	FOUND MAG NAIL AND DISC JOHNSTON SURVEYING LB966	RWD53	1434257.0910	550041.1270	4735+60.70	2151.39' RT	FOUND 5/8" IRON ROD NO ID
RWA122	1443581.2280	539345.4220	4869+61.49	199.98' LT	FOUND 6" X 6" CMON SSP R/W	RWD54	1434258.2380	550477.2830	4734+52.56	2565.21' RT	FOUND 5/8" IRON ROD AND CAP BERTRAND RLS4087
RWA123	1437477.1740	544190.6500	4792+62.63	641.25' LT	FOUND 6" X 6" CMON SSP R/W	RWD55	1434258.8260	550768.5090	4733+84.58	2842.39' RT	FOUND 5/8" IRON ROD AND CAP BERTRAND RLS4088
RWA124	1429855.8410	548578.9900	4698+10.19	200.61' LT	FOUND 6" X 6" CMON SSP R/W	RWD56	1434258.3820	550803.3590	4733+76.30	2875.45' RT	FOUND 5/8" IRON ROD NO ID
RWA125	1431439.4740	547619.5450	4715+41.13	858.09' LT	FOUND 4" X 4" CMON JOHNSTON RLS935 CE4379	RWD100	1434319.8240	549214.9020	4738+42.42	1395.58' RT	FOUND 1/2" IRON ROD AND CAP ILLEGIBLE
RWA126	1430905.9280	548386.4290	4708+77.79	200.24' LT	FOUND 5/8" IRON ROD NO ID	RWD101	1434448.5120	549214.6170	4739+45.52	1441.76' RT	FOUND 5/8" IRON ROD AND CAP FHR LB6605
RWA127	1430731.5680	547996.4290	4707+76.77	615.33' LT	FOUND 4" X 4" CMON JOHNSTON RLS935 CE4379	RWD102	1434276.4590	551217.2990	4732+97.64	3275.79' RT	FOUND HOLE WITH BROKEN NAIL
RWA128	1431054.4530	547814.8000	4711+27.16	735.62' LT	FOUND 1/2" IRON ROD AND CAP GEO MARKS LB6894	RWD103	1434274.5620	551529.1650	4732+31.30	3573.54' RT	FOUND MAG NAIL AND DISC PCP LB6723
RWA129	1425896.0070	549358.2410	4657+90.87	199.61' LT	FOUND 6" X 6" CMON SSP R/W	RWD104	1434163.7560	551419.9150	4731+77.97	3437.24' RT	FOUND 5/8" IRON ROD NO ID
RWA130	1425617.1280	549851.4530	4653+90.44	201.26' RT	FOUND 6" X 6" CMON SSP R/W	RWD105	1434164.6390	551545.3070	4731+53.56	3557.84' RT	FOUND 4" X 4" CMON JOHNSTON LB966
RWA131	1424722.3020	550098.8240	OffChain	OffChain	FOUND 6" X 6" CMON SSP R/W	RWD106	1434164.3070	551674.9170	4731+28.00	3682.26' RT	FOUND 5/8" IRON ROD AND CAP ILLEGIBLE
RWA132	1424258.5270	549813.7240	OffChain	OffChain	FOUND 6" X 6" CMON SSP R/W	RWD107	1434164.1280	551875.0310	4730+89.75	3874.65' RT	FOUND 4" X 4" CMON JOHNSTON LB966
RWA133	1423850.8910	549924.5910	OffChain	OffChain	FOUND 6" X 6" CMON SSP R/W	RWD108	1434167.1500	552204.9550	4730+31.36	4193.24' RT	FOUND 5/8" IRON ROD NO ID
RWA134	1424389.8340	550191.1780	OffChain	OffChain	FOUND 6" X 6" CMON SSP R/W	RWD109	1434167.3210	552534.9070	4729+74.00	4511.68' RT	FOUND 5/8" IRON ROD NO ID
RWA135	1425958.8910	549756.5550	4657+45.14	201.04' RT	FOUND 6" X 6" CMON SSP R/W	RWD110	1438149.9920	543281.4800	4803+93.65	649.37' LT	FOUND 4" X 4" CMON WITH 2.5" BRASS DISC
RWD2	1443523.4680	535476.3510	4891+52.24	3282.49' LT	FOUND 4" X 4" CMON NO ID	AAACM1	1438726.7512	543259.3095	4807+57.79	201.54 LT	RECOVERED 4" X 4" CMON WITH BRASS DISC STAMPED H-S INC. LB935
RWD3	1443483.4010	535476.5660	4891+29.38	3305.62' LT	FOUND PK NAIL AND DISC JOHNSTON LB966	AAACM3	1443379.6115	540016.0361	4863+86.99	200.42 RT	RECOVERED 6" X 6" CMON SSP R/W
RWD4	1443443.3320	535476.4110	4891+06.76	3329.15' LT	FOUND 4" X 4" CMON NO ID	AAACM4	1443581.7637	539856.0483	4866+44.79	200.57 RT	RECOVERED 6" X 6" CMON SSP R/W
RWD5	1443523.0170	536138.6740	4888+69.27	2750.51' LT	FOUND 4" X 4" CMON NO ID	AAACM6	1437632.0977	544716.4250	4789+35.31	201.59 LT	RECOVERED 6" X 6" CMON SSP R/W
RWD6	1443522.9210	536539.1800	4886+58.59	2435.67' LT	FOUND 6" X 6" CMON SRD R/W						
RWD7	1443442.4960	536567.3140	4885+78.08	2463.56' LT	FOUND MAG NAIL AND DISC PRM LB6846						
RWD8	1443442.8660	536138.4310	4888+22.91	2799.80' LT	FOUND MAG NAIL AND DISC PRM LB6846						
RWD9	1443431.6930	537999.9180	4876+79.91	1347.43' LT	FOUND X-CUT						
RWD10	1443431.4170	537749.9840	4878+34.91	1543.49' LT	FOUND X-CUT						
RWD11	1443431.1950	537625.7560	4879+11.89	1641.00' LT	FOUND 5/8" IRON ROD AND CAP LB966						
RWD12	1443431.2550	537575.7340	4879+43.00	1680.17' LT	FOUND 5/8" IRON AND CAP OCEO PSM5566						
RWD13	1443431.2930	537423.7770	4880+37.40	1799.24' LT	FOUND 5/8" IRON ROD AND CAP ILLEGIBLE						
RWD14	1443430.4660	537139.1000	4882+13.55	2022.88' LT	FOUND 5/8" IRON ROD NO ID						
RWD15	1443369.1960	536837.5210	4883+52.82	2297.30' LT	FOUND NAIL AND DISC JOHNSTON PRM LB966						
RWD16	1443522.0440	537030.8420	4883+52.56	2050.86' LT	FOUND 4" X 4" CMON NO ID						

REVISIONS				WBQ DESIGN & ENGINEERING, INC. LICENSE NUMBER: LB 7965 201 NORTH MAGNOLIA AVENUE SUITE 200 ORLANDO, FLORIDA 32801 407-839-4300 HERMAN DANIEL WILLIAMS, III, P.S.M. 6227	STATE OF FLORIDA DEPARTMENT OF TRANSPORTATION			PROJECT SURVEY CONTROL	SHEET NO.
DATE	DESCRIPTION	DATE	DESCRIPTION		ROAD NO.	COUNTY	FINANCIAL PROJECT ID		CTL-15
					91	OSCEOLA	436194-1		