

**County Population
1980-2019**

County	Turnpike Interchanges and Facilities	Population (000)					Average Annual Growth ('80-'19)
		1980	1990	2000	2010	2019	
Miami-Dade	HEFT (0 through 35), 3X	1,626	1,937	2,253	2,496	2,812	1.4%
Broward	HEFT (39, 43, 47), 49, 53, 54, 58, 62, 66, 67, 69, 71, Sawgrass Expressway	1,018	1,255	1,623	1,748	1,920	1.6
Palm Beach	75, 81, 86, 93, 97, 99, 107,109, 116	577	864	1,131	1,320	1,448	2.4
Martin	133	64	101	127	146	159	2.4
St. Lucie	138, 142, 152	87	150	193	278	309	3.3
Osceola	193, 240, 242, 244, 249, SCE, Western Beltway, Part C	49	108	172	269	371	5.3
Orange	251, 254, 259, 265, 267, 272, Beachline West/East, SCE, Western Beltway, Part C	471	677	896	1,146	1,386	2.8
Lake	278, 285, 289, 296	105	152	211	297	357	3.2
Sumter	304, 309	24	32	53	93	129	4.4
Seminole	Seminole Expressway	180	288	365	423	472	2.5
Polk	Polk Parkway	322	405	484	602	691	2.0
Hillsborough	"Veterans Expressway, Suncoast Parkway, I-4 Connector"	647	834	999	1,229	1,445	2.1
Pasco	Suncoast Parkway	194	281	345	465	527	2.6
Hernando	Suncoast Parkway	45	101	131	173	188	3.7
Okeechobee	Ticket System	20	30	36	40	42	1.9
Indian River	Ticket System	60	90	113	138	155	2.5
Brevard	Beachline East	273	399	476	543	594	2.0
Clay	First Coast Expressway	67	106	141	191	215	3.0
Duval	First Coast Expressway	571	673	779	866	971	1.4
Turnpike Service Area		6,400	8,483	10,528	12,463	14,191	2.1
Total State (67 Counties)		9,747	12,938	15,982	18,801	21,209	2.0
Percent (19 of 67 Counties)		65.7%	65.6%	65.9%	66.3%	66.9%	

Source: U.S. Bureau of the Census and University of Florida, Bureau of Economic and Business Research.

**State and County Population
1990-2030 Forecast**

Year	Turnpike Service Area (19 Counties)		Total State (67 Counties)		Percent 17 of 67 Counties
	Population (000)	Average Annual Growth*	Population (000)	Average Annual Growth*	
1990 Census	8,483	—	12,938	—	65.6%
2000 Census	10,528	2.2%	15,982	2.1%	65.9
2010 Census	12,463	2.0	18,801	1.9	66.3
2019 Estimate	14,191	1.8	21,209	1.7	66.9
2020 Forecast	14,428	1.8	21,556	1.7	66.9
2025 Forecast	15,530	1.8	23,131	1.7	67.1
2030 Forecast	16,438	1.7	24,426	1.6	67.3

Source: U.S. Bureau of the Census and University of Florida, Bureau of Economic and Business Research.
Forecast: BEBR Bulletin 186, January 2020.

* Growth is compounded annually based on the 1990 Census data.

Comparison of Growth Indices

Index	Number (000)					Average Annual Growth ('80-'19)
	1980	1990	2000	2010	2019	
State Population	9,747	12,938	15,982	18,801	21,209	2.0%
Fuel Consumption (Highway Use)	5,246,579	7,031,708	8,906,286	9,611,976	11,269,500	2.0
Employment	4,026	6,061	7,569	8,141	10,010	2.4
Number of Tourists	20,046	40,970	72,800	82,300	131,423	4.9
Turnpike Traffic (Transactions)	55,463	121,378	379,132	639,426	931,730	7.5

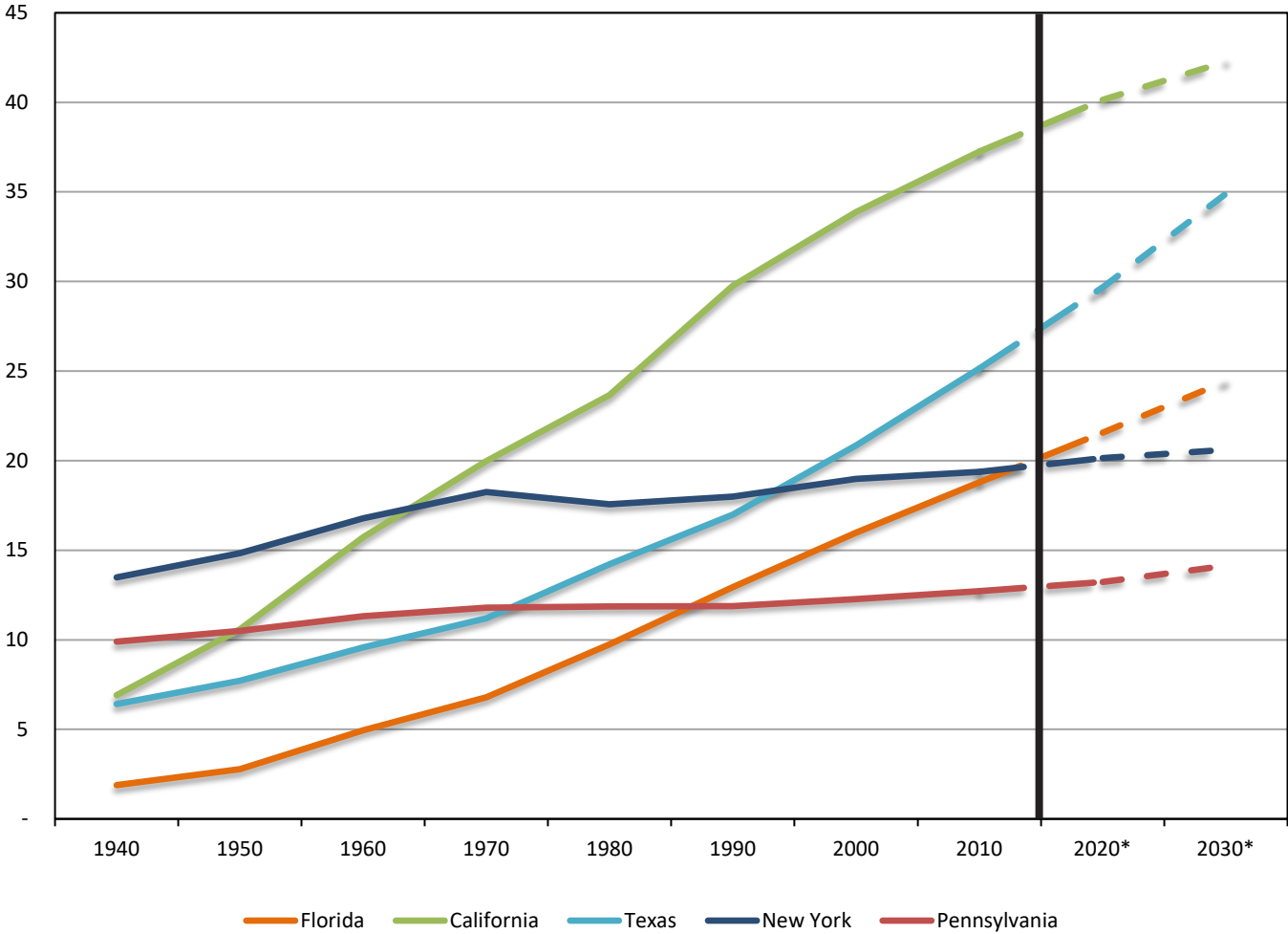
Sources: U.S. Bureau of the Census, University of Florida, Bureau of Economic and Business Research, Florida Commission on Tourism, Visit Florida, Florida Department of Transportation and Florida Research and Economic Database.

**Comparison of Home Ownership, Housing Units and Households
Among Five Most Populous States**

	Home Ownership Rate* (Percent)	Total Housing Units (Millions)	Total Households (Millions)
Pennsylvania	68.4%	5.7	5.1
Florida	66.2	9.7	7.9
Texas	61.9	11.3	10.0
California	54.9	14.4	13.2
New York	53.5	8.4	7.4

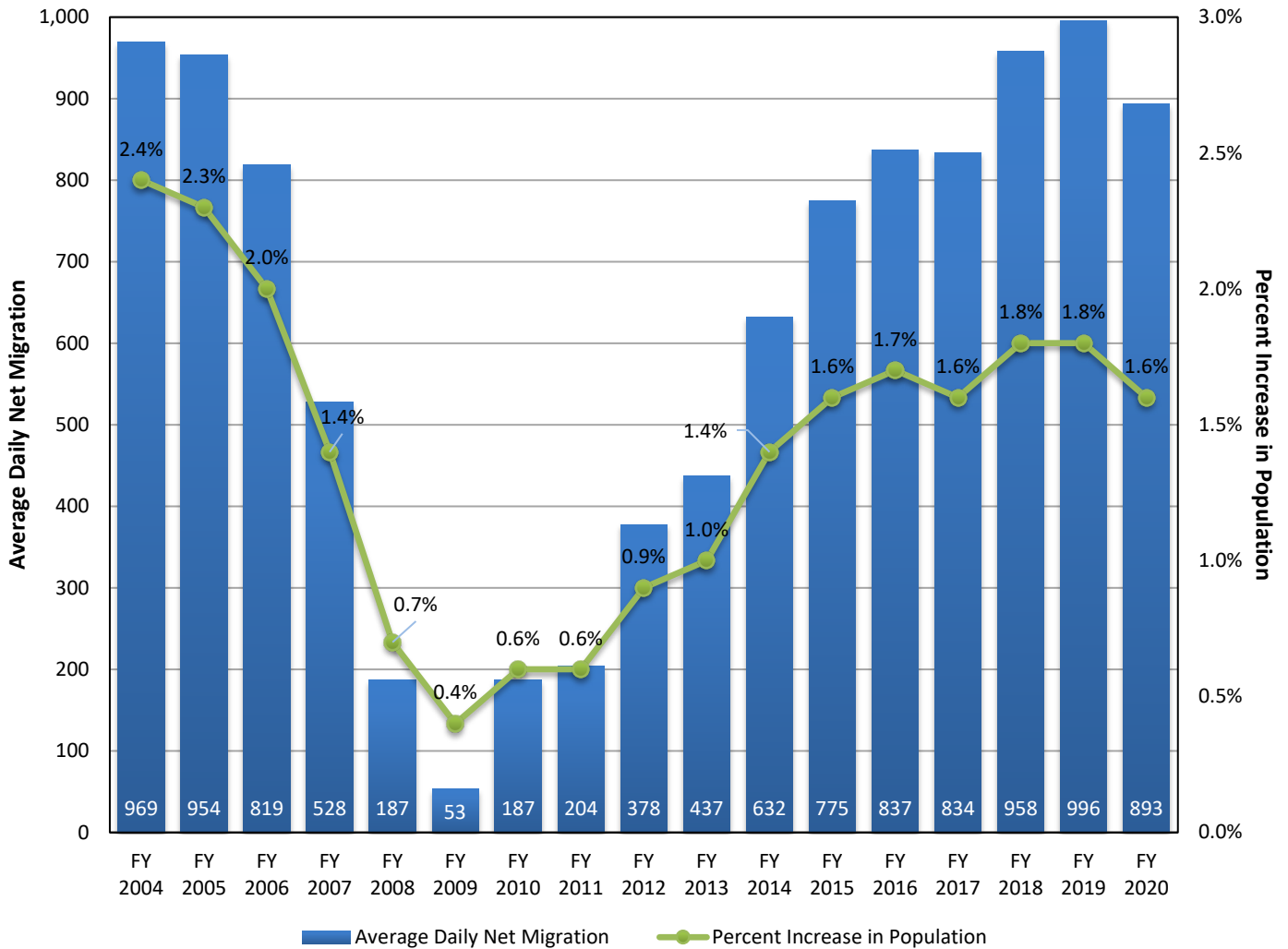
(*) Reflects percent of occupied housing units that are owner-occupied.
Source: U.S. Census Bureau, American Community Survey 2019

Comparative Population Growth in Five Most Populous States (In millions)



Source: University of Florida, Bureau of Economic and Business Research (BEER) and individual state websites.
 Florida Forecast: BEBR Bulletin 186, January 2020
 * Estimate

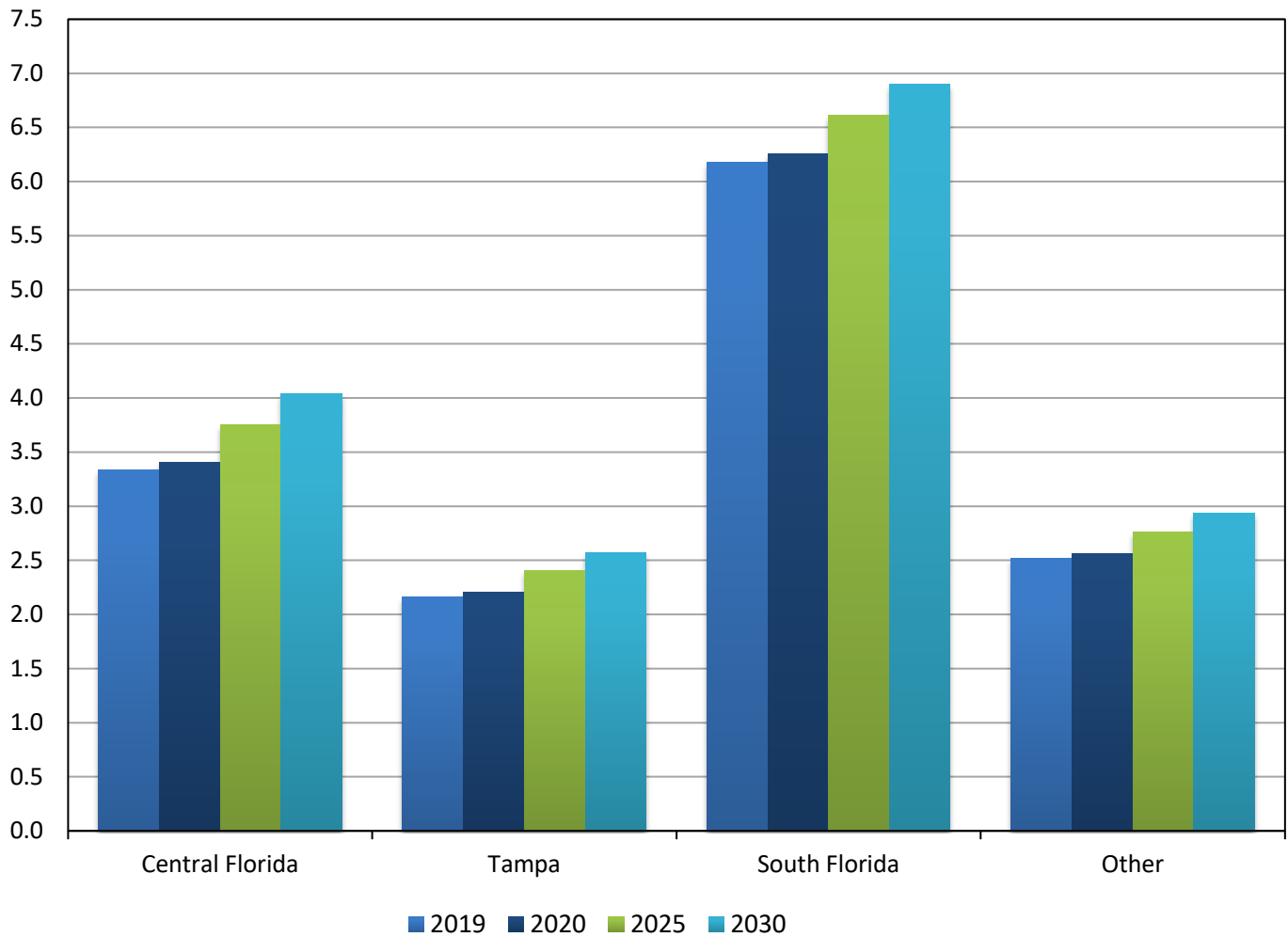
Florida Population Trend



Source: Florida Demographic Estimating Conference July 13, 2020.

Florida's population is gradually increasing due in large part to strengthening economy. As the graph shows, Florida's annual population growth reached 1.6 percent in FY 2015 and remained mostly at that level through FY 2019, albeit a significant decline from the levels seen prior to the Recession. Correspondingly, the average daily net migration (excluding deaths and births), which peaked at nearly a thousand residents in 2004, has gradually rebounded nearly to similar levels in recent years.

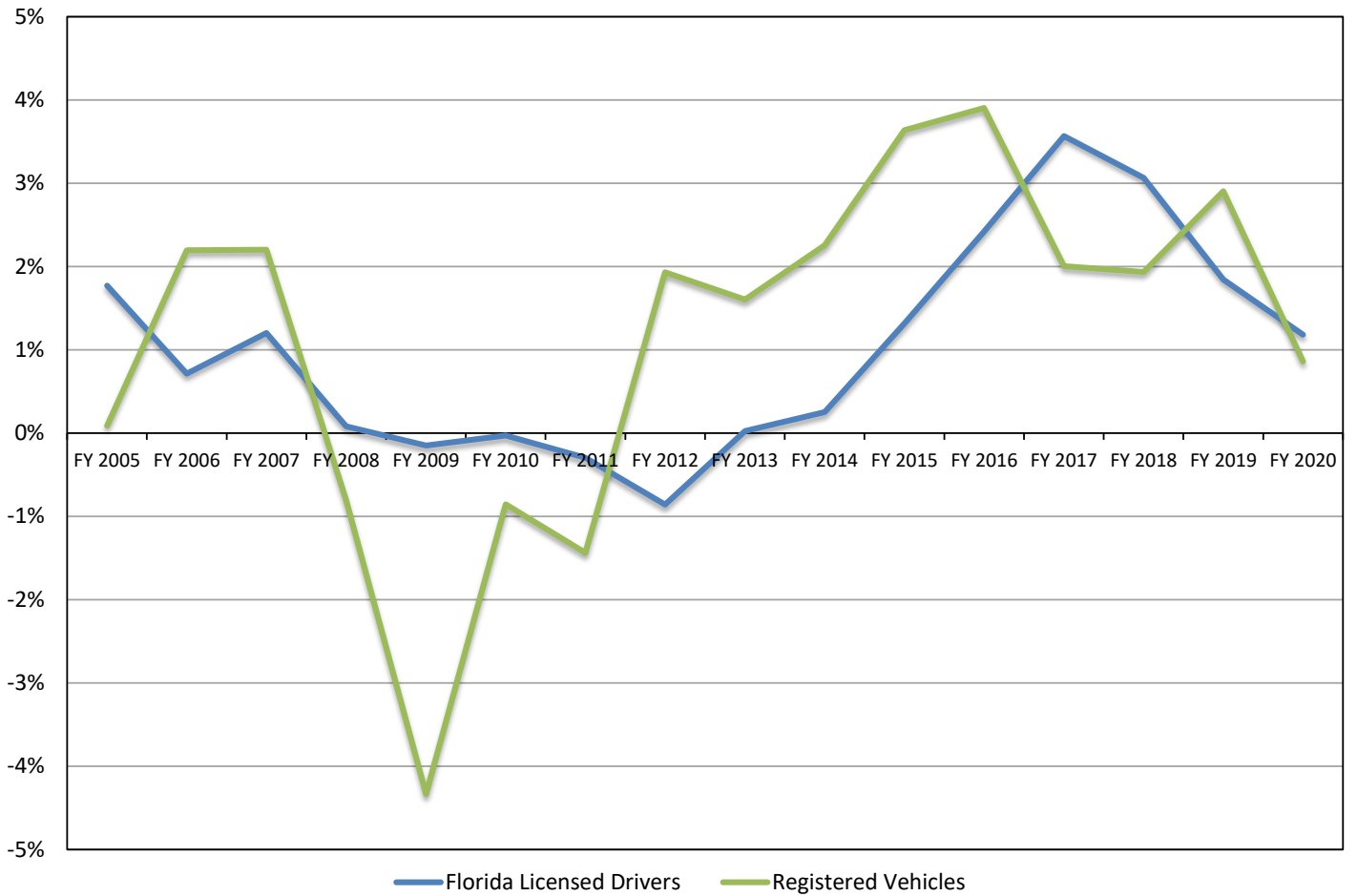
Current and Future Population Estimates Regions Served By Turnpike (In Millions)



Source: U.S. Bureau of Census and University of Florida, Bureau of Economic and Business Research (BEBR).
Forecast: BEBR Volume 53, Bulletin 186, January 2020.

The state's population is expected to exceed 24 million in 2030. In fact, as the graph depicts, all the population centers that the Turnpike serves are expected to grow. South and Central Florida are expected to add the bulk of the increase with nearly 720 thousand and 703 thousand, respectively, by 2030, followed by the Tampa region with approximately 407 thousand.

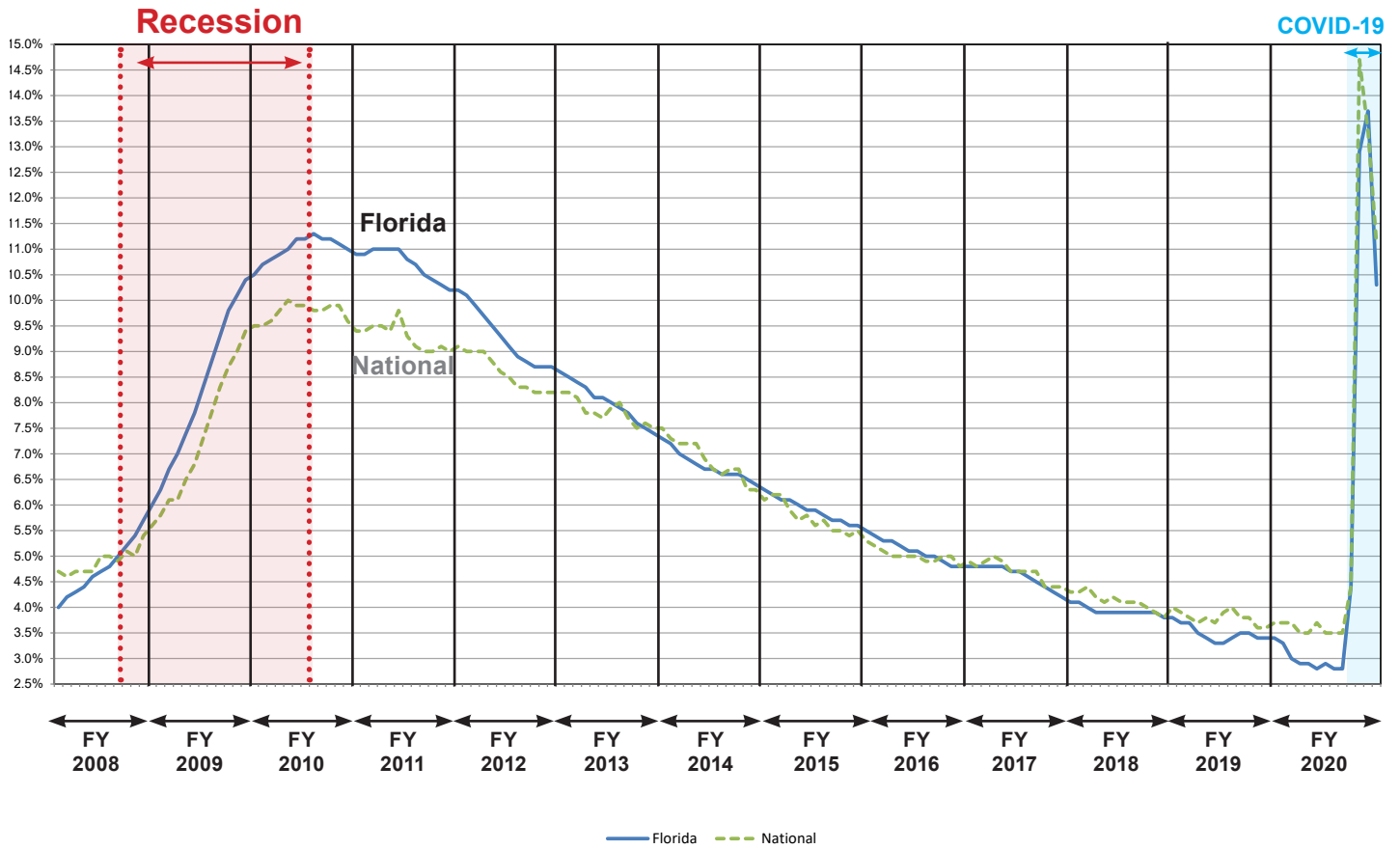
Year-Over-Year Percent Change: Florida Licensed Drivers and Registered Vehicles



Source: Florida Department of Highway Safety and Motor Vehicles.

The population growth has a direct impact on the number of driver's licenses issued and vehicles registered in the state. The year-over-year growth rates of Florida licensed drivers have picked up in recent years after declining during recession due to slow down in population. Similarly, the growth rate of vehicles registered in the state has picked up starting in FY 2012 after a significant decline during the recession. During FY 2020, licensed drivers in Florida grew approximately one percent to 17.6 million, while registered vehicles increased nearly one percent to 17.3 million.

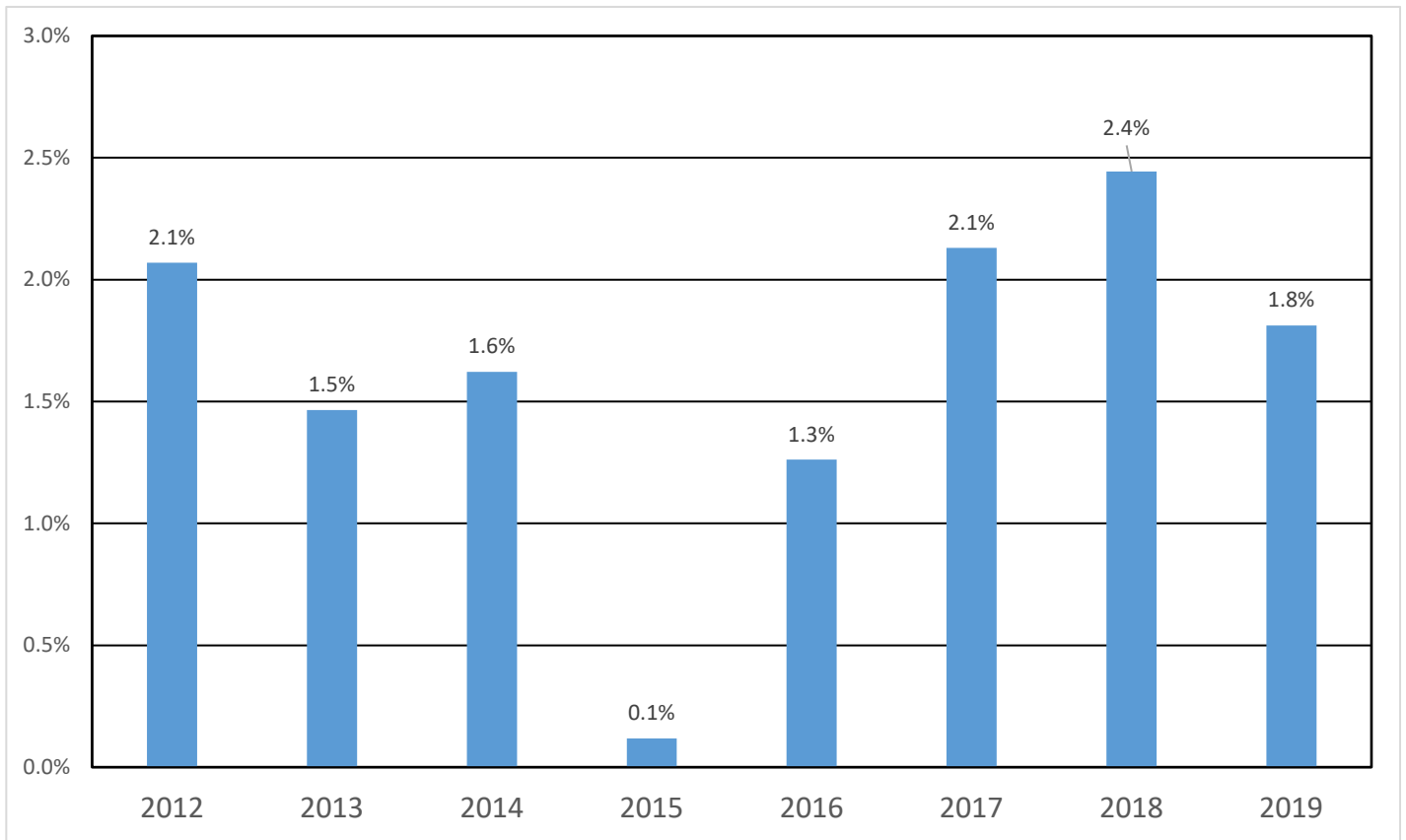
Unemployment Rate



Source: Bureau of Labor Statistics

This graph displays the rise in the unemployment rate in Florida, along with the national rate since the beginning of FY 2008. After peaking at 11.3 percent in January 2010, Florida's unemployment rate gradually declined to 2.8 percent in February 2020, lower than the national average of 3.5 percent. However, due to the COVID-19 pandemic, unemployment rose dramatically in Florida and across the nation. At 10.3 percent in June 2020, Florida's unemployment was lower than the national average of 11.1 percent. However, with the re-opening of the state, Florida's unemployment continues to diminish with December 2020 unemployment at 6.1 percent.

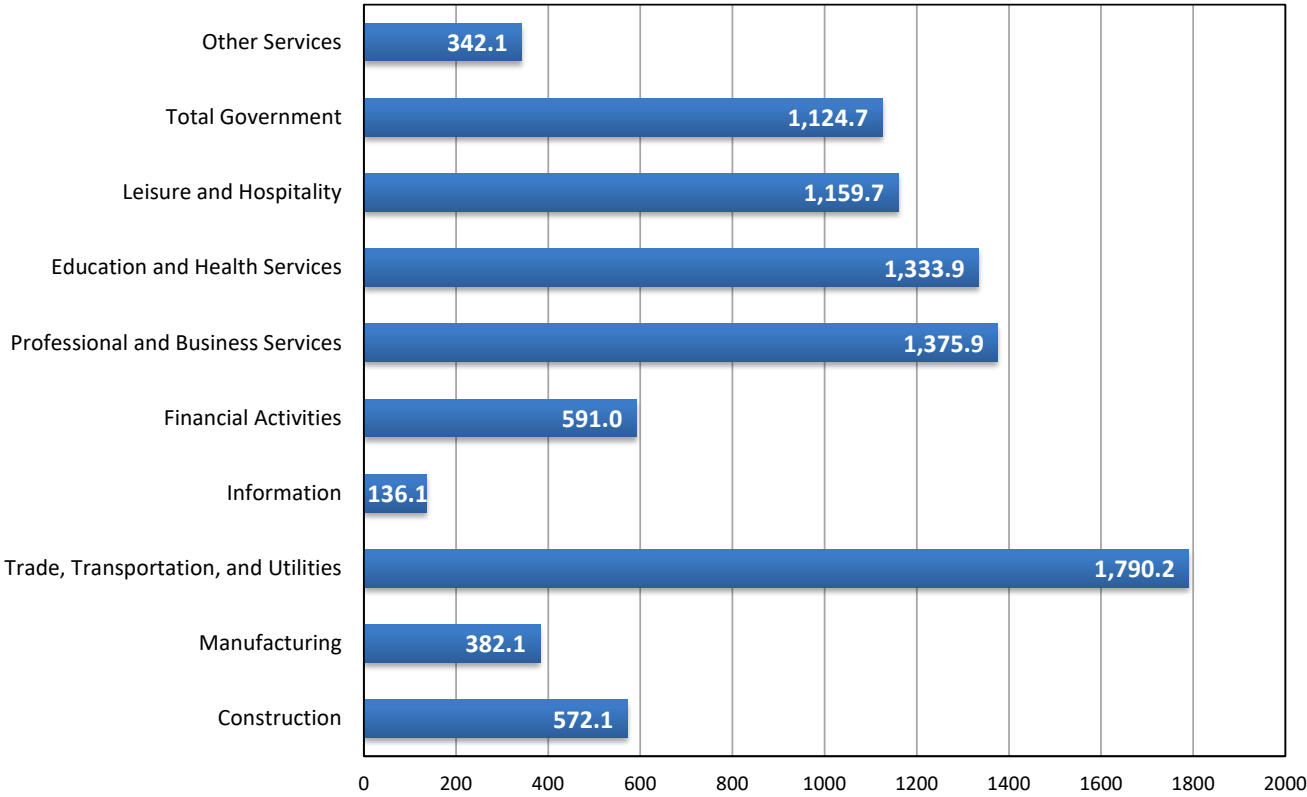
Historical Percent Change in Consumer Price Index



Source: Bureau of Labor Statistics.

An additional economic indicator is the measure of inflation experienced by consumers for their daily living expenses as expressed by the Consumer Price Index (CPI). This graph depicts historical year-over-year increase in annual CPI. The low annual CPI increase in calendar year 2015 was due in large part to modest increase in energy and food prices.

**Non-Agricultural Employment in Florida 2020
(In Thousands)**

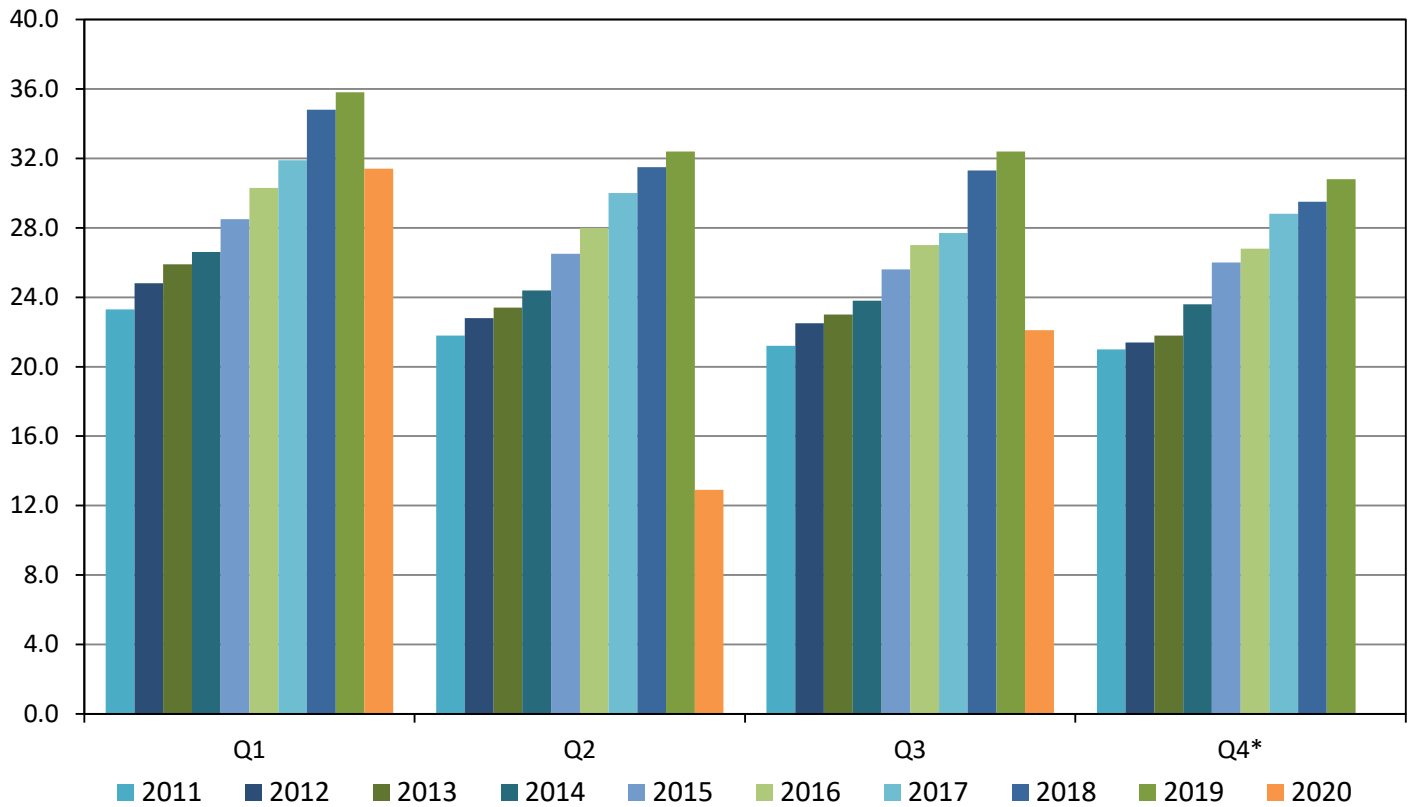


Source: Florida Department of Economic Opportunity, August 2020.

Florida has a diverse industry base, which to some extent, mitigates the impact from the downturn in certain industry sectors. It has a vibrant leisure and hospitality industry, and professional and business services industry, complemented by international trade.

The graph above presents the Non-Agriculture Employment in the state by the North American Industry Classification System (NAICS). In FY 2020, the trade, transportation and utilities industries employed 1.8 million of the workforce and 20 percent of total employment; followed by professional and business services; education and health services; and leisure and hospitality. The construction sector showed the highest growth rate at nearly four percent, while the leisure and hospitality sector saw the highest decline of 6.6 percent compared to the preceding year due to the pandemic.

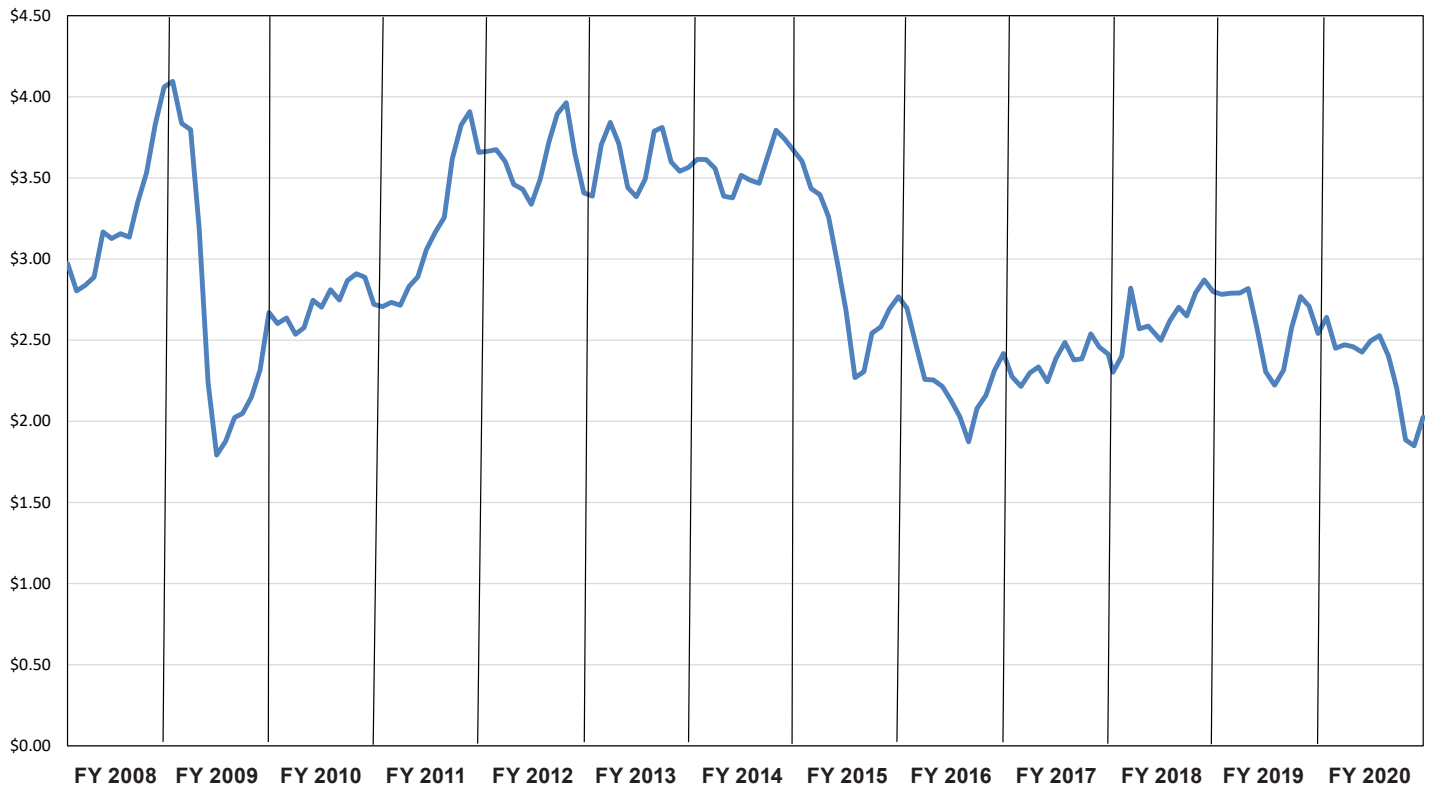
Florida Tourists (In Millions)



Source: visitfloridamediablog.com
 * 2020 data not yet available

Tourism is a vital component of Florida's economy. This graph shows the number of Florida visitors by quarter over the past ten calendar years. All quarters show an increasing trend except for calendar year 2020, reflective of the impact of the COVID-19 pandemic. Florida experienced restrictions in travel leading to notable decline in all three quarters, particularly in the second quarter at 60 percent, with a significant improvement in the third quarter at a 32 percent decrease.

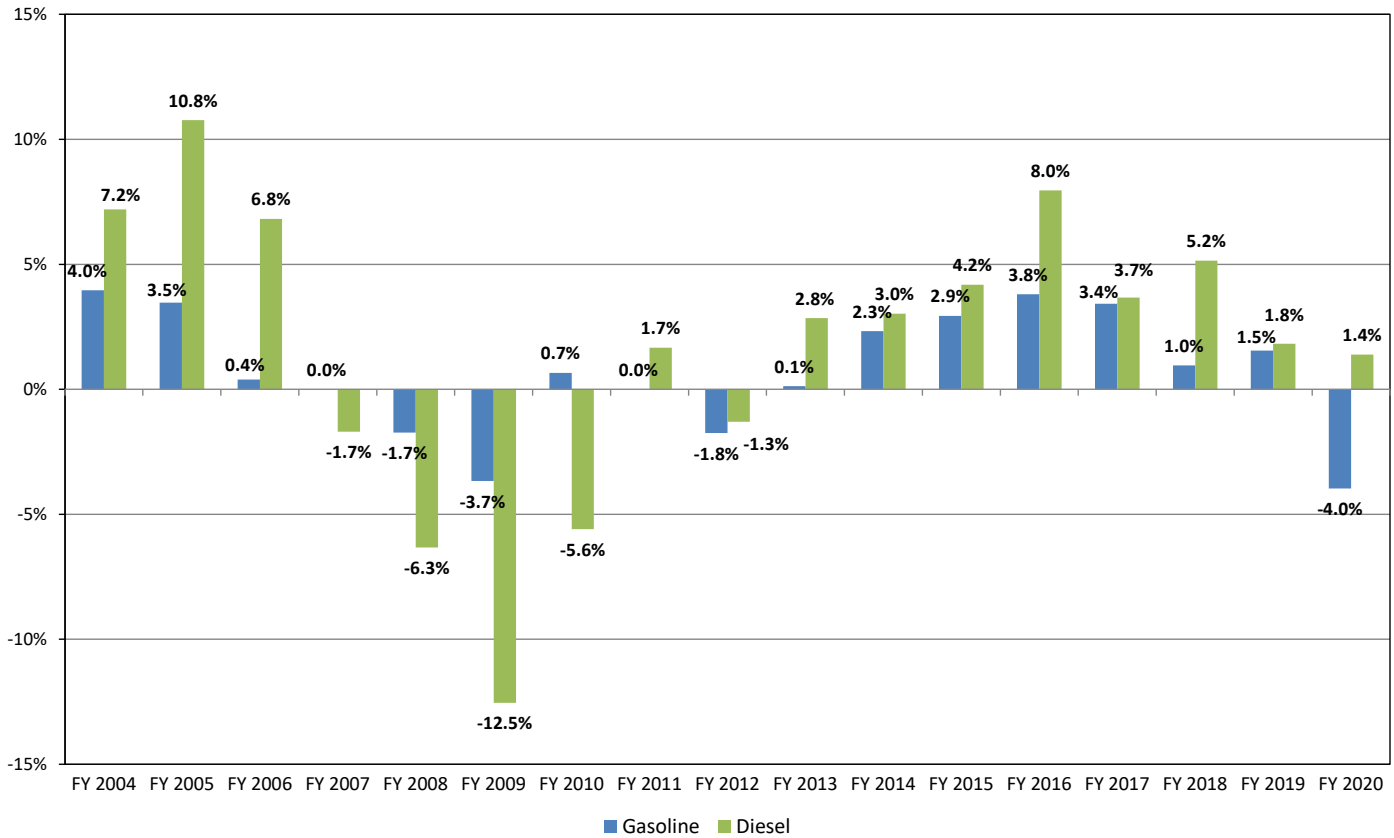
Florida Gasoline Prices (Average of All Grades)



Source: Energy Information Administration, U.S. Department of Energy.

This graph portrays the historical trend of gas prices in Florida (average of all grades). In FY 2008, the Florida gas price escalated from nearly \$3 per gallon to over \$4. However, starting in early fall 2008, Florida gas prices fell rapidly reaching \$1.80 a gallon in December 2008. Since then the gas prices have steadily increased. Starting in FY 2015, gas prices have shown a general downward trend and stabilizing through FY 2017. However, gas prices increased in early 2018, followed by a downward trend with \$2.00 per gallon as of June 2020.

Year-Over-Year Percent Change: Highway Fuel Consumption in Florida



Source: Florida Department of Transportation.

The dramatic slowdown in the economic activities and volatility in fuel prices contributed to a significant decline in the highway fuel consumption rate in the state. As illustrated in the graph above, the year-over-year percentage decline of fuel consumption, particularly diesel from 2007 to 2010, signifies the impact of the economic recession. The consumption rate for both diesel and gasoline rebounded starting in FY 2013 and continued through FY 2019, with diesel and gasoline consumption rate increase at 1.8 percent and 1.5 percent, respectively. For FY 2020, diesel consumption rate continued to grow at a modest 1.4 percent, consistent with continued truck traffic growth throughout the year. The decline in gasoline consumption is consistent with passenger traffic decline as a result of the COVID-19 pandemic.