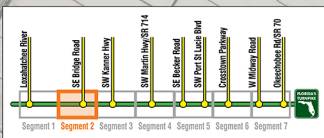




MILEPOST 122.1 to 127.5 (SEGMENT 2)

Financial Project Identification (FPID) Number: 423374-1

Efficient Transportation Decision Making (ETDM) Number: 14295

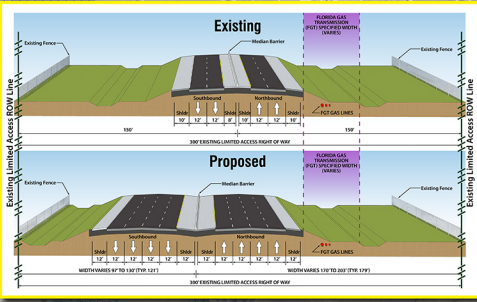
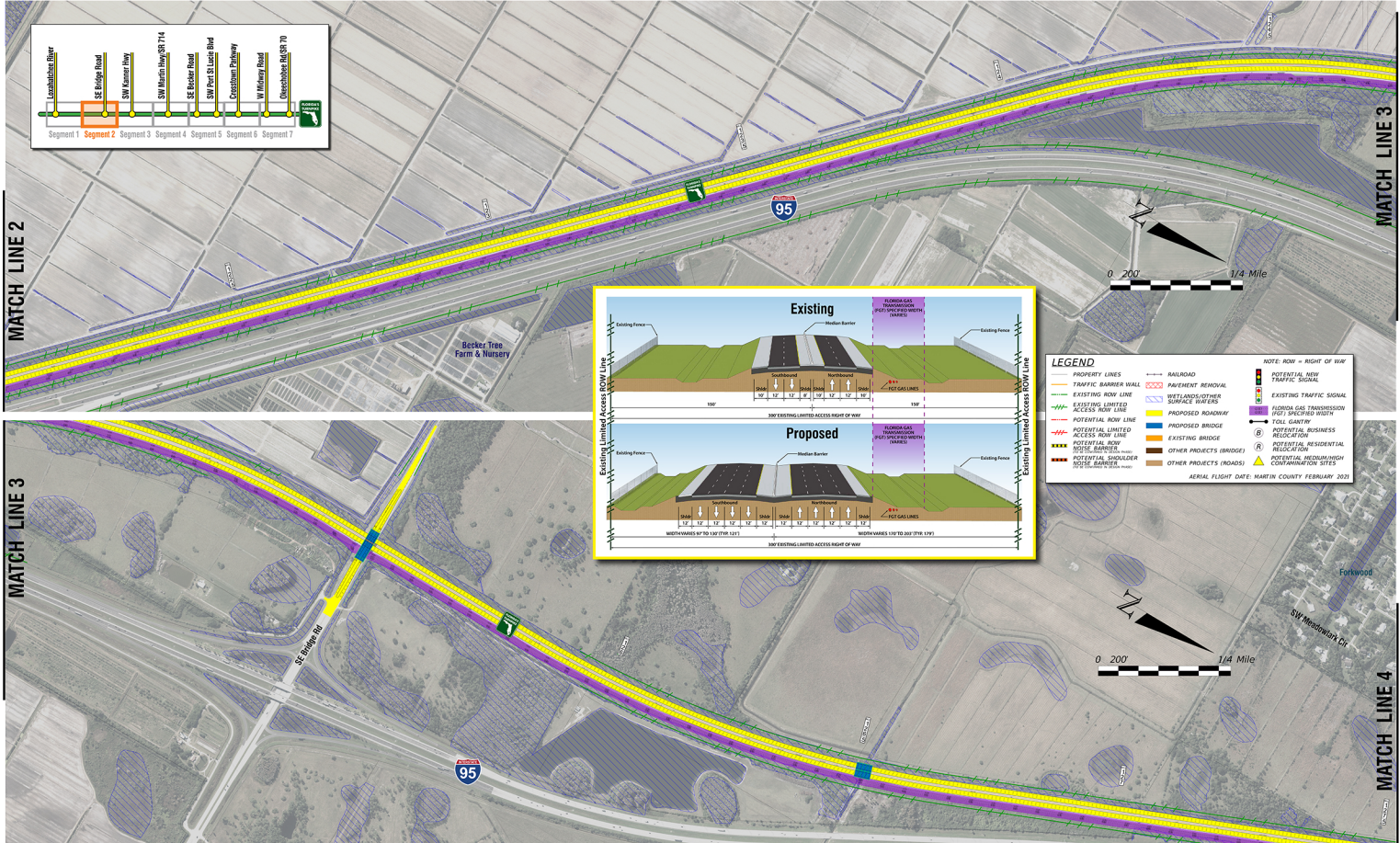


MATCH LINE 2

MATCH LINE 3

MATCH LINE 3

MATCH LINE 4



LEGEND

PROPERTY LINES	RAILROAD	POTENTIAL NEW TRAFFIC SIGNAL
TRAFFIC BARRIER WALL	PAVEMENT REMOVAL	EXISTING TRAFFIC SIGNAL
EXISTING ROW LINE	WETLANDS/OTHER SURFACE WATERS	FLORIDA GAS TRANSMISSION (PLT) SPECIFIED WIDTH
EXISTING LIMITED ACCESS ROW LINE	PROPOSED ROADWAY	SOIL GATEWAY
POTENTIAL ROW LINE	PROPOSED BRIDGE	POTENTIAL BUSINESS RECESSION
POTENTIAL LIMITED ACCESS ROW LINE	EXISTING BRIDGE	POTENTIAL RESIDENTIAL RECESSION
POTENTIAL ROW NOISE BARRIER	OTHER PROJECTS (ROADS)	POTENTIAL MEDIUM/HIGH CROWDING/CONGESTION SITES
POTENTIAL SHOULDER NOISE BARRIER	OTHER PROJECTS (ROADS)	POTENTIAL MEDIUM/HIGH CROWDING/CONGESTION SITES

NOTES: ROW = RIGHT OF WAY

AERIAL FLIGHT DATE: MARTIN COUNTY FEBRUARY 2021