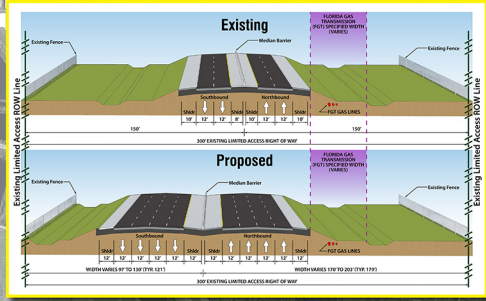
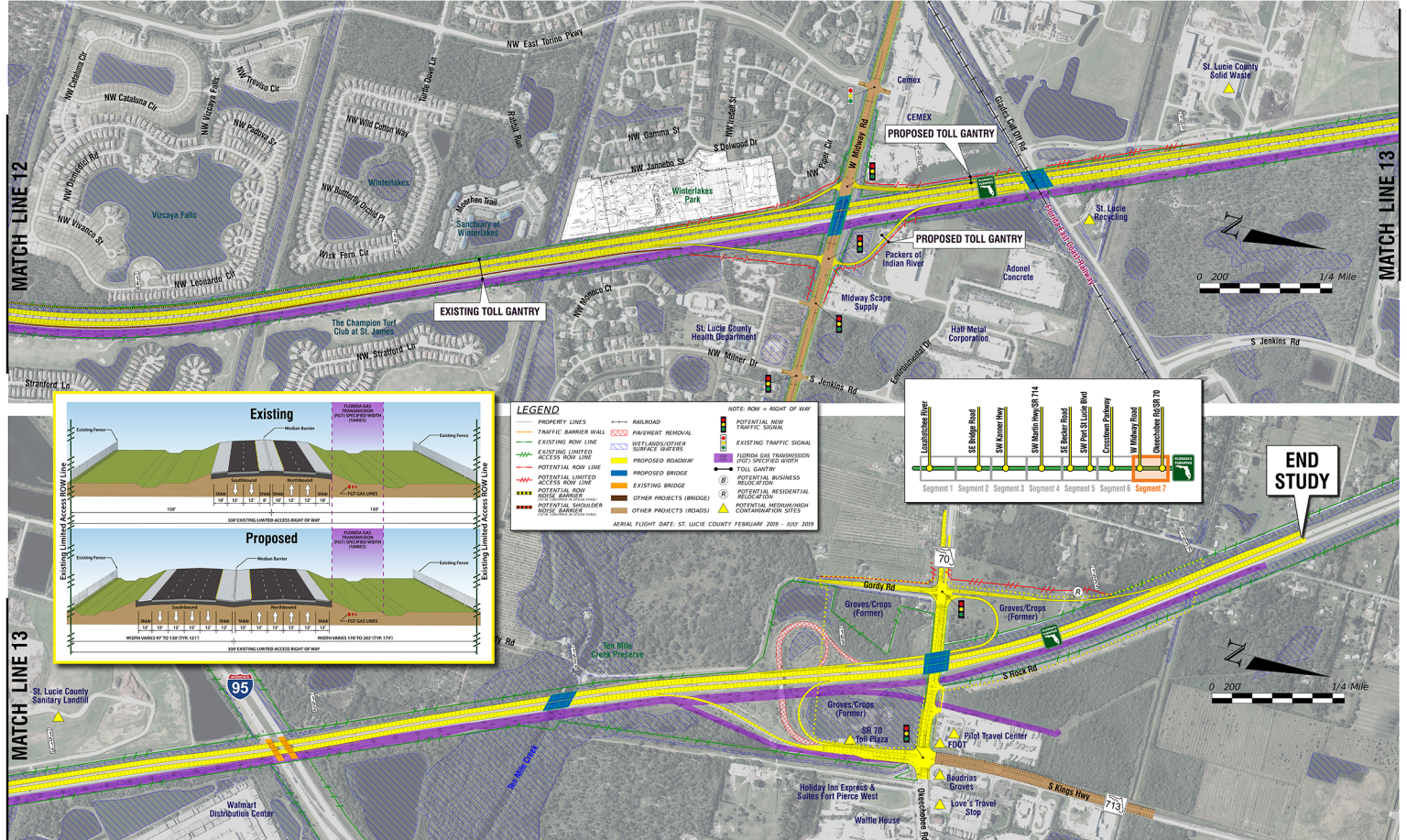




MILEPOST 148.7 to 154.0 (SEGMENT 7)

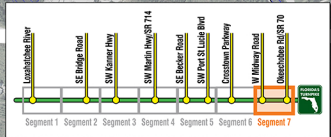


LEGEND

PROPERTY LINES	RAILROAD	POTENTIAL NEW TRAFFIC SIGNAL
TRAFFIC BARRIER WALL	PAVEMENT REMOVAL	EXISTING TRAFFIC SIGNAL
EXISTING ROW LINE	WETLANDS/OTHER SURFACE WATERS	EXISTING GAS TRANSDUCTION POINT (GASPIE) WADA
EXISTING LIMITED ACCESS ROW LINE	PROPOSED ROADWAY	TOLL GANTRY
POTENTIAL ROW LINE	PROPOSED BRIDGE	FLORIDA GAS TRANSDUCTION POINT (GASPIE) WADA
POTENTIAL LIMITED ACCESS ROW LINE	EXISTING BRIDGE	POTENTIAL BUSINESS RELOCATION
POTENTIAL ROW	OTHER PROJECTS (ROADS)	POTENTIAL RESIDENTIAL RELOCATION
POTENTIAL SHOULDER	SOFT BARRIER	POTENTIAL MEDIUM/HIGH CONTAMINATION SITES

NOTE: ROW = RIGHT OF WAY

AERIAL FLIGHT DATE: ST. LUCIE COUNTY FEBRUARY 2019 - JULY 2019



END STUDY