

**Table 6.1 - Florida's Turnpike System
SunPass Participation (Percent of Transactions)**

| Turnpike Facility | SunPass Participation | | |
|---|-----------------------|-------------|--------------|
| | FY 2022 | FY 2021 | Change |
| Turnpike Mainline - SR 821 | 72.0% | 73.0% | (1.0%) |
| Turnpike Mainline - SR 91 (MP 0X - MP 88) | 71.4 | 72.7 | (1.3) |
| Turnpike Mainline - SR 91 (MP 88 - MP 236) | 78.6 | 80.9 | (2.3) |
| Turnpike Mainline - SR 91 (MP 236 - MP 309) | 76.7 | 75.5 | 1.2 |
| Beachline West Expressway | 78.2 | 75.7 | 2.5 |
| Total Mainline | 74.6 | 74.3 | 0.3 |
| Sawgrass Expressway | 78.0 | 79.1 | (1.1) |
| Seminole Expressway | 81.3 | 79.3 | 2.0 |
| Veterans Expressway | 75.9 | 76.3 | (0.4) |
| Southern Connector Extension | 78.5 | 77.4 | 1.1 |
| Polk Parkway | 77.0 | 76.8 | 0.2 |
| Suncoast Parkway | 75.0 | 76.2 | (1.2) |
| Western Beltway, Part C | 76.3 | 74.8 | 1.5 |
| I-4 Connector | 71.8 | 70.9 | 0.9 |
| Beachline East Expressway | 75.2 | 74.4 | 0.8 |
| First Coast Expressway | 66.3 | 67.6 | (1.3) |
| Total Expansion Projects | 76.1 | 76.2 | (0.1) |
| Total System | 75.1 | 75.0 | 0.1% |

Source: Turnpike Enterprise Finance Office.

**Table 6.2 - SunPass Transactions and Participation
FY 2022**

| Turnpike Facility | Annual Transactions | | | Participation |
|---|---------------------|--------------------|----------------------|---------------|
| | SunPass | Non-SunPass | Total | |
| Turnpike Mainline - SR 821 | 156,702,402 | 60,939,860 | 217,642,262 | 72.0% |
| Turnpike Mainline - SR 91 (MP 0X - MP 88) | 125,302,218 | 50,113,708 | 175,415,926 | 71.4 |
| Turnpike Mainline - SR 91 (MP 88 - MP 236) | 150,467,379 | 41,077,188 | 191,544,567 | 78.6 |
| Turnpike Mainline - SR 91 (MP 236 - MP 309) | 86,442,735 | 26,252,871 | 112,695,606 | 76.7 |
| Beachline West Expressway | 28,357,193 | 7,900,959 | 36,258,152 | 78.2 |
| Sawgrass Expressway | 71,151,175 | 20,042,673 | 91,193,848 | 78.0 |
| Seminole Expressway | 34,452,153 | 7,916,581 | 42,368,734 | 81.3 |
| Veterans Expressway | 54,054,128 | 17,174,737 | 71,228,865 | 75.9 |
| Southern Connector Extension | 14,567,002 | 3,981,641 | 18,548,643 | 78.5 |
| Polk Parkway | 31,910,826 | 9,525,544 | 41,436,370 | 77.0 |
| Suncoast Parkway | 32,902,974 | 10,977,014 | 43,879,988 | 75.0 |
| Western Beltway, Part C | 14,780,451 | 4,595,293 | 19,375,744 | 76.3 |
| I-4 Connector | 15,338,006 | 6,012,988 | 21,350,994 | 71.8 |
| Beachline East Expressway | 16,388,166 | 5,414,253 | 21,802,419 | 75.2 |
| First Coast Expressway | 22,076,192 | 11,217,392 | 33,293,584 | 66.3 |
| Total | 854,893,000 | 283,142,702 | 1,138,035,702 | 75.1% |

Source: Turnpike Enterprise Finance Office.

**Table 6.3 - Florida's Turnpike System
Quarterly SunPass Toll Revenue
FY 2022 vs. FY 2021**

| Months | FY 2022 | FY 2021 | Variance | |
|----------------------|----------------------|----------------------|----------------------|--------------|
| | | | Amount | Change |
| July | \$73,231,910 | \$56,018,001 | \$17,213,909 | 30.7% |
| August | 71,328,045 | 57,459,415 | 13,868,630 | 24.1 |
| September | 70,031,224 | 57,728,655 | 12,302,569 | 21.3 |
| 1st Quarter Subtotal | 214,591,179 | 171,206,071 | 43,385,108 | 25.3 |
| October | 75,649,606 | 62,156,828 | 13,492,778 | 21.7 |
| November | 75,529,453 | 58,688,557 | 16,840,896 | 28.7 |
| December | 77,800,742 | 63,138,545 | 14,662,197 | 23.2 |
| 2nd Quarter Subtotal | 228,979,801 | 183,983,930 | 44,995,871 | 24.5 |
| January | 72,518,354 | 60,994,106 | 11,524,248 | 18.9 |
| February | 72,551,792 | 59,310,867 | 13,240,925 | 22.3 |
| March | 83,361,568 | 70,509,143 | 12,852,425 | 18.2 |
| 3rd Quarter Subtotal | 228,431,714 | 190,814,116 | 37,617,598 | 19.7 |
| April | 79,695,351 | 69,408,488 | 10,286,863 | 14.8 |
| May | 79,392,858 | 71,713,979 | 7,678,879 | 10.7 |
| June | 74,615,500 | 72,074,403 | 2,541,097 | 3.5 |
| 4th Quarter Subtotal | 233,703,709 | 213,196,870 | 20,506,839 | 9.6 |
| Annual Total | \$905,706,403 | \$759,200,987 | \$146,505,416 | 19.3% |

Source: Turnpike Enterprise Finance Office.

**Table 6.4 - Turnpike Mainline - SR 821
SunPass Transactions and Participation
FY 2022**

| Month | Number of Transactions | | | SunPass Participation |
|--------------|------------------------|-------------------|--------------------|-----------------------|
| | SunPass | Non-SunPass | Total | |
| July 2021 | 12,909,711 | 4,763,117 | 17,672,828 | 73.0% |
| August | 12,709,295 | 4,682,481 | 17,391,776 | 73.1 |
| September | 12,795,841 | 4,709,316 | 17,505,157 | 73.1 |
| October | 13,576,599 | 5,116,676 | 18,693,275 | 72.6 |
| November | 13,061,447 | 5,049,016 | 18,110,463 | 72.1 |
| December | 13,087,835 | 5,166,599 | 18,254,434 | 71.7 |
| January 2022 | 12,582,263 | 4,832,506 | 17,414,769 | 72.3 |
| February | 12,661,607 | 4,861,747 | 17,523,354 | 72.3 |
| March | 14,073,595 | 5,507,403 | 19,580,998 | 71.9 |
| April | 13,511,069 | 5,378,616 | 18,889,685 | 71.5 |
| May | 13,311,564 | 5,505,143 | 18,816,707 | 70.7 |
| June | 12,421,576 | 5,367,240 | 17,788,816 | 69.8 |
| Total | 156,702,402 | 60,939,860 | 217,642,262 | 72.0% |

Source: Turnpike Enterprise Finance Office.

**Table 6.5 - Turnpike Mainline - SR 821
Quarterly SunPass Revenue Results
FY 2022 vs. FY 2021**

| Months | FY 2022 | FY 2021 | Variance | |
|----------------------|----------------------|----------------------|---------------------|--------------|
| | | | Amount | Change |
| July | \$12,382,384 | \$9,764,606 | \$2,617,778 | 26.8% |
| August | 12,168,140 | 10,015,861 | 2,152,279 | 21.5 |
| September | 12,187,537 | 10,062,793 | 2,124,744 | 21.1 |
| 1st Quarter Subtotal | 36,738,061 | 29,843,260 | 6,894,801 | 23.1 |
| October | 12,888,477 | 10,834,676 | 2,053,801 | 19.0 |
| November | 12,446,520 | 10,230,115 | 2,216,405 | 21.7 |
| December | 12,467,598 | 11,005,801 | 1,461,797 | 13.3 |
| 2nd Quarter Subtotal | 37,802,595 | 32,070,592 | 5,732,003 | 17.9 |
| January | 11,998,030 | 10,632,000 | 1,366,030 | 12.8 |
| February | 12,043,925 | 10,338,591 | 1,705,334 | 16.5 |
| March | 13,427,408 | 12,290,584 | 1,136,824 | 9.2 |
| 3rd Quarter Subtotal | 37,469,363 | 33,261,175 | 4,208,188 | 12.7 |
| April | 12,868,077 | 12,098,727 | 769,350 | 6.4 |
| May | 12,749,586 | 12,500,602 | 248,984 | 2.0 |
| June | 11,983,618 | 12,563,429 | (579,811) | (4.6) |
| 4th Quarter Subtotal | 37,601,281 | 37,162,758 | 438,523 | 1.2 |
| Annual Total | \$149,611,300 | \$132,337,785 | \$17,273,515 | 13.1% |

Source: Turnpike Enterprise Finance Office.

**Table 6.6 - Turnpike Mainline - SR 91 (MP 0X - MP 88)
SunPass Transactions and Participation
FY 2022**

| Month | Number of Transactions | | | SunPass Participation |
|--------------|------------------------|-------------------|--------------------|-----------------------|
| | SunPass | Non-SunPass | Total | |
| July 2021 | 10,376,370 | 3,968,001 | 14,344,371 | 72.3% |
| August | 10,213,562 | 3,872,674 | 14,086,236 | 72.5 |
| September | 9,991,428 | 3,799,990 | 13,791,418 | 72.4 |
| October | 10,676,879 | 4,130,689 | 14,807,568 | 72.1 |
| November | 10,386,135 | 4,086,183 | 14,472,318 | 71.8 |
| December | 10,580,442 | 4,272,871 | 14,853,313 | 71.2 |
| January 2022 | 10,096,711 | 4,047,571 | 14,144,282 | 71.4 |
| February | 10,233,011 | 4,001,240 | 14,234,251 | 71.9 |
| March | 11,547,238 | 4,565,683 | 16,112,921 | 71.7 |
| April | 10,893,746 | 4,420,665 | 15,314,411 | 71.1 |
| May | 10,552,043 | 4,552,887 | 15,104,930 | 69.9 |
| June | 9,754,653 | 4,395,254 | 14,149,907 | 68.9 |
| Total | 125,302,218 | 50,113,708 | 175,415,926 | 71.4% |

Source: Turnpike Enterprise Finance Office.

**Table 6.7 - Turnpike Mainline - SR 91 (MP 88 - MP 236)
SunPass Transactions and Participation
FY 2022**

| Month | Number of Transactions | | | SunPass Participation |
|--------------|------------------------|-------------------|--------------------|-----------------------|
| | SunPass | Non-SunPass | Total | |
| July 2021 | 3,882,056 | 917,147 | 4,799,203 | 80.9% |
| August | 3,776,820 | 818,170 | 4,594,990 | 82.2 |
| September | 3,662,889 | 767,185 | 4,430,074 | 82.7 |
| October | 3,976,348 | 852,811 | 4,829,159 | 82.3 |
| November* | 14,704,446 | 3,805,129 | 18,509,575 | 79.4 |
| December | 18,138,745 | 4,946,449 | 23,085,194 | 78.6 |
| January 2022 | 16,539,214 | 4,477,733 | 21,016,947 | 78.7 |
| February | 16,079,671 | 4,267,366 | 20,347,037 | 79.0 |
| March | 18,561,046 | 5,210,578 | 23,771,624 | 78.1 |
| April | 17,558,820 | 5,058,202 | 22,617,022 | 77.6 |
| May | 17,429,729 | 5,031,067 | 22,460,796 | 77.6 |
| June | 16,157,595 | 4,925,351 | 21,082,946 | 76.6 |
| Total | 150,467,379 | 41,077,188 | 191,544,567 | 78.6% |

Source: Turnpike Enterprise Finance Office.

* In November 2021, the toll collection on the Mainline - SR 91 (MP 88 - MP 236) was moved from the ramps to the mainlines.

**Table 6.8 - Turnpike Mainline - SR 91 (MP 236 - MP 309)
SunPass Transactions and Participation
FY 2022**

| Month | Number of Transactions | | | SunPass Participation |
|--------------|------------------------|-------------------|--------------------|-----------------------|
| | SunPass | Non-SunPass | Total | |
| July 2021 | 7,035,155 | 2,263,790 | 9,298,945 | 75.7% |
| August | 6,847,471 | 1,948,942 | 8,796,413 | 77.8 |
| September | 6,788,309 | 1,900,779 | 8,689,088 | 78.1 |
| October | 7,305,479 | 2,131,918 | 9,437,397 | 77.4 |
| November | 7,144,410 | 2,157,722 | 9,302,132 | 76.8 |
| December | 7,419,422 | 2,328,744 | 9,748,166 | 76.1 |
| January 2022 | 6,735,745 | 2,032,929 | 8,768,674 | 76.8 |
| February | 6,837,313 | 2,038,502 | 8,875,815 | 77.0 |
| March | 7,859,017 | 2,401,832 | 10,260,849 | 76.6 |
| April | 7,607,449 | 2,317,983 | 9,925,432 | 76.6 |
| May | 7,608,254 | 2,341,898 | 9,950,152 | 76.5 |
| June | 7,254,711 | 2,387,832 | 9,642,543 | 75.2 |
| Total | 86,442,735 | 26,252,871 | 112,695,606 | 76.7% |

Source: Turnpike Enterprise Finance Office.

**Table 6.9 - Turnpike Mainline Summary - SR 91 (MP 0X - MP 309)
Quarterly SunPass Revenue Results
FY 2022 vs. FY 2021**

| Months | FY 2022 | FY 2021 | Variance | |
|----------------------|----------------------|----------------------|---------------------|--------------|
| | | | Amount | Change |
| July | \$36,148,621 | \$27,028,338 | \$9,120,283 | 33.7% |
| August | 34,883,984 | 27,723,812 | 7,160,172 | 25.8 |
| September | 33,867,834 | 27,853,718 | 6,014,116 | 21.6 |
| 1st Quarter Subtotal | 104,900,439 | 82,605,868 | 22,294,571 | 27.0 |
| October | 36,791,744 | 29,990,283 | 6,801,461 | 22.7 |
| November | 37,973,347 | 28,316,865 | 9,656,482 | 34.1 |
| December | 39,288,231 | 30,463,957 | 8,824,274 | 29.0 |
| 2nd Quarter Subtotal | 114,053,322 | 88,771,105 | 25,282,217 | 28.5 |
| January | 36,391,613 | 29,429,278 | 6,962,335 | 23.7 |
| February | 35,942,976 | 28,617,126 | 7,325,850 | 25.6 |
| March | 41,716,714 | 34,020,225 | 7,696,489 | 22.6 |
| 3rd Quarter Subtotal | 114,051,303 | 92,066,629 | 21,984,674 | 23.9 |
| April | 39,659,438 | 33,489,165 | 6,170,273 | 18.4 |
| May | 39,526,249 | 34,601,550 | 4,924,699 | 14.2 |
| June | 37,431,821 | 34,775,452 | 2,656,369 | 7.6 |
| 4th Quarter Subtotal | 116,617,508 | 102,866,167 | 13,751,341 | 13.4 |
| Annual Total | \$449,622,572 | \$366,309,769 | \$83,312,803 | 22.7% |

Source: Turnpike Enterprise Finance Office.

**Table 6.10 - Beachline West Expressway
SunPass Transactions and Participation
FY 2022**

| Month | Number of Transactions | | | SunPass Participation |
|--------------|------------------------|------------------|-------------------|-----------------------|
| | SunPass | Non-SunPass | Total | |
| July 2021 | 2,249,760 | 665,358 | 2,915,118 | 77.2% |
| August | 2,130,619 | 598,076 | 2,728,695 | 78.1 |
| September | 2,080,035 | 564,631 | 2,644,666 | 78.7 |
| October | 2,347,416 | 646,207 | 2,993,623 | 78.4 |
| November | 2,294,384 | 644,749 | 2,939,133 | 78.1 |
| December | 2,412,301 | 697,796 | 3,110,097 | 77.6 |
| January 2022 | 2,225,564 | 627,528 | 2,853,092 | 78.0 |
| February | 2,327,190 | 630,092 | 2,957,282 | 78.7 |
| March | 2,707,001 | 722,945 | 3,429,946 | 78.9 |
| April | 2,574,729 | 681,945 | 3,256,674 | 79.1 |
| May | 2,619,046 | 723,257 | 3,342,303 | 78.4 |
| June | 2,389,148 | 698,375 | 3,087,523 | 77.4 |
| Total | 28,357,193 | 7,900,959 | 36,258,152 | 78.2% |

Source: Turnpike Enterprise Finance Office.

**Table 6.11 - Beachline West Expressway
Quarterly Sunpass Revenue Results
FY 2022 vs. FY 2021**

| Months | FY 2022 | FY 2021 | Variance | |
|----------------------|---------------------|---------------------|--------------------|--------------|
| | | | Amount | Change |
| July | \$1,827,624 | \$1,283,165 | \$544,459 | 42.4% |
| August | 1,677,569 | 1,316,182 | 361,387 | 27.5 |
| September | 1,769,191 | 1,322,350 | 446,841 | 33.8 |
| 1st Quarter Subtotal | 5,274,384 | 3,921,697 | 1,352,687 | 34.5 |
| October | 2,035,328 | 1,423,783 | 611,545 | 43.0 |
| November | 1,924,840 | 1,344,338 | 580,502 | 43.2 |
| December | 2,060,198 | 1,446,270 | 613,928 | 42.4 |
| 2nd Quarter Subtotal | 6,020,366 | 4,214,391 | 1,805,975 | 42.9 |
| January | 1,959,404 | 1,397,149 | 562,255 | 40.2 |
| February | 1,987,185 | 1,358,592 | 628,593 | 46.3 |
| March | 2,365,877 | 1,615,103 | 750,774 | 46.5 |
| 3rd Quarter Subtotal | 6,312,466 | 4,370,844 | 1,941,622 | 44.4 |
| April | 2,117,195 | 1,589,891 | 527,304 | 33.2 |
| May | 2,230,150 | 1,642,702 | 587,448 | 35.8 |
| June | 1,992,834 | 1,650,958 | 341,876 | 20.7 |
| 4th Quarter Subtotal | 6,340,179 | 4,883,551 | 1,456,628 | 29.8 |
| Annual Total | \$23,947,395 | \$17,390,483 | \$6,556,912 | 37.7% |

Source: Turnpike Enterprise Finance Office.

**Table 6.12 - Sawgrass Expressway
SunPass Transactions and Participation
FY 2022**

| Month | Number of Transactions | | | SunPass Participation |
|--------------|------------------------|-------------------|-------------------|-----------------------|
| | SunPass | Non-SunPass | Total | |
| July 2021 | 5,782,919 | 1,521,236 | 7,304,155 | 79.2% |
| August | 5,782,147 | 1,507,749 | 7,289,896 | 79.3 |
| September | 5,736,818 | 1,515,961 | 7,252,779 | 79.1 |
| October | 6,159,861 | 1,653,711 | 7,813,572 | 78.8 |
| November | 6,021,976 | 1,654,847 | 7,676,823 | 78.4 |
| December | 6,096,212 | 1,736,902 | 7,833,114 | 77.8 |
| January 2022 | 5,639,945 | 1,598,813 | 7,238,758 | 77.9 |
| February | 5,732,286 | 1,620,274 | 7,352,560 | 78.0 |
| March | 6,413,657 | 1,844,041 | 8,257,698 | 77.7 |
| April | 6,135,302 | 1,822,676 | 7,957,978 | 77.1 |
| May | 6,103,943 | 1,845,597 | 7,949,540 | 76.8 |
| June | 5,546,109 | 1,720,866 | 7,266,975 | 76.3 |
| Total | 71,151,175 | 20,042,673 | 91,193,848 | 78.0% |

Source: Turnpike Enterprise Finance Office.

**Table 6.13 - Sawgrass Expressway
Quarterly SunPass Revenue Results
FY 2022 vs. FY 2021**

| Months | FY 2022 | FY 2021 | Variance | |
|----------------------|---------------------|---------------------|--------------------|--------------|
| | | | Amount | Change |
| July | \$5,984,350 | \$4,757,954 | \$1,226,396 | 25.8% |
| August | 5,978,160 | 4,880,382 | 1,097,778 | 22.5 |
| September | 5,919,212 | 4,903,250 | 1,015,962 | 20.7 |
| 1st Quarter Subtotal | 17,881,722 | 14,541,586 | 3,340,136 | 23.0 |
| October | 6,328,914 | 5,279,362 | 1,049,552 | 19.9 |
| November | 6,199,332 | 4,984,781 | 1,214,551 | 24.4 |
| December | 6,262,378 | 5,362,746 | 899,632 | 16.8 |
| 2nd Quarter Subtotal | 18,790,624 | 15,626,889 | 3,163,735 | 20.2 |
| January | 5,785,216 | 5,180,605 | 604,611 | 11.7 |
| February | 5,876,773 | 5,037,637 | 839,136 | 16.7 |
| March | 6,622,758 | 5,988,776 | 633,982 | 10.6 |
| 3rd Quarter Subtotal | 18,284,747 | 16,207,018 | 2,077,729 | 12.8 |
| April | 6,326,949 | 5,895,291 | 431,658 | 7.3 |
| May | 6,307,032 | 6,091,110 | 215,922 | 3.5 |
| June | 5,774,672 | 6,121,724 | (347,052) | (5.7) |
| 4th Quarter Subtotal | 18,408,653 | 18,108,125 | 300,528 | 1.7 |
| Annual Total | \$73,365,746 | \$64,483,618 | \$8,882,128 | 13.8% |

Source: Turnpike Enterprise Finance Office.

**Table 6.14 - Seminole Expressway
SunPass Transactions and Participation
FY 2022**

| Month | Number of Transactions | | | SunPass Participation |
|--------------|------------------------|------------------|-------------------|-----------------------|
| | SunPass | Non-SunPass | Total | |
| July 2021 | 2,868,460 | 686,732 | 3,555,192 | 80.7% |
| August | 2,842,537 | 638,906 | 3,481,443 | 81.6 |
| September | 2,811,653 | 622,569 | 3,434,222 | 81.9 |
| October | 3,013,880 | 685,701 | 3,699,581 | 81.5 |
| November | 2,847,486 | 663,843 | 3,511,329 | 81.1 |
| December | 2,946,160 | 701,659 | 3,647,819 | 80.8 |
| January 2022 | 2,695,194 | 618,064 | 3,313,258 | 81.3 |
| February | 2,775,399 | 628,426 | 3,403,825 | 81.5 |
| March | 3,062,788 | 692,610 | 3,755,398 | 81.6 |
| April | 2,943,100 | 657,094 | 3,600,194 | 81.7 |
| May | 2,939,728 | 676,826 | 3,616,554 | 81.3 |
| June | 2,705,768 | 644,151 | 3,349,919 | 80.8 |
| Total | 34,452,153 | 7,916,581 | 42,368,734 | 81.3% |

Source: Turnpike Enterprise Finance Office.

**Table 6.15 - Seminole Expressway
Quarterly SunPass Revenue Results
FY 2022 vs. FY 2021**

| Months | FY 2022 | FY 2021 | Variance | |
|----------------------|---------------------|---------------------|--------------------|-------------|
| | | | Amount | Change |
| July | \$4,019,581 | \$3,212,537 | \$807,044 | 25.1% |
| August | 3,936,221 | 3,295,200 | 641,021 | 19.5 |
| September | 3,882,313 | 3,310,641 | 571,672 | 17.3 |
| 1st Quarter Subtotal | 11,838,115 | 9,818,378 | 2,019,737 | 20.6 |
| October | 4,156,002 | 3,564,589 | 591,413 | 16.6 |
| November | 3,945,538 | 3,365,689 | 579,849 | 17.2 |
| December | 4,076,637 | 3,620,889 | 455,748 | 12.6 |
| 2nd Quarter Subtotal | 12,178,177 | 10,551,167 | 1,627,010 | 15.4 |
| January | 3,744,868 | 3,497,909 | 246,959 | 7.1 |
| February | 3,875,282 | 3,401,378 | 473,904 | 13.9 |
| March | 4,270,736 | 4,043,580 | 227,156 | 5.6 |
| 3rd Quarter Subtotal | 11,890,886 | 10,942,867 | 948,019 | 8.7 |
| April | 4,050,527 | 3,980,459 | 70,068 | 1.8 |
| May | 4,051,993 | 4,112,675 | (60,682) | (1.5) |
| June | 3,766,533 | 4,133,345 | (366,812) | (8.9) |
| 4th Quarter Subtotal | 11,869,053 | 12,226,479 | (357,426) | (2.9) |
| Annual Total | \$47,776,231 | \$43,538,891 | \$4,237,340 | 9.7% |

Source: Turnpike Enterprise Finance Office.

**Table 6.16 - Veterans Expressway
SunPass Transactions and Participation
FY 2022**

| Month | Number of Transactions | | | SunPass Participation |
|--------------|------------------------|-------------------|-------------------|-----------------------|
| | SunPass | Non-SunPass | Total | |
| July 2021 | 4,296,978 | 1,321,989 | 5,618,967 | 76.5% |
| August | 4,349,640 | 1,307,870 | 5,657,510 | 76.9 |
| September | 4,273,042 | 1,301,932 | 5,574,974 | 76.6 |
| October | 4,608,980 | 1,421,610 | 6,030,590 | 76.4 |
| November | 4,431,976 | 1,381,589 | 5,813,565 | 76.2 |
| December | 4,668,554 | 1,489,233 | 6,157,787 | 75.8 |
| January 2022 | 4,273,897 | 1,348,690 | 5,622,587 | 76.0 |
| February | 4,307,440 | 1,347,079 | 5,654,519 | 76.2 |
| March | 4,870,941 | 1,561,877 | 6,432,818 | 75.7 |
| April | 4,763,478 | 1,568,847 | 6,332,325 | 75.2 |
| May | 4,784,678 | 1,600,523 | 6,385,201 | 74.9 |
| June | 4,424,524 | 1,523,498 | 5,948,022 | 74.4 |
| Total | 54,054,128 | 17,174,737 | 71,228,865 | 75.9% |

Source: Turnpike Enterprise Finance Office.

**Table 6.17 - Veterans Expressway
Quarterly SunPass Revenue Results
FY 2022 vs. FY 2021**

| Months | FY 2022 | FY 2021 | Variance | |
|----------------------|---------------------|---------------------|--------------------|--------------|
| | | | Amount | Change |
| July | \$3,804,855 | \$3,024,536 | \$780,319 | 25.8% |
| August | 3,843,149 | 3,102,361 | 740,788 | 23.9 |
| September | 3,765,166 | 3,116,898 | 648,268 | 20.8 |
| 1st Quarter Subtotal | 11,413,170 | 9,243,795 | 2,169,375 | 23.5 |
| October | 4,070,778 | 3,355,985 | 714,793 | 21.3 |
| November | 3,918,037 | 3,168,725 | 749,312 | 23.6 |
| December | 4,116,863 | 3,408,990 | 707,873 | 20.8 |
| 2nd Quarter Subtotal | 12,105,678 | 9,933,700 | 2,171,978 | 21.9 |
| January | 3,770,737 | 3,293,207 | 477,530 | 14.5 |
| February | 3,795,962 | 3,202,325 | 593,637 | 18.5 |
| March | 4,306,263 | 3,806,945 | 499,318 | 13.1 |
| 3rd Quarter Subtotal | 11,872,962 | 10,302,477 | 1,570,485 | 15.2 |
| April | 4,218,914 | 3,747,518 | 471,396 | 12.6 |
| May | 4,249,882 | 3,871,997 | 377,885 | 9.8 |
| June | 3,946,778 | 3,891,456 | 55,322 | 1.4 |
| 4th Quarter Subtotal | 12,415,574 | 11,510,971 | 904,603 | 7.9 |
| Annual Total | \$47,807,384 | \$40,990,943 | \$6,816,441 | 16.6% |

Source: Turnpike Enterprise Finance Office.

**Table 6.18 - Southern Connector Extension
SunPass Transactions and Participation
FY 2022**

| Month | Number of Transactions | | | SunPass Participation |
|--------------|------------------------|------------------|-------------------|-----------------------|
| | SunPass | Non-SunPass | Total | |
| July 2021 | 1,271,599 | 381,900 | 1,653,499 | 76.9% |
| August | 1,130,765 | 300,105 | 1,430,870 | 79.0 |
| September | 1,054,758 | 259,193 | 1,313,951 | 80.3 |
| October | 1,189,147 | 304,704 | 1,493,851 | 79.6 |
| November | 1,174,893 | 314,080 | 1,488,973 | 78.9 |
| December | 1,258,954 | 350,430 | 1,609,384 | 78.2 |
| January 2022 | 1,102,564 | 291,565 | 1,394,129 | 79.1 |
| February | 1,160,401 | 305,513 | 1,465,914 | 79.2 |
| March | 1,344,713 | 367,401 | 1,712,114 | 78.5 |
| April | 1,341,153 | 375,939 | 1,717,092 | 78.1 |
| May | 1,287,548 | 355,753 | 1,643,301 | 78.4 |
| June | 1,250,507 | 375,058 | 1,625,565 | 76.9 |
| Total | 14,567,002 | 3,981,641 | 18,548,643 | 78.5% |

Source: Turnpike Enterprise Finance Office.

**Table 6.19 - Southern Connector Extension
Quarterly SunPass Revenue Results
FY 2022 vs. FY 2021**

| Months | FY 2022 | FY 2021 | Variance | |
|----------------------|---------------------|--------------------|--------------------|--------------|
| | | | Amount | Change |
| July | \$1,042,860 | \$690,110 | \$352,750 | 51.1% |
| August | 948,070 | 707,867 | 240,203 | 33.9 |
| September | 886,928 | 711,184 | 175,744 | 24.7 |
| 1st Quarter Subtotal | 2,877,858 | 2,109,161 | 768,697 | 36.4 |
| October | 980,863 | 765,737 | 215,126 | 28.1 |
| November | 970,660 | 723,010 | 247,650 | 34.3 |
| December | 1,025,040 | 777,831 | 247,209 | 31.8 |
| 2nd Quarter Subtotal | 2,976,563 | 2,266,578 | 709,985 | 31.3 |
| January | 913,568 | 751,413 | 162,155 | 21.6 |
| February | 944,107 | 730,676 | 213,431 | 29.2 |
| March | 1,093,726 | 868,632 | 225,094 | 25.9 |
| 3rd Quarter Subtotal | 2,951,401 | 2,350,721 | 600,680 | 25.6 |
| April | 1,089,253 | 855,073 | 234,180 | 27.4 |
| May | 1,058,351 | 883,475 | 174,876 | 19.8 |
| June | 1,033,663 | 887,915 | 145,748 | 16.4 |
| 4th Quarter Subtotal | 3,181,267 | 2,626,463 | 554,804 | 21.1 |
| Annual Total | \$11,987,089 | \$9,352,923 | \$2,634,166 | 28.2% |

Source: Turnpike Enterprise Finance Office.

**Table 6.20 - Polk Parkway
SunPass Transactions and Participation
FY 2022**

| Month | Number of Transactions | | | SunPass Participation |
|--------------|------------------------|------------------|-------------------|-----------------------|
| | SunPass | Non-SunPass | Total | |
| July 2021 | 2,486,766 | 744,545 | 3,231,311 | 77.0% |
| August | 2,522,323 | 714,024 | 3,236,347 | 77.9 |
| September | 2,542,186 | 710,631 | 3,252,817 | 78.2 |
| October | 2,740,078 | 802,888 | 3,542,966 | 77.3 |
| November | 2,592,904 | 762,819 | 3,355,723 | 77.3 |
| December | 2,695,157 | 843,648 | 3,538,805 | 76.2 |
| January 2022 | 2,567,053 | 765,666 | 3,332,719 | 77.0 |
| February | 2,614,837 | 769,134 | 3,383,971 | 77.3 |
| March | 2,944,688 | 891,707 | 3,836,395 | 76.8 |
| April | 2,844,171 | 866,755 | 3,710,926 | 76.6 |
| May | 2,775,972 | 850,224 | 3,626,196 | 76.6 |
| June | 2,584,691 | 803,503 | 3,388,194 | 76.3 |
| Total | 31,910,826 | 9,525,544 | 41,436,370 | 77.0% |

Source: Turnpike Enterprise Finance Office.

**Table 6.21 - Polk Parkway
Quarterly SunPass Revenue Results
FY 2022 vs. FY 2021**

| Months | FY 2022 | FY 2021 | Variance | |
|----------------------|---------------------|---------------------|--------------------|--------------|
| | | | Amount | Change |
| July | \$2,515,468 | \$2,071,344 | \$444,124 | 21.4% |
| August | 2,551,893 | 2,124,643 | 427,250 | 20.1 |
| September | 2,560,105 | 2,134,598 | 425,507 | 19.9 |
| 1st Quarter Subtotal | 7,627,466 | 6,330,585 | 1,296,881 | 20.5 |
| October | 2,745,495 | 2,298,336 | 447,159 | 19.5 |
| November | 2,610,780 | 2,170,092 | 440,688 | 20.3 |
| December | 2,696,346 | 2,334,636 | 361,710 | 15.5 |
| 2nd Quarter Subtotal | 8,052,621 | 6,803,064 | 1,249,557 | 18.4 |
| January | 2,586,247 | 2,255,343 | 330,904 | 14.7 |
| February | 2,623,756 | 2,193,103 | 430,653 | 19.6 |
| March | 2,972,886 | 2,607,175 | 365,711 | 14.0 |
| 3rd Quarter Subtotal | 8,182,889 | 7,055,621 | 1,127,268 | 16.0 |
| April | 2,843,097 | 2,566,476 | 276,621 | 10.8 |
| May | 2,803,760 | 2,651,725 | 152,035 | 5.7 |
| June | 2,636,641 | 2,665,052 | (28,411) | (1.1) |
| 4th Quarter Subtotal | 8,283,498 | 7,883,253 | 400,245 | 5.1 |
| Annual Total | \$32,146,474 | \$28,072,523 | \$4,073,951 | 14.5% |

Source: Turnpike Enterprise Finance Office.

**Table 6.22 - Suncoast Parkway
SunPass Transactions and Participation
FY 2022**

| Month | Number of Transactions | | | SunPass Participation |
|--------------|------------------------|-------------------|-------------------|-----------------------|
| | SunPass | Non-SunPass | Total | |
| July 2021 | 2,472,804 | 794,512 | 3,267,316 | 75.7% |
| August | 2,448,470 | 765,833 | 3,214,303 | 76.2 |
| September | 2,421,271 | 758,497 | 3,179,768 | 76.1 |
| October | 2,627,163 | 831,035 | 3,458,198 | 76.0 |
| November | 2,577,181 | 828,022 | 3,405,203 | 75.7 |
| December | 2,708,185 | 901,083 | 3,609,268 | 75.0 |
| January 2022 | 2,508,405 | 819,881 | 3,328,286 | 75.4 |
| February* | 2,527,275 | 809,529 | 3,336,804 | 75.7 |
| March | 3,237,357 | 1,082,990 | 4,320,347 | 74.9 |
| April | 3,226,645 | 1,128,448 | 4,355,093 | 74.1 |
| May | 3,183,099 | 1,146,224 | 4,329,323 | 73.5 |
| June | 2,965,119 | 1,110,960 | 4,076,079 | 72.7 |
| Total | 32,902,974 | 10,977,014 | 43,879,988 | 75.0% |

Source: Turnpike Enterprise Finance Office.

* The 13-mile extension of Suncoast Parkway between US 98 in Hernando County and SR 44 in Citrus County opened to traffic on February 28, 2022.

**Table 6.23 - Suncoast Parkway
Quarterly SunPass Revenue Results
FY 2022 vs. FY 2021**

| Months | FY 2022 | FY 2021 | Variance | |
|----------------------|---------------------|---------------------|--------------------|--------------|
| | | | Amount | Change |
| July | \$2,056,609 | \$1,619,577 | \$437,032 | 27.0% |
| August | 2,009,197 | 1,661,250 | 347,947 | 20.9 |
| September | 1,979,513 | 1,669,035 | 310,478 | 18.6 |
| 1st Quarter Subtotal | 6,045,319 | 4,949,862 | 1,095,457 | 22.1 |
| October | 2,150,105 | 1,797,061 | 353,044 | 19.6 |
| November | 2,124,579 | 1,696,787 | 427,792 | 25.2 |
| December | 2,223,552 | 1,825,444 | 398,108 | 21.8 |
| 2nd Quarter Subtotal | 6,498,236 | 5,319,292 | 1,178,944 | 22.2 |
| January | 2,073,844 | 1,763,444 | 310,400 | 17.6 |
| February* | 2,086,095 | 1,714,779 | 371,316 | 21.7 |
| March | 2,804,270 | 2,038,541 | 765,729 | 37.6 |
| 3rd Quarter Subtotal | 6,964,209 | 5,516,764 | 1,447,445 | 26.2 |
| April | 2,814,005 | 2,006,719 | 807,286 | 40.2 |
| May | 2,781,047 | 2,073,374 | 707,673 | 34.1 |
| June | 2,612,292 | 2,083,794 | 528,498 | 25.4 |
| 4th Quarter Subtotal | 8,207,344 | 6,163,887 | 2,043,457 | 33.2 |
| Annual Total | \$27,715,108 | \$21,949,805 | \$5,765,303 | 26.3% |

Source: Turnpike Enterprise Finance Office.

* The 13-mile extension of Suncoast Parkway between US 98 in Hernando County and SR 44 in Citrus County opened to traffic on February 28, 2022.

**Table 6.24 - Western Beltway, Part C
SunPass Transactions and Participation
FY 2022**

| Month | Number of Transactions | | | SunPass Participation |
|--------------|------------------------|------------------|-------------------|-----------------------|
| | SunPass | Non-SunPass | Total | |
| July 2021 | 1,300,438 | 483,300 | 1,783,738 | 72.9% |
| August | 1,156,970 | 346,577 | 1,503,547 | 76.9 |
| September | 1,068,461 | 299,192 | 1,367,653 | 78.1 |
| October | 1,197,879 | 347,631 | 1,545,510 | 77.5 |
| November | 1,204,534 | 370,494 | 1,575,028 | 76.5 |
| December | 1,281,115 | 404,312 | 1,685,427 | 76.0 |
| January 2022 | 1,146,492 | 328,668 | 1,475,160 | 77.7 |
| February | 1,218,241 | 353,913 | 1,572,154 | 77.5 |
| March | 1,370,986 | 424,002 | 1,794,988 | 76.4 |
| April | 1,345,088 | 417,700 | 1,762,788 | 76.3 |
| May | 1,262,811 | 394,935 | 1,657,746 | 76.2 |
| June | 1,227,436 | 424,569 | 1,652,005 | 74.3 |
| Total | 14,780,451 | 4,595,293 | 19,375,744 | 76.3% |

Source: Turnpike Enterprise Finance Office.

**Table 6.25 - Western Beltway, Part C
Quarterly SunPass Revenue Results
FY 2022 vs. FY 2021**

| Months | FY 2022 | FY 2021 | Variance | |
|----------------------|---------------------|---------------------|--------------------|--------------|
| | | | Amount | Change |
| July | \$1,354,003 | \$894,530 | \$459,473 | 51.4% |
| August | 1,224,076 | 917,548 | 306,528 | 33.4 |
| September | 1,141,291 | 921,847 | 219,444 | 23.8 |
| 1st Quarter Subtotal | 3,719,370 | 2,733,925 | 985,445 | 36.0 |
| October | 1,270,577 | 992,559 | 278,018 | 28.0 |
| November | 1,275,745 | 937,176 | 338,569 | 36.1 |
| December | 1,344,525 | 1,008,236 | 336,289 | 33.4 |
| 2nd Quarter Subtotal | 3,890,847 | 2,937,971 | 952,876 | 32.4 |
| January | 1,211,063 | 973,992 | 237,071 | 24.3 |
| February | 1,280,960 | 947,113 | 333,847 | 35.2 |
| March | 1,438,264 | 1,125,934 | 312,330 | 27.7 |
| 3rd Quarter Subtotal | 3,930,287 | 3,047,039 | 883,248 | 29.0 |
| April | 1,396,007 | 1,108,358 | 287,649 | 26.0 |
| May | 1,316,701 | 1,145,174 | 171,527 | 15.0 |
| June | 1,282,498 | 1,150,929 | 131,569 | 11.4 |
| 4th Quarter Subtotal | 3,995,206 | 3,404,461 | 590,745 | 17.4 |
| Annual Total | \$15,535,710 | \$12,123,396 | \$3,412,314 | 28.1% |

Source: Turnpike Enterprise Finance Office.

**Table 6.26 - I-4 Connector
SunPass Transactions and Participation
FY 2022**

| Month | Number of Transactions | | | SunPass Participation |
|--------------|------------------------|------------------|-------------------|-----------------------|
| | SunPass | Non-SunPass | Total | |
| July 2021 | 1,230,309 | 480,468 | 1,710,777 | 71.9% |
| August | 1,236,374 | 477,528 | 1,713,902 | 72.1 |
| September | 1,207,549 | 472,125 | 1,679,674 | 71.9 |
| October | 1,307,846 | 520,045 | 1,827,891 | 71.5 |
| November | 1,252,077 | 491,927 | 1,744,004 | 71.8 |
| December | 1,307,228 | 504,519 | 1,811,747 | 72.2 |
| January 2022 | 1,251,232 | 478,143 | 1,729,375 | 72.4 |
| February | 1,231,452 | 462,752 | 1,694,204 | 72.7 |
| March | 1,383,185 | 521,843 | 1,905,028 | 72.6 |
| April | 1,345,478 | 517,362 | 1,862,840 | 72.2 |
| May | 1,336,466 | 549,939 | 1,886,405 | 70.8 |
| June | 1,248,810 | 536,337 | 1,785,147 | 70.0 |
| Total | 15,338,006 | 6,012,988 | 21,350,994 | 71.8% |

Source: Turnpike Enterprise Finance Office.

**Table 6.27 - I-4 Connector
Quarterly SunPass Revenue Results
FY 2022 vs. FY 2021**

| Months | FY 2022 | FY 2021 | Variance | |
|----------------------|---------------------|--------------------|--------------------|--------------|
| | | | Amount | Change |
| July | \$889,671 | \$719,127 | \$170,544 | 23.7% |
| August | 890,579 | 737,631 | 152,948 | 20.7 |
| September | 875,240 | 741,088 | 134,152 | 18.1 |
| 1st Quarter Subtotal | 2,655,490 | 2,197,846 | 457,644 | 20.8 |
| October | 948,250 | 797,934 | 150,316 | 18.8 |
| November | 914,141 | 753,410 | 160,731 | 21.3 |
| December | 946,535 | 810,537 | 135,998 | 16.8 |
| 2nd Quarter Subtotal | 2,808,926 | 2,361,881 | 447,045 | 18.9 |
| January | 909,082 | 783,008 | 126,074 | 16.1 |
| February | 906,504 | 761,399 | 145,105 | 19.1 |
| March | 1,020,395 | 905,156 | 115,239 | 12.7 |
| 3rd Quarter Subtotal | 2,835,981 | 2,449,563 | 386,418 | 15.8 |
| April | 989,982 | 891,027 | 98,955 | 11.1 |
| May | 987,211 | 920,624 | 66,587 | 7.2 |
| June | 926,582 | 925,251 | 1,331 | 0.1 |
| 4th Quarter Subtotal | 2,903,775 | 2,736,902 | 166,873 | 6.1 |
| Annual Total | \$11,204,172 | \$9,746,192 | \$1,457,980 | 15.0% |

Source: Turnpike Enterprise Finance Office.

**Table 6.28 - Beachline East Expressway
SunPass Transactions and Participation
FY 2022**

| Month | Number of Transactions | | | SunPass Participation |
|--------------|------------------------|------------------|-------------------|-----------------------|
| | SunPass | Non-SunPass | Total | |
| July 2021 | 1,385,799 | 490,567 | 1,876,366 | 73.9% |
| August | 1,294,703 | 412,257 | 1,706,960 | 75.8 |
| September | 1,219,551 | 397,768 | 1,617,319 | 75.4 |
| October | 1,391,388 | 436,704 | 1,828,092 | 76.1 |
| November | 1,301,131 | 423,486 | 1,724,617 | 75.4 |
| December | 1,389,940 | 461,229 | 1,851,169 | 75.1 |
| January 2022 | 1,271,802 | 386,320 | 1,658,122 | 76.7 |
| February | 1,320,071 | 416,525 | 1,736,596 | 76.0 |
| March | 1,486,772 | 529,694 | 2,016,466 | 73.7 |
| April | 1,476,802 | 482,504 | 1,959,306 | 75.4 |
| May | 1,470,060 | 501,335 | 1,971,395 | 74.6 |
| June | 1,380,147 | 475,864 | 1,856,011 | 74.4 |
| Total | 16,388,166 | 5,414,253 | 21,802,419 | 75.2% |

Source: Turnpike Enterprise Finance Office.

**Table 6.29 - Beachline East Expressway
Quarterly SunPass Revenue Results
FY 2022 vs. FY 2021**

| Months | FY 2022 | FY 2021 | Variance | |
|----------------------|--------------------|--------------------|------------------|--------------|
| | | | Amount | Change |
| July | \$359,847 | \$257,525 | \$102,322 | 39.7% |
| August | 336,201 | 264,151 | 72,050 | 27.3 |
| September | 316,620 | 265,389 | 51,231 | 19.3 |
| 1st Quarter Subtotal | 1,012,668 | 787,065 | 225,603 | 28.7 |
| October | 361,281 | 285,746 | 75,535 | 26.4 |
| November | 337,902 | 269,802 | 68,100 | 25.2 |
| December | 361,029 | 290,259 | 70,770 | 24.4 |
| 2nd Quarter Subtotal | 1,060,212 | 845,807 | 214,405 | 25.3 |
| January | 330,305 | 280,401 | 49,904 | 17.8 |
| February | 342,881 | 272,663 | 70,218 | 25.8 |
| March | 386,221 | 324,143 | 62,078 | 19.2 |
| 3rd Quarter Subtotal | 1,059,407 | 877,207 | 182,200 | 20.8 |
| April | 383,571 | 319,083 | 64,488 | 20.2 |
| May | 381,833 | 329,682 | 52,151 | 15.8 |
| June | 358,596 | 331,338 | 27,258 | 8.2 |
| 4th Quarter Subtotal | 1,124,000 | 980,103 | 143,897 | 14.7 |
| Annual Total | \$4,256,287 | \$3,490,182 | \$766,105 | 22.0% |

Source: Turnpike Enterprise Finance Office.

**Table 6.30 - First Coast Expressway
SunPass Transactions and Participation
FY 2022**

| Month | Number of Transactions | | | SunPass Participation |
|--------------|------------------------|-------------------|-------------------|-----------------------|
| | SunPass | Non-SunPass | Total | |
| July 2021 | 1,740,238 | 856,512 | 2,596,750 | 67.0% |
| August | 1,811,395 | 859,682 | 2,671,077 | 67.8 |
| September | 1,811,955 | 870,034 | 2,681,989 | 67.6 |
| October | 1,908,958 | 944,760 | 2,853,718 | 66.9 |
| November | 1,835,649 | 931,252 | 2,766,901 | 66.3 |
| December | 1,921,128 | 1,013,524 | 2,934,652 | 65.5 |
| January 2022 | 1,748,750 | 892,497 | 2,641,247 | 66.2 |
| February | 1,752,358 | 876,473 | 2,628,831 | 66.7 |
| March | 1,936,494 | 984,936 | 2,921,430 | 66.3 |
| April | 1,920,971 | 1,003,361 | 2,924,332 | 65.7 |
| May | 1,931,988 | 1,032,789 | 2,964,777 | 65.2 |
| June | 1,756,308 | 951,572 | 2,707,880 | 64.9 |
| Total | 22,076,192 | 11,217,392 | 33,293,584 | 66.3% |

Source: Turnpike Enterprise Finance Office.

**Table 6.31 - First Coast Expressway
Quarterly SunPass Revenue Results
FY 2022 vs. FY 2021**

| Months | FY 2022 | FY 2021 | Variance | |
|----------------------|---------------------|--------------------|--------------------|--------------|
| | | | Amount | Change |
| July | \$846,037 | \$694,651 | \$151,386 | 21.8% |
| August | 880,807 | 712,526 | 168,281 | 23.6 |
| September | 880,274 | 715,864 | 164,410 | 23.0 |
| 1st Quarter Subtotal | 2,607,118 | 2,123,041 | 484,077 | 22.8 |
| October | 921,792 | 770,776 | 151,016 | 19.6 |
| November | 888,032 | 727,768 | 160,264 | 22.0 |
| December | 931,809 | 782,950 | 148,859 | 19.0 |
| 2nd Quarter Subtotal | 2,741,633 | 2,281,494 | 460,139 | 20.2 |
| January | 844,376 | 756,358 | 88,018 | 11.6 |
| February | 845,386 | 735,485 | 109,901 | 14.9 |
| March | 936,050 | 874,349 | 61,701 | 7.1 |
| 3rd Quarter Subtotal | 2,625,812 | 2,366,192 | 259,620 | 11.0 |
| April | 938,335 | 860,700 | 77,635 | 9.0 |
| May | 949,061 | 889,290 | 59,771 | 6.7 |
| June | 868,972 | 893,758 | (24,786) | (2.8) |
| 4th Quarter Subtotal | 2,756,368 | 2,643,748 | 112,620 | 4.3 |
| Annual Total | \$10,730,931 | \$9,414,475 | \$1,316,456 | 14.0% |

Source: Turnpike Enterprise Finance Office.

**Table 6.32 - Mainline Seasonal Variation
SunPass Traffic
FY 2022**

| Month | Seasonal Factor | | | | |
|--------------|-------------------|----------------------------------|------------------------------------|------------------------------------|---------------------------|
| | Mainline - SR 821 | Mainline - SR 91 (MP 0X - MP 88) | Mainline - SR 91 (MP 88 - MP 236)* | Mainline - SR 91 (MP 236 - MP 309) | Beachline West Expressway |
| July 2021 | 0.97 | 0.98 | 0.89 | 0.96 | 0.93 |
| August | 0.95 | 0.96 | 0.90 | 0.93 | 0.88 |
| September | 0.99 | 0.97 | 0.92 | 0.96 | 0.89 |
| October | 1.02 | 1.00 | 0.96 | 1.00 | 0.97 |
| November | 1.01 | 1.01 | 0.95 | 1.01 | 0.98 |
| December | 0.98 | 0.99 | 0.99 | 1.01 | 1.00 |
| January 2022 | 0.95 | 0.95 | 0.96 | 0.92 | 0.92 |
| February | 1.05 | 1.06 | 1.04 | 1.03 | 1.07 |
| March | 1.06 | 1.09 | 1.10 | 1.07 | 1.12 |
| April | 1.05 | 1.06 | 1.10 | 1.07 | 1.10 |
| May | 1.00 | 0.99 | 1.09 | 1.04 | 1.09 |
| June | 0.96 | 0.95 | 1.10 | 1.02 | 1.03 |

Source: Turnpike Enterprise Finance Office.

* On this section of the Mainline, the change in toll collection from the ramps to the mainlines resulted in significantly higher transactions and impacted the monthly seasonality. Accordingly, FY 2021 seasonality is shown for comparison purposes.

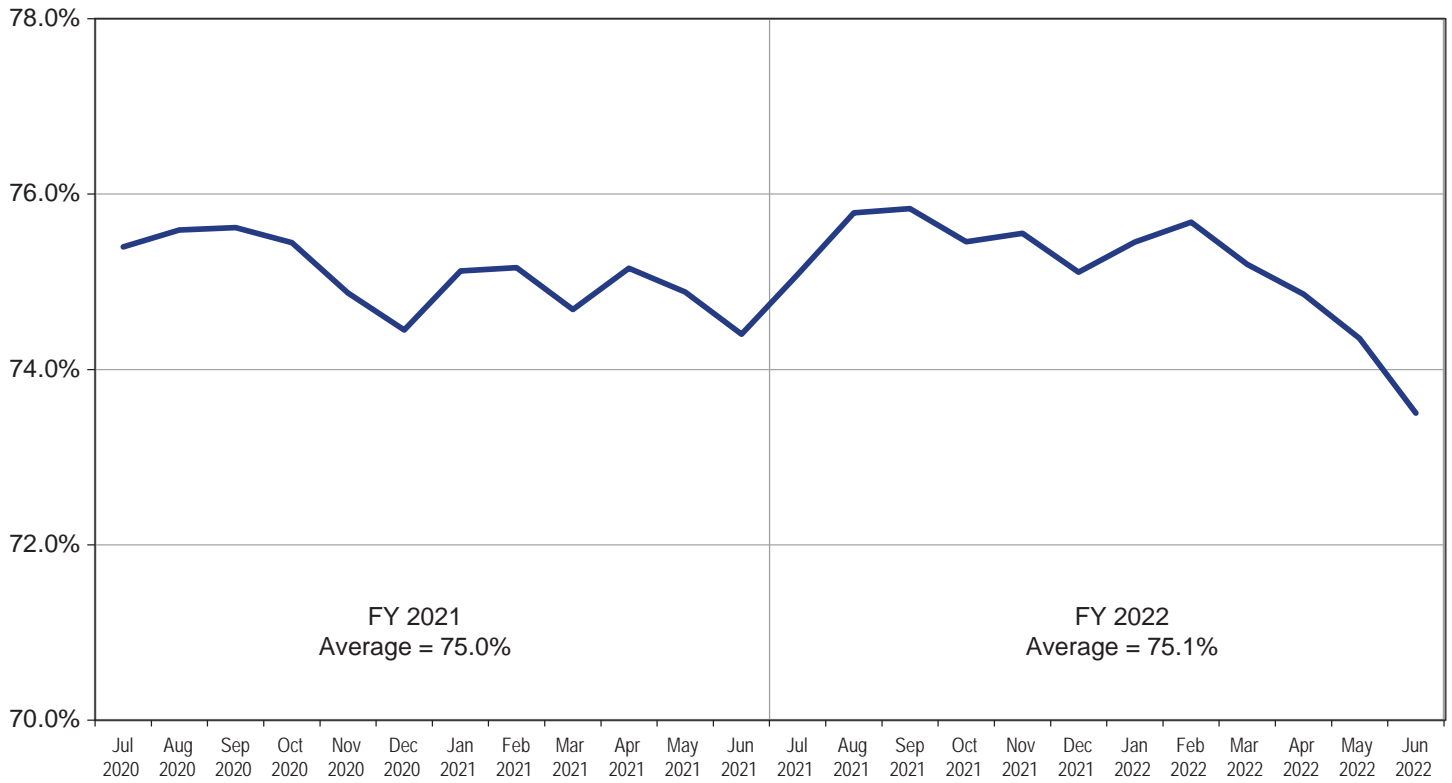
**Table 6.33 - Expansion Projects Seasonal Variation
SunPass Traffic
FY 2022**

| Month | Seasonal Factor | | | | | | | | | |
|--------------|-----------------|---------------|---------------|---------------------|--------------|-------------------|-------------------------|---------------|---------------------|------------------|
| | Sawgrass Expy | Seminole Expy | Veterans Expy | Southern Conn. Ext. | Polk Parkway | Suncoast Parkway* | Western Beltway, Part C | I-4 Connector | Beachline East Expy | First Coast Expy |
| July 2021 | 0.96 | 0.98 | 0.94 | 1.03 | 0.92 | 0.88 | 1.04 | 0.94 | 1.00 | 0.93 |
| August | 0.96 | 0.97 | 0.95 | 0.91 | 0.93 | 0.88 | 0.92 | 0.95 | 0.93 | 0.97 |
| September | 0.98 | 0.99 | 0.96 | 0.88 | 0.97 | 0.90 | 0.88 | 0.96 | 0.91 | 1.00 |
| October | 1.02 | 1.03 | 1.00 | 0.96 | 1.01 | 0.94 | 0.95 | 1.00 | 1.00 | 1.02 |
| November | 1.03 | 1.01 | 1.00 | 0.98 | 0.99 | 0.95 | 0.99 | 0.99 | 0.97 | 1.01 |
| December | 1.01 | 1.01 | 1.02 | 1.02 | 0.99 | 0.97 | 1.02 | 1.00 | 1.00 | 1.02 |
| January 2022 | 0.93 | 0.92 | 0.93 | 0.89 | 0.95 | 0.90 | 0.91 | 0.96 | 0.91 | 0.93 |
| February | 1.05 | 1.05 | 1.04 | 1.04 | 1.07 | 1.00 | 1.07 | 1.05 | 1.05 | 1.03 |
| March | 1.06 | 1.05 | 1.06 | 1.09 | 1.09 | 1.16 | 1.09 | 1.06 | 1.07 | 1.03 |
| April | 1.05 | 1.04 | 1.07 | 1.12 | 1.08 | 1.19 | 1.11 | 1.07 | 1.10 | 1.06 |
| May | 1.01 | 1.00 | 1.04 | 1.04 | 1.02 | 1.14 | 1.01 | 1.03 | 1.06 | 1.03 |
| June | 0.95 | 0.96 | 1.00 | 1.04 | 0.99 | 1.10 | 1.01 | 0.99 | 1.02 | 0.97 |

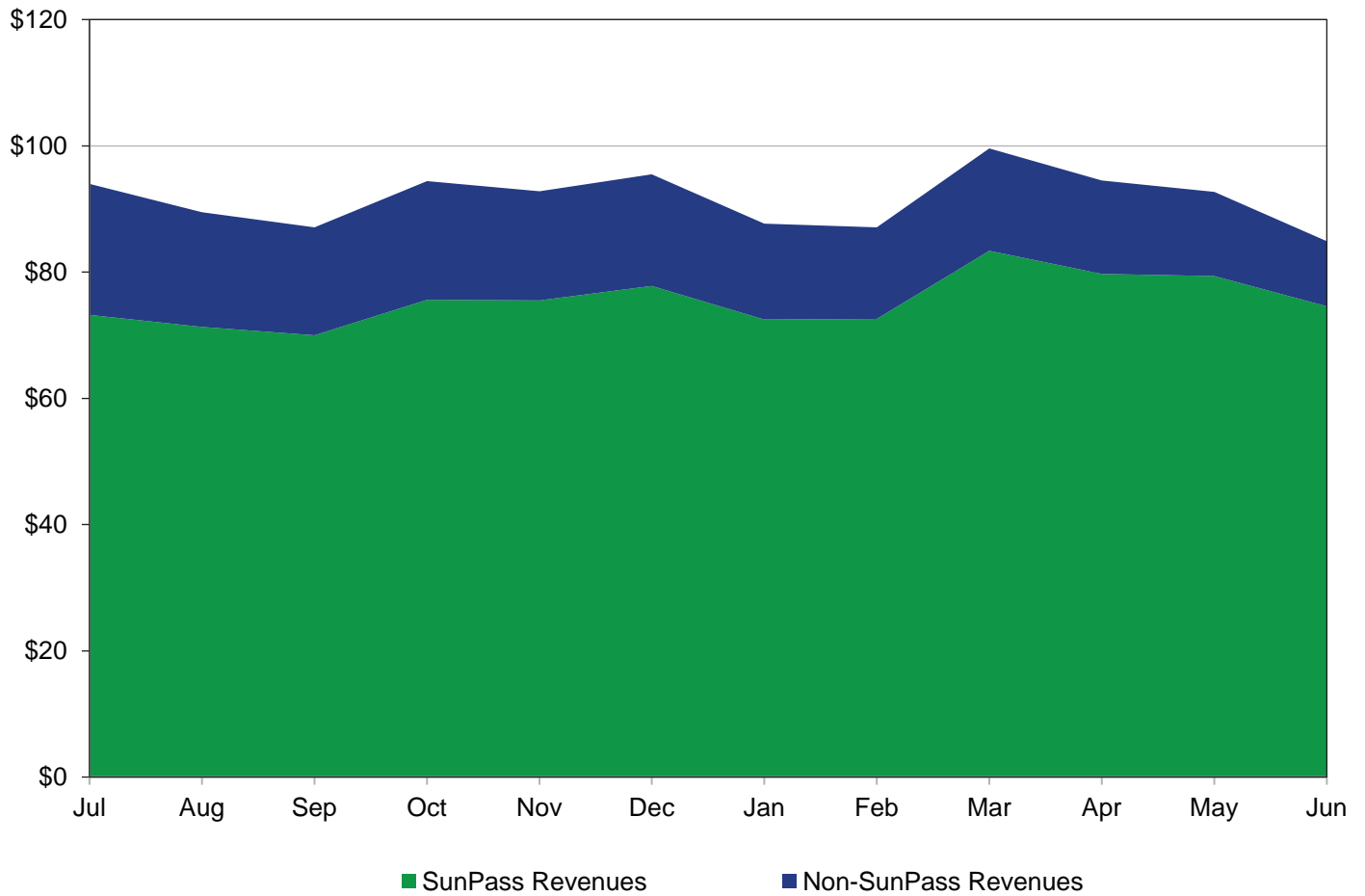
Source: Turnpike Enterprise Finance Office.

* The 13-mile extension of Suncoast Parkway between US 98 in Hernando County and SR 44 in Citrus County opened to traffic on February 28, 2022.

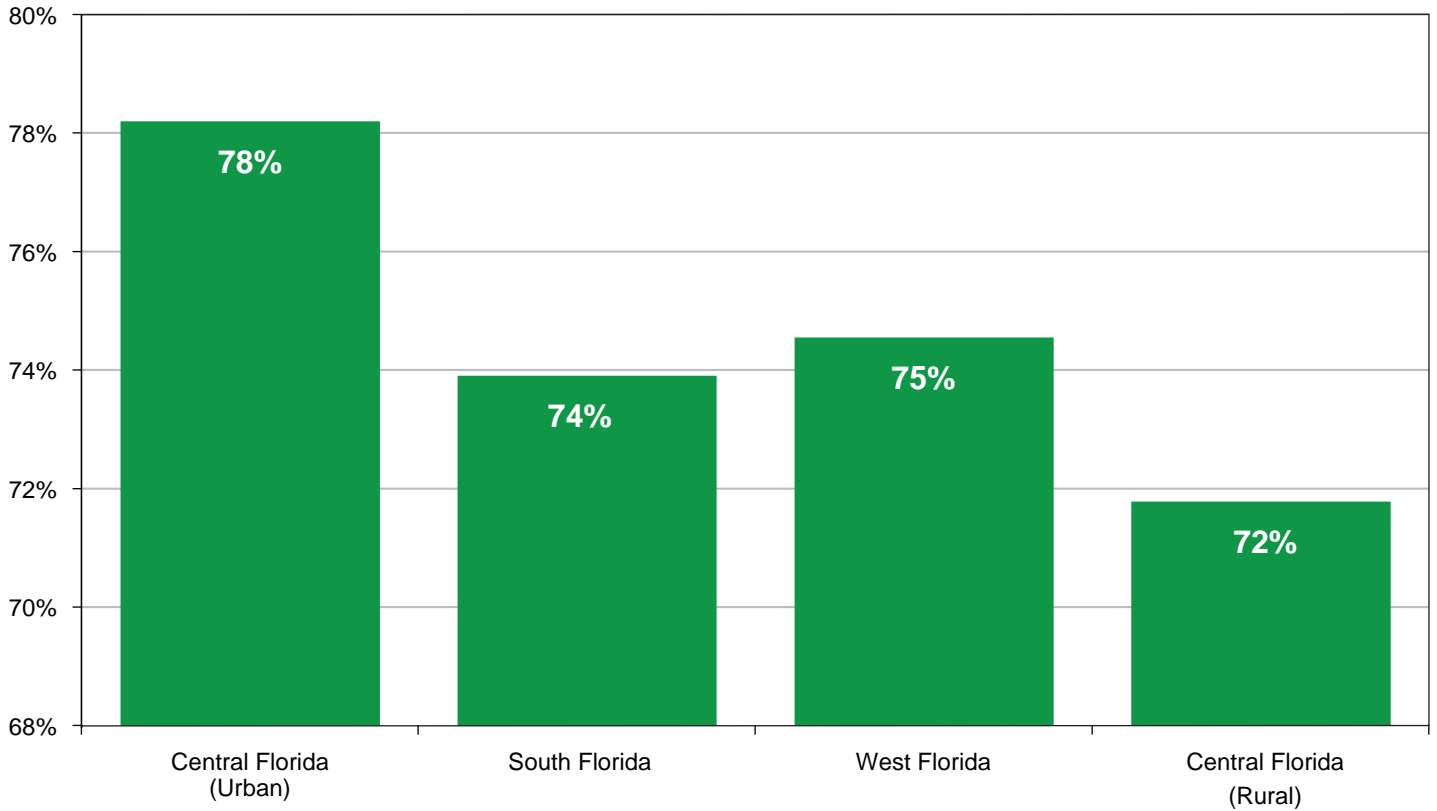
**Graph 6.1 - SunPass Participaton by Month
FY 2021 and FY 2022**



**Graph 6.2 - Toll Revenue by Payment Type
FY 2022
(In Millions)**

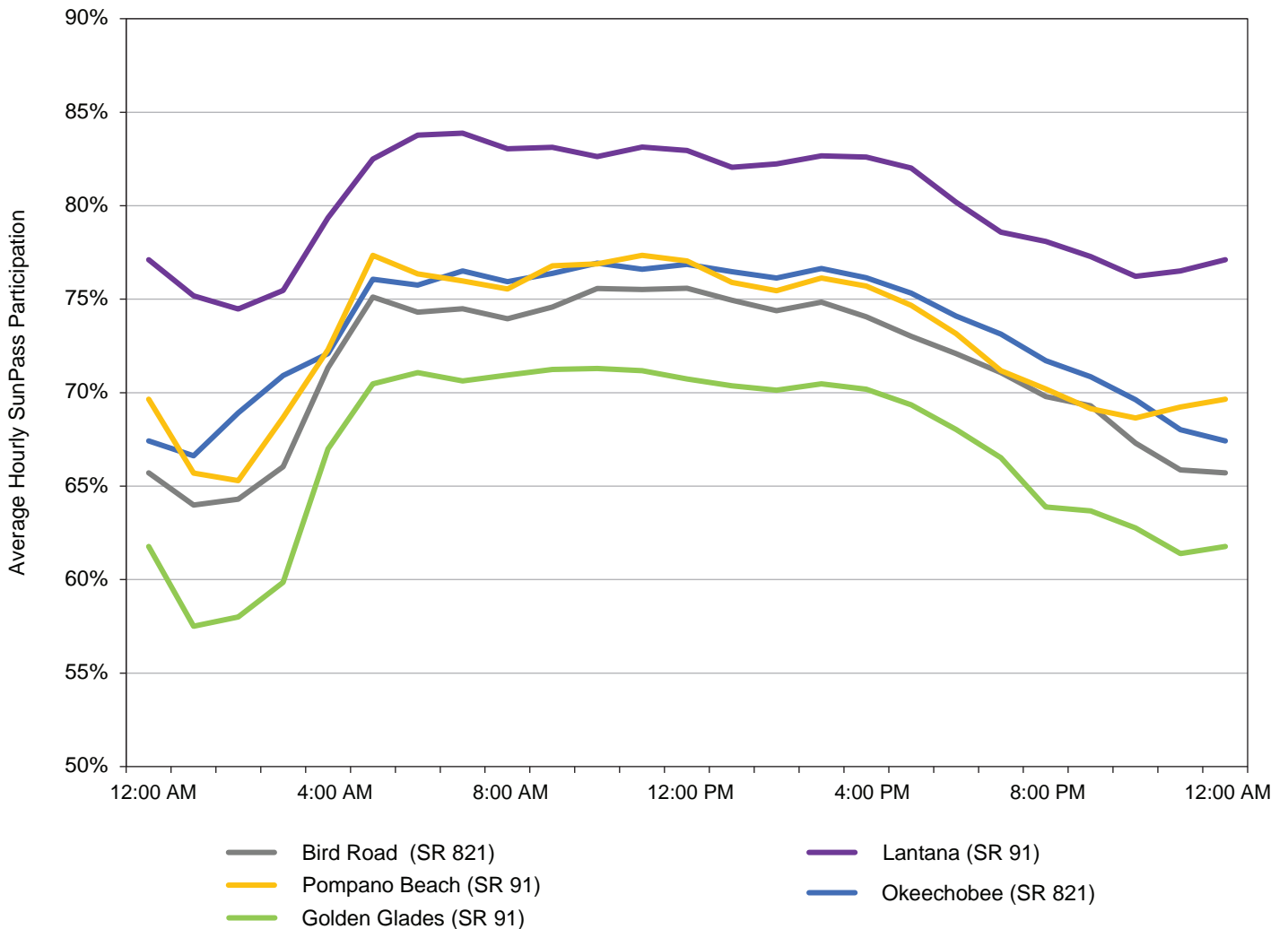


**Graph 6.3 - Turnpike System
SunPass Participation by Region
FY 2022**



This graph depicts the average SunPass participation on the Turnpike System by region during FY 2022. As expected, SunPass participation in the regions with mostly commuters was high (Urban Central Florida at 78 percent, South Florida at 74 percent, and West Florida both at 75 percent). On the other hand, SunPass participation in the tourist-oriented rural regions of Central Florida was the lowest at 72 percent.

**Graph 6.4 - Mainline Toll Plazas - Southern Facilities
Typical Weekday Hourly SunPass Participation**

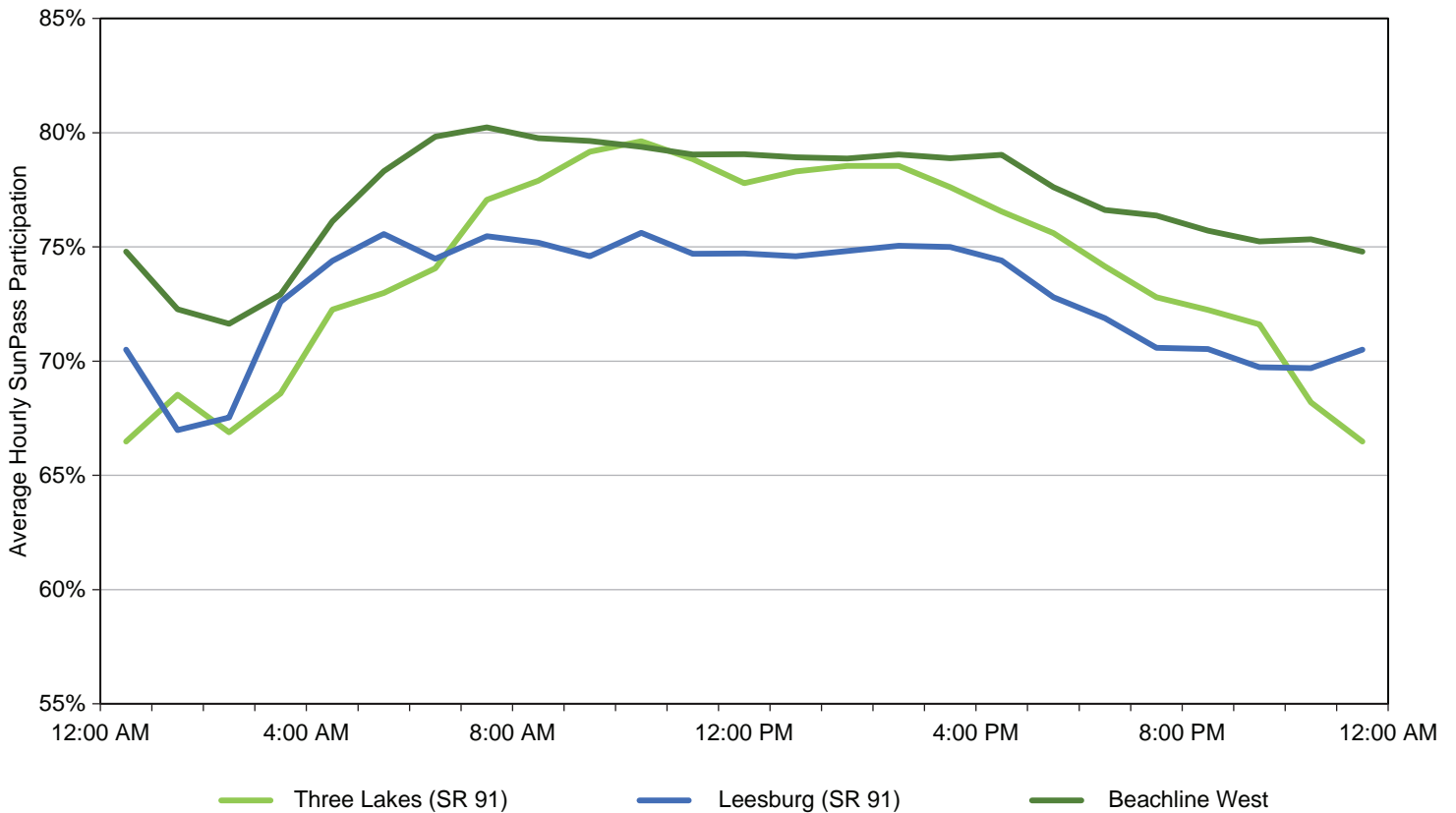


Source: Data obtained from Turnpike Enterprise Finance Office for the week beginning Monday, November 8, 2021.

This graph shows the hourly SunPass participation on weekdays for a typical week at select mainline toll plazas on the southern components of the Mainline System. These components include SR 821, and the southern portion of SR 91.

As depicted in the graph, SunPass participation on these facilities increased during the early morning and evening hours. Peak-hour participation at the Lantana toll plaza reached 84 percent in the morning. In general, the morning peak participation at all five toll plazas was higher than the evening peak participation.

**Graph 6.5 - Mainline Toll Plazas - Northern Facilities
Typical Weekday Hourly SunPass Participation**



Source: Data obtained from Turnpike Enterprise Finance Office for the week beginning Monday, November 8, 2021.

This graph shows the hourly SunPass participation on weekdays for a typical week at select toll plazas on the northern components of the Mainline System. These components include the northern portion of SR 91 and the Beachline West Expressway.

As depicted in the graph, SunPass participation at the Beachline West Expressway peaked at approximately 80 percent during the morning peak hours. SunPass participation remained relatively stable throughout the day at the Leesburg and Three Lakes toll plazas. This pattern confirms the fact that long distance travelers and tourists are the primary users of these toll plazas.