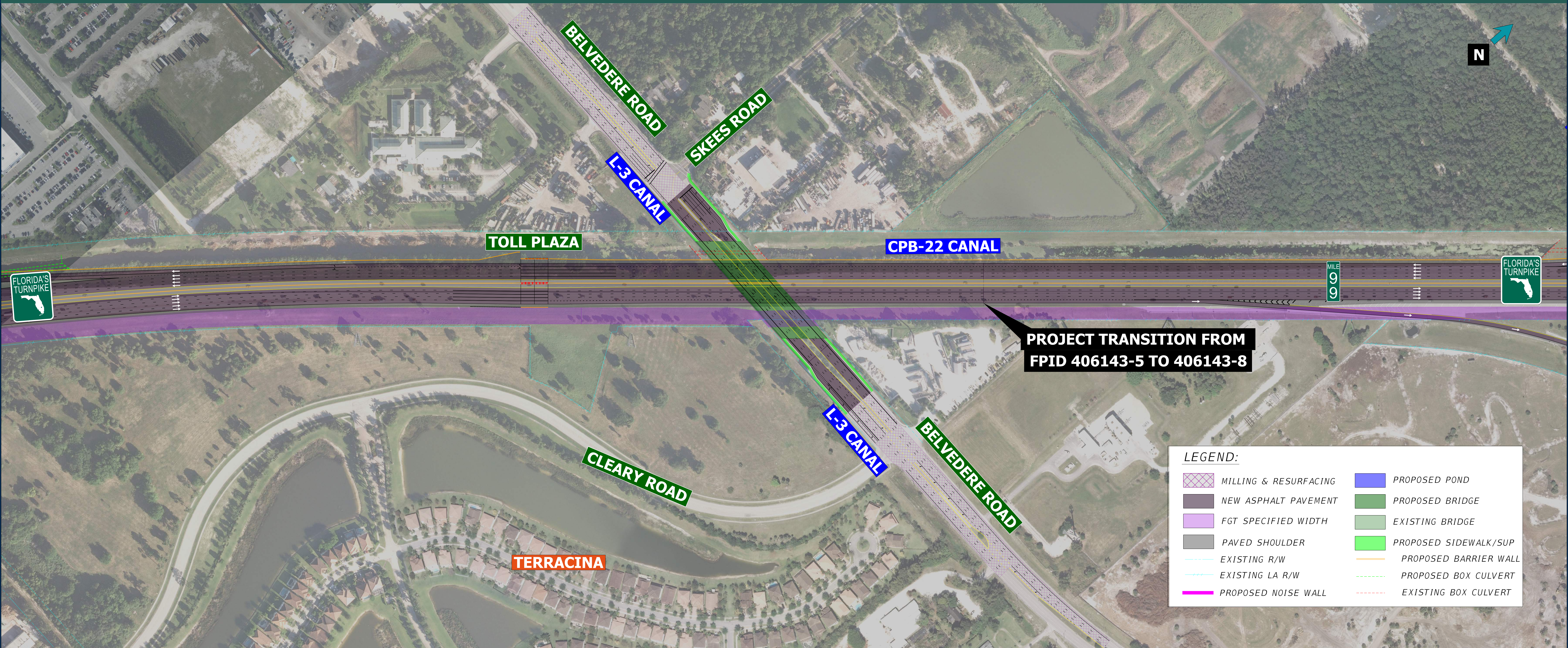


# FLORIDA'S TURNPIKE (SR 91) WIDENING FROM WEST PALM BEACH SERVICE PLAZA TO NORTH OF OKEECHOBEE BLVD (SR 704) PALM BEACH COUNTY, FL



FINANCIAL PROJECT IDENTIFICATION (FPID) NUMBERS: 406143-5 AND 406143-8



**PROJECT TRANSITION FROM  
FPID 406143-5 TO 406143-8**

**LEGEND:**

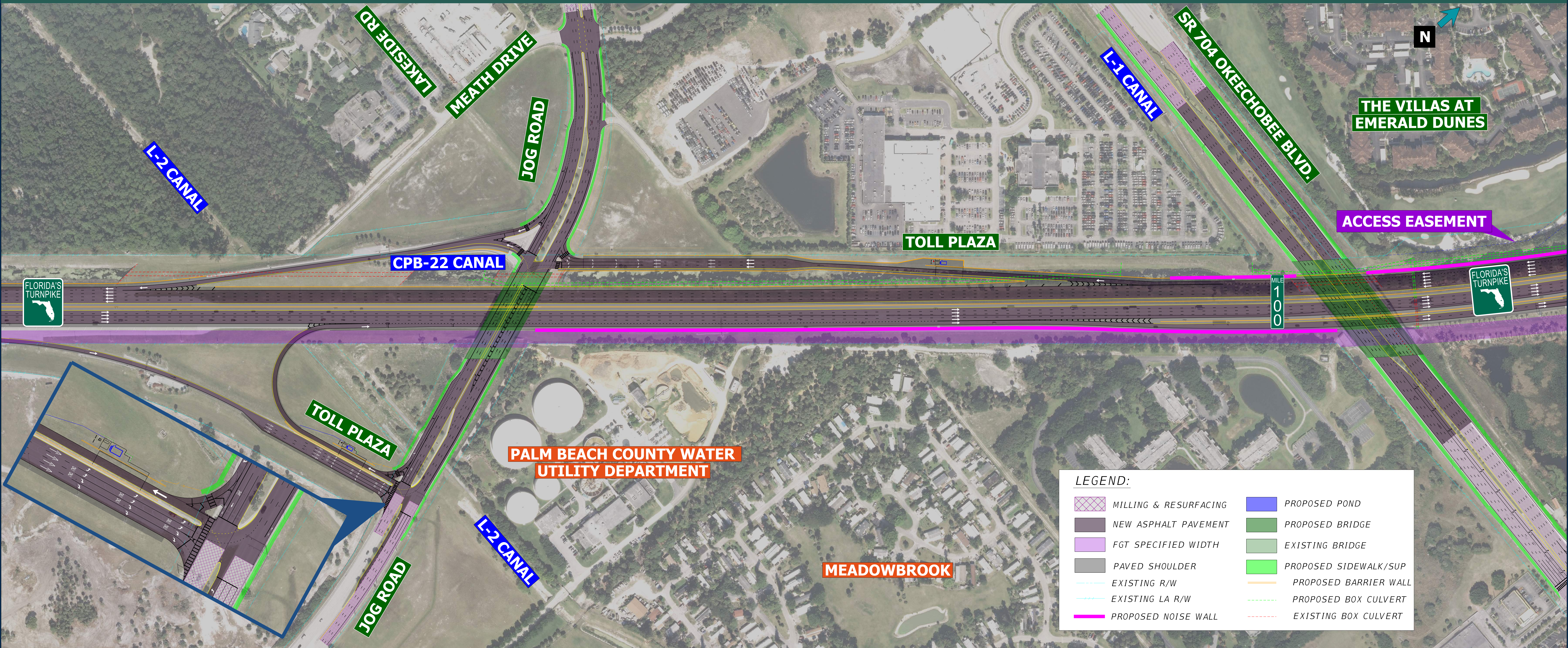
	MILLING & RESURFACING		PROPOSED POND
	NEW ASPHALT PAVEMENT		PROPOSED BRIDGE
	FGT SPECIFIED WIDTH		EXISTING BRIDGE
	PAVED SHOULDER		PROPOSED SIDEWALK/SUP
	EXISTING R/W		PROPOSED BARRIER WALL
	EXISTING LA R/W		PROPOSED BOX CULVERT
	PROPOSED NOISE WALL		EXISTING BOX CULVERT



# FLORIDA'S TURNPIKE (SR 91) WIDENING FROM WEST PALM BEACH SERVICE PLAZA TO NORTH OF OKEECHOBEE BLVD (SR 704) PALM BEACH COUNTY, FL



FINANCIAL PROJECT IDENTIFICATION (FPID) NUMBERS: 406143-5 AND 406143-8



VIRTUAL: FEBRUARY 21, 2023 | IN-PERSON: FEBRUARY 23, 2023

[www.TurnpikeWPBto704.com](http://www.TurnpikeWPBto704.com)

PALM BEACH COUNTY CONVENTION CENTER

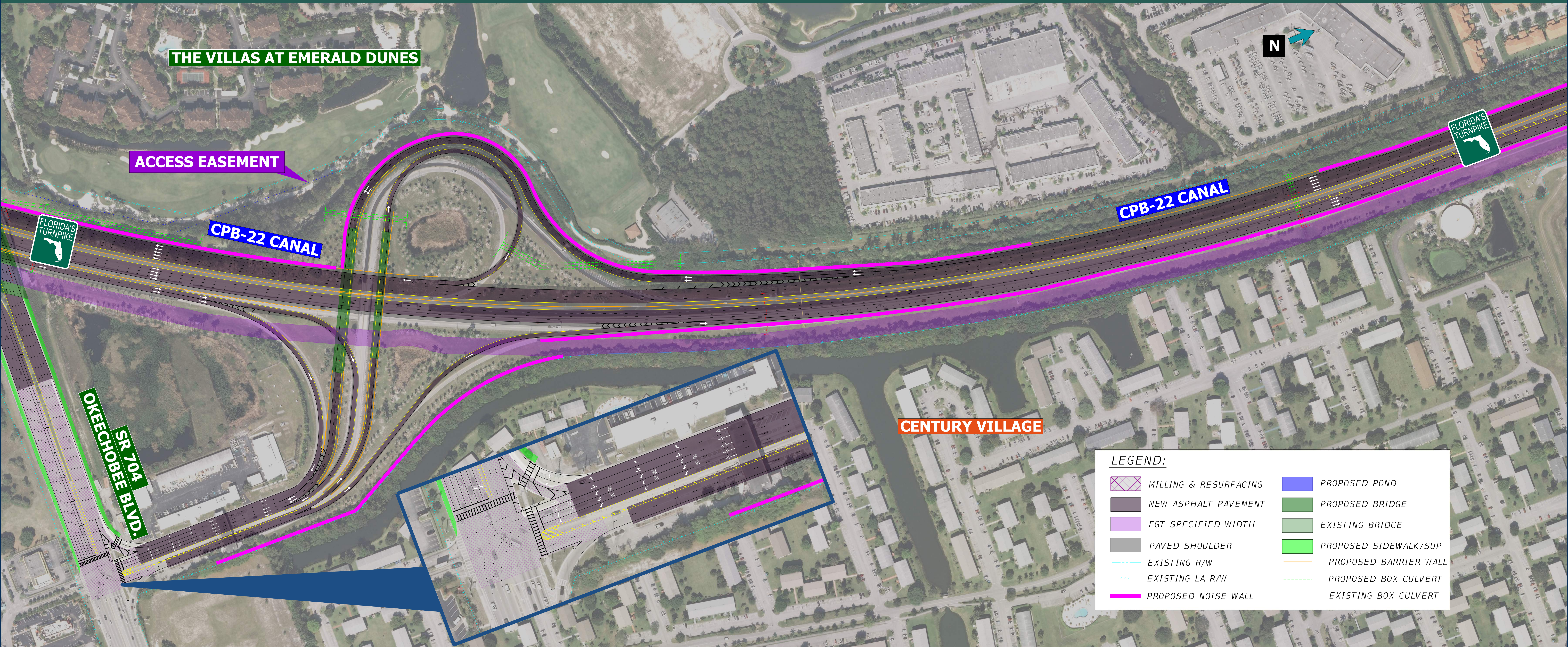
650 OKEECHOBEE BLVD | WEST PALM BEACH, FL 33401



# FLORIDA'S TURNPIKE (SR 91) WIDENING FROM WEST PALM BEACH SERVICE PLAZA TO NORTH OF OKEECHOBEE BLVD (SR 704) PALM BEACH COUNTY, FL



FINANCIAL PROJECT IDENTIFICATION (FPID) NUMBERS: 406143-5 AND 406143-8



VIRTUAL: FEBRUARY 21, 2023 | IN-PERSON: FEBRUARY 23, 2023

[www.TurnpikeWPBto704.com](http://www.TurnpikeWPBto704.com)

PALM BEACH COUNTY CONVENTION CENTER

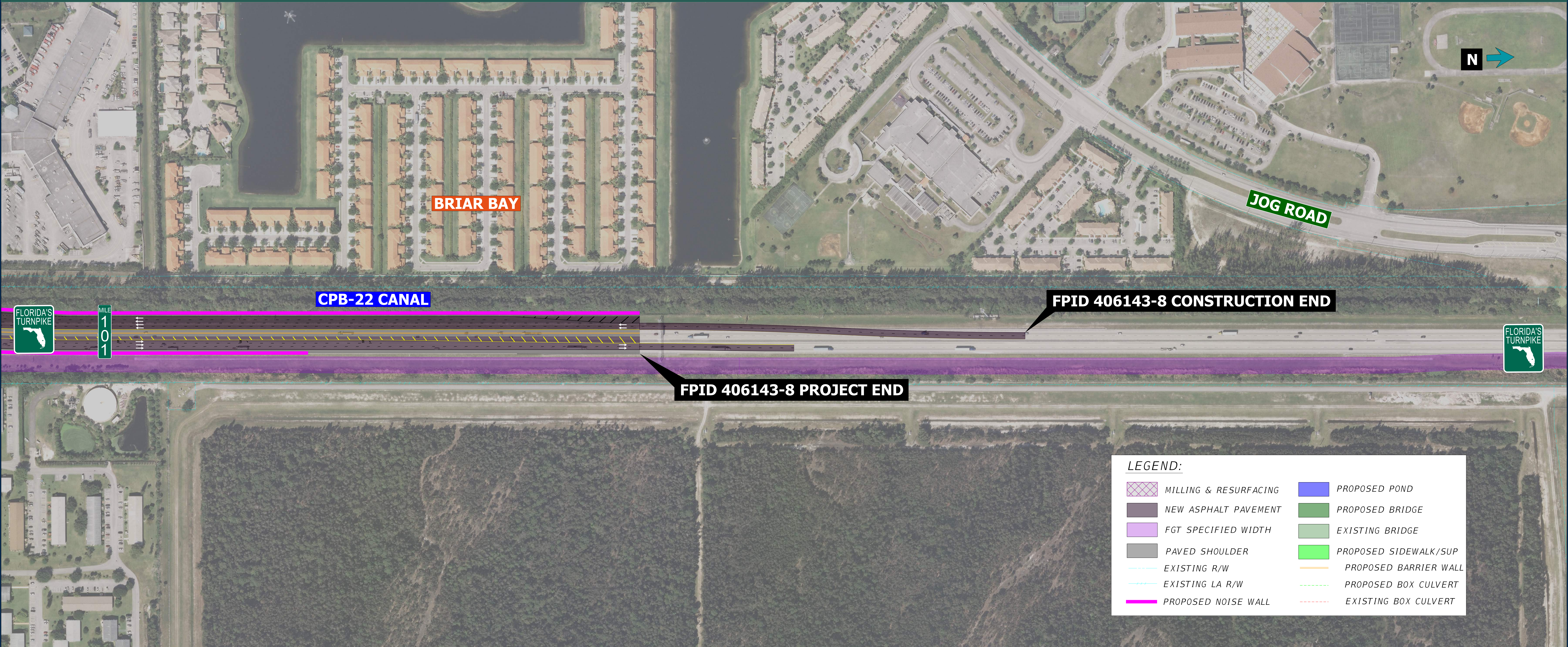
650 OKEECHOBEE BLVD | WEST PALM BEACH, FL 33401



# FLORIDA'S TURNPIKE (SR 91) WIDENING FROM WEST PALM BEACH SERVICE PLAZA TO NORTH OF OKEECHOBEE BLVD (SR 704) PALM BEACH COUNTY, FL



FINANCIAL PROJECT IDENTIFICATION (FPID) NUMBERS: 406143-5 AND 406143-8



VIRTUAL: FEBRUARY 21, 2023 | IN-PERSON: FEBRUARY 23, 2023

[www.TurnpikeWPBto704.com](http://www.TurnpikeWPBto704.com)

PALM BEACH COUNTY CONVENTION CENTER

650 OKEECHOBEE BLVD | WEST PALM BEACH, FL 33401