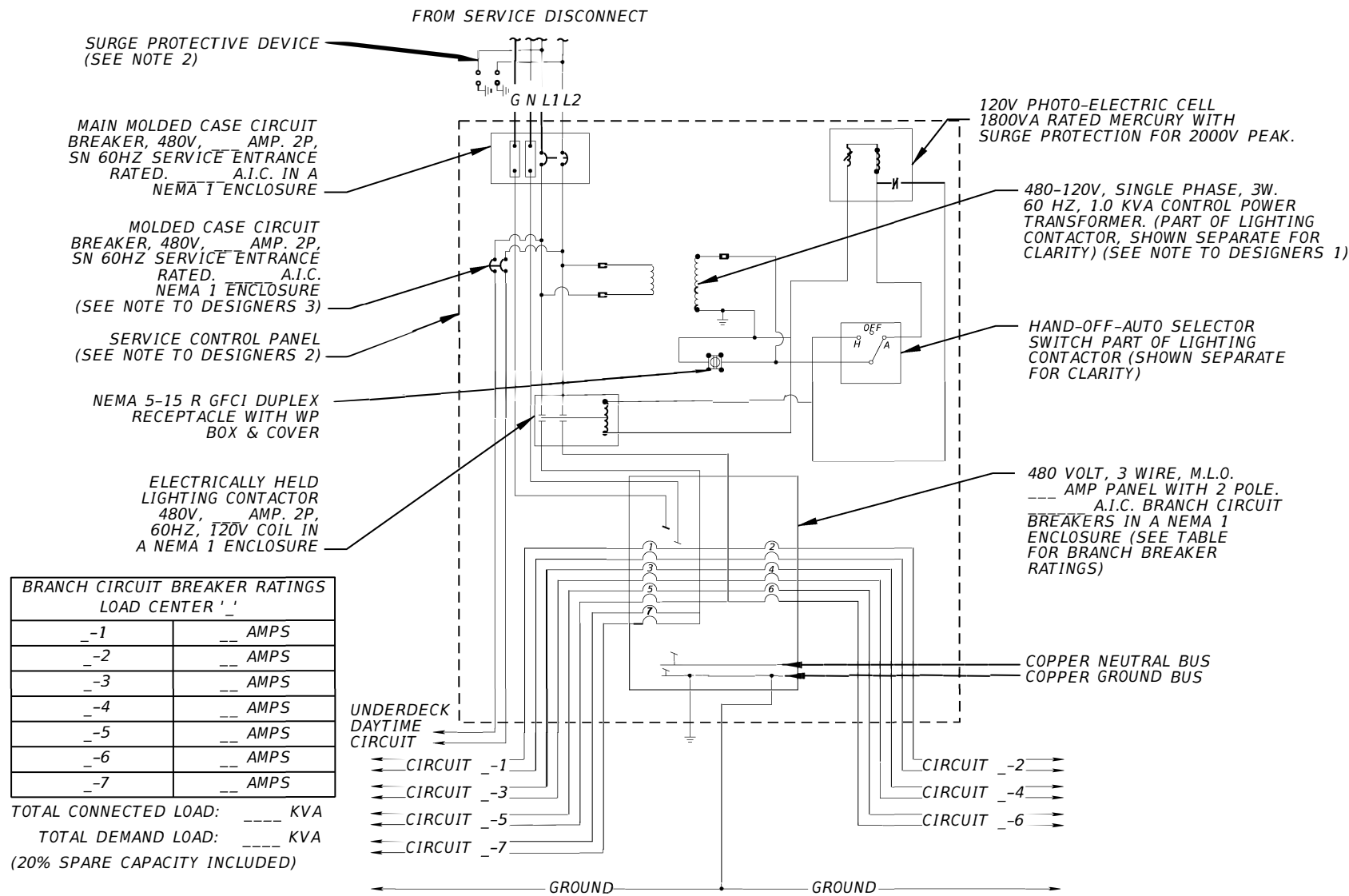


**NOTE TO DESIGNERS (NOT TO BE SHOWN ON PROJECT PLANS):**

- CONTROL POWER TRANSFORMER FUSE RATING TO BE SHOWN ON THE LOAD CENTER SCHEMATIC DIAGRAM. FUSED PER NEC.
- LOAD CENTER/SERVICE POINTS SHALL BE PROVIDED WITH A MINIMUM OF 20% SPARE CAPACITY.
- BREAKER AND WIRING INSTALLED WHEN DAYTIME LIGHTING CIRCUIT IS REQUIRED.
- CABINET SHALL BE GROUNDED PER NEC AND FDOT STANDARDS. SHOW GROUNDING DETAILS ON LOAD CENTER DETAILS SHEETS.

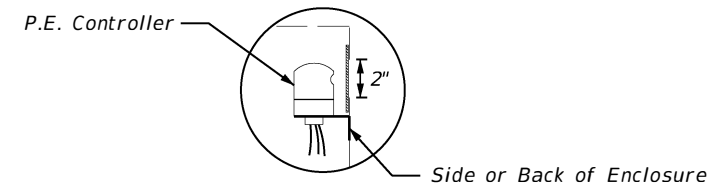


**LOAD CENTER SCHEMATIC DIAGRAM**

N.T.S.

**NOTES:**

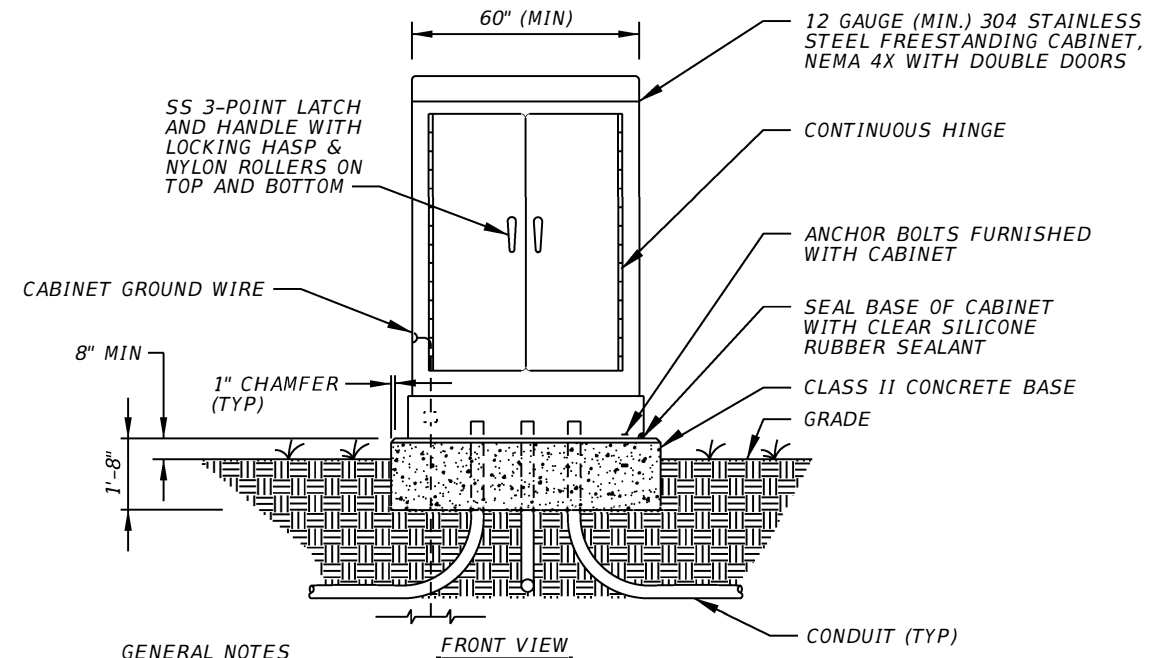
- CONTRACTOR SHALL FURNISH ENCLOSURE SIZED FOR THE EQUIPMENT (SEE ENCLOSURE DETAIL THIS SHEET).
- SURGE PROTECTIVE DEVICE (SPD): SPD UNIT SHALL BE WIRED INSIDE THE ENCLOSURE. SPD UNIT SHALL BE MOUNTED ON THE OUTSIDE OF THE ENCLOSURE.
- SHOP DRAWINGS REQUIRED FOR ALL EQUIPMENT ASSOCIATED WITH THE LOAD CENTER.



**PHOTO ELECTRIC CONTROLLER DETAIL**

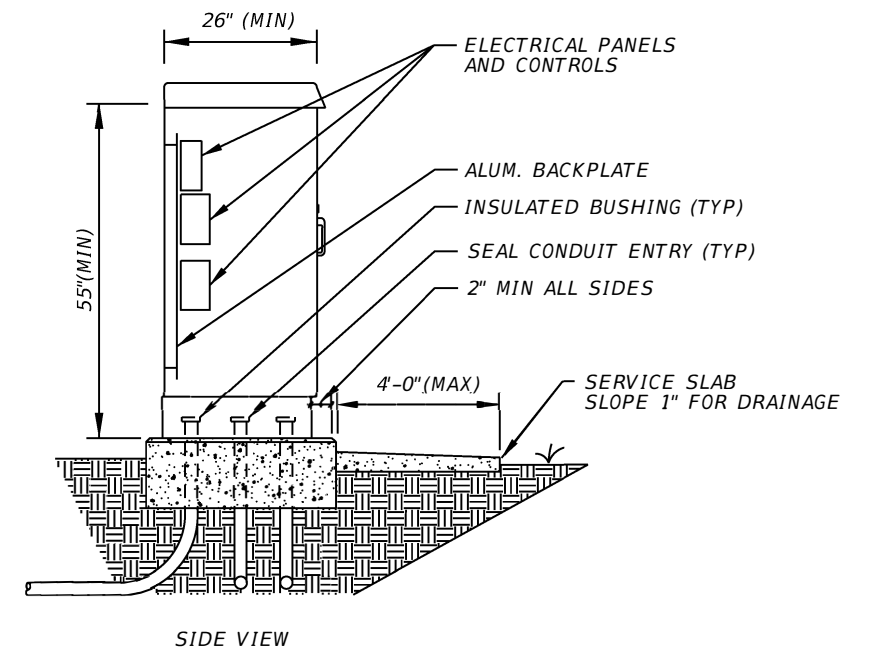
N.T.S.

CUT A 2" HOLE IN THE SIDE OF THE LIGHTING CONTROL PANEL ENCLOSURE FOR THE OPERATION AND MOUNTING OF THE P.E. CONTROLLER. USE PLEXIGLASS AND A CLEAR SILICONE SEALANT TO COVER HOLE, INSTALL P.E. CONTROLLER.



**GENERAL NOTES**

- STUB-OUT ONE (1) SPARE 2" PVC CONDUIT BELOW GRADE AND BEYOND CONCRETE BASE. CAP ENDS AND INDICATE LOCATION OF STUB-OUT INSIDE CABINET



**LOAD CENTER ENCLOSURE DETAIL**

N.T.S.

REVISIONS				STATE OF FLORIDA DEPARTMENT OF TRANSPORTATION			LOAD CENTER DETAILS
DATE	DESCRIPTION	DATE	DESCRIPTION	ROAD NO.	COUNTY	FINANCIAL PROJECT ID	